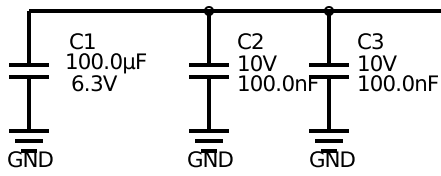


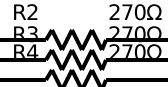
100uF can be placed further away from module.



Only populate 0Ω resistor on VBAT\_RESET if RESET\_N cannot be driven in all operational cases.

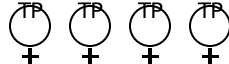
3V3

See datasheet for resistor configuration



For Debugging

TP1 TP2 TP3 TP4



JTAG\_TCK  
JTAG\_TDI  
JTAG\_TDO  
JTAG\_TMS

For External Programming

SPI\_CLK  
SPI\_MISO  
SPI\_MOSI  
SPI\_CS\_N

GPIO0  
GPIO1  
GPIO2  
GPIO3  
GPIO4  
GPIO5  
GPIO6  
GPIO7  
GPIO8  
GPIO9  
GPIO10  
GPIO11  
GPIO12  
GPIO13  
GPIO14  
GPIO15  
GPIO16  
GPIO17  
GPIO22  
GPIO28  
GPIO30

U1  
VBAT1  
VBAT2  
!RESET  
VBAT\_RESET

SOP0  
SOP1  
SOP2

ANT\_SEL1  
ANT\_SEL2

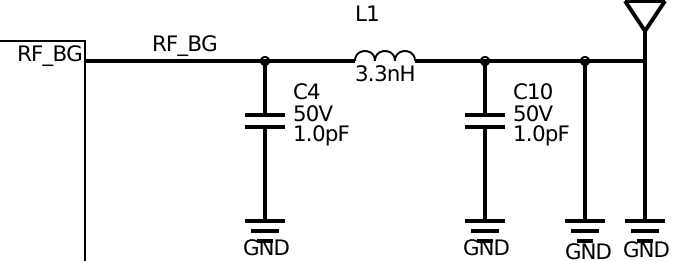
JTAG\_TCK  
JTAG\_TDI  
JTAG\_TDO  
JTAG\_TMS

FLASH\_SPI\_CLK  
FLASH\_SPI\_MISO  
FLASH\_SPI\_MOSI  
!FLASH\_SPT\_CS\_IN

GPIO0  
GPIO1  
GPIO2  
GPIO3  
GPIO4  
GPIO5  
GPIO6  
GPIO7  
GPIO8  
GPIO9  
GPIO10  
GPIO11  
GPIO12  
GPIO13  
GPIO14  
GPIO15  
GPIO16  
GPIO17  
GPIO22  
GPIO28  
GPIO30

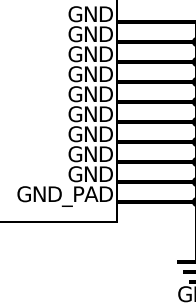
CC3220MODSF12MOBR

RF\_BG needs to be routed at 50Ω which is unique to each board geometry. The trace width needs to be determined with the PCB vendor. This design uses 0.51mm trace width for 50Ω.



ANT1  
AH316M245001-T

NC  
NC  
NC  
NC  
NC  
NC



GND