

## 24-Channel, Constant-Current LED Driver with Global Brightness Control and LED Open-Short Detection

### FEATURES

- 24-Channel Constant-Current Sink Output with On/Off Control
- Current Capability:
  - 35 mA for 16 Channels
  - 26.2 mA for 8 Channels
- Global Brightness Control (BC) for Each Color Group: 7-Bit (128 Step), Three Groups
- LED Power-Supply Voltage up to 15 V
- $V_{CC} = 3.0\text{ V to }5.5\text{ V}$
- Constant-Current Accuracy:
  - Channel-to-Channel =  $\pm 1\%$
  - Device-to-Device =  $\pm 3\%$
- CMOS Logic Level I/O
- Data Transfer Rate: 35 MHz
- BLANK Pulse Width: 15 ns
- Open Load, Short Load, and Over-Temperature Detection
- Thermal Shutdown (TSD) with Auto Restart
- Delay Switching to Prevent Inrush Current

- Operating Temperature:  $-40^{\circ}\text{C to }+85^{\circ}\text{C}$
- Packages: HTSSOP-32, QFN-32

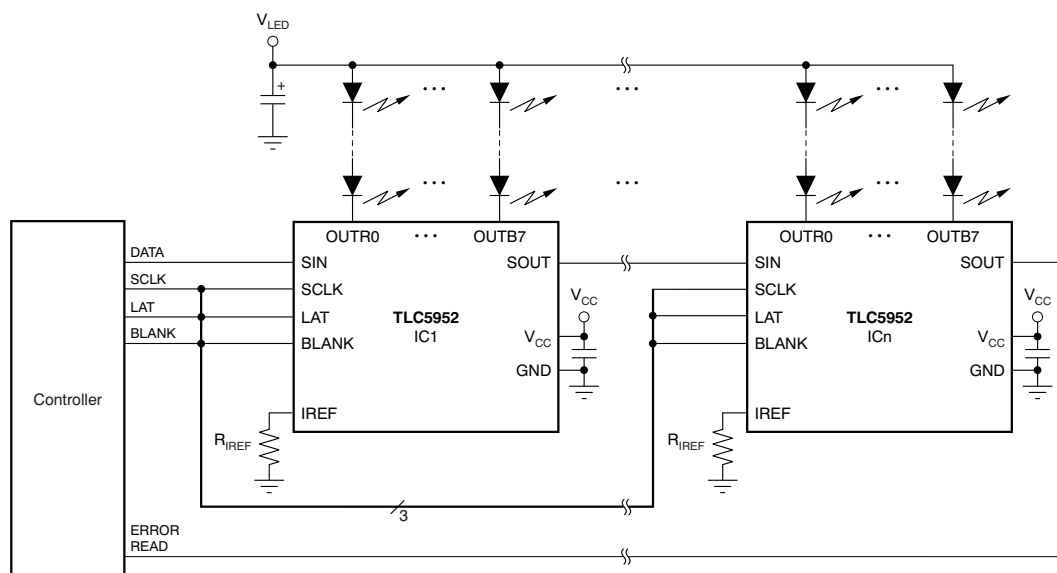
### APPLICATIONS

- Full-Color LED Displays
- LED Signboards

### DESCRIPTION

The TLC5952 is a 24-channel, constant-current sink driver. Each channel can be turned on/off with internal register data. The output channels are grouped into three groups of eight channels each. Each channel group has a 128-step global brightness control (BC) function. Both on/off data and BC are writable via a serial interface. The maximum current value of all 24 channels is set by a single external resistor.

The TLC5952 has three error detection circuits: LED open detection (LOD), LED short detection (LSD), and a thermal error flag (TEF). The error detection is read via a serial interface.



**Typical Application Circuit (Multiple Daisy-Chained TLC5952s)**



Please be aware that an important notice concerning availability, standard warranty, and use in critical applications of Texas Instruments semiconductor products and disclaimers thereto appears at the end of this data sheet.

PowerPAD is a trademark of Texas Instruments, Incorporated.  
All other trademarks are the property of their respective owners.



This integrated circuit can be damaged by ESD. Texas Instruments recommends that all integrated circuits be handled with appropriate precautions. Failure to observe proper handling and installation procedures can cause damage.

ESD damage can range from subtle performance degradation to complete device failure. Precision integrated circuits may be more susceptible to damage because very small parametric changes could cause the device not to meet its published specifications.

### ORDERING INFORMATION<sup>(1)</sup>

| PRODUCT | PACKAGE-LEAD                      | ORDERING NUMBER | TRANSPORT MEDIA, QUANTITY |
|---------|-----------------------------------|-----------------|---------------------------|
| TLC5952 | HTSSOP-32 PowerPAD™               | TLC5952DAPR     | Tape and Reel, 2000       |
|         |                                   | TLC5952DAP      | Tube, 46                  |
| TLC5952 | 5-mm × 5-mm QFN-32 <sup>(2)</sup> | TLC5952RHBR     | Tape and Reel, 3000       |
|         |                                   | TLC5952RHBT     | Tape and Reel, 250        |

(1) For the most current package and ordering information see the Package Option Addendum at the end of this document, or see the TI web site at [www.ti.com](http://www.ti.com).

(2) Product preview device.

### ABSOLUTE MAXIMUM RATINGS<sup>(1)(2)</sup>

Over operating free-air temperature range, unless otherwise noted.

| PARAMETER           |                                | TLC5952                               | UNIT                          |    |
|---------------------|--------------------------------|---------------------------------------|-------------------------------|----|
| V <sub>CC</sub>     | Supply voltage                 | V <sub>CC</sub>                       | –0.3 to +6.0                  | V  |
| I <sub>OUT</sub>    | Output current (dc)            | OUTR0-OUTR7, OUTG0-OUTG7              | 45                            | mA |
|                     |                                | OUTB0-OUTB7                           | 35                            | mA |
| V <sub>IN</sub>     | Input voltage range            | SIN, SCLK, LAT, BLANK, IREF           | –0.3 to V <sub>CC</sub> + 0.3 | V  |
| V <sub>OUT</sub>    | Output voltage range           | SOUT                                  | –0.3 to V <sub>CC</sub> + 0.3 | V  |
|                     |                                | OUTR0-OUTR7, OUTG0-OUTG7, OUTB0-OUTB7 | –0.3 to +16                   | V  |
| T <sub>J(max)</sub> | Operation junction temperature |                                       | +150                          | °C |
| T <sub>STG</sub>    | Storage temperature range      |                                       | –55 to +150                   | °C |
| ESD rating          |                                | Human body model (HBM)                | 2000                          | V  |
|                     |                                | Charged device model (CDM)            | 500                           | V  |

(1) Stresses beyond those listed under *absolute maximum ratings* may cause permanent damage to the device. These are stress ratings only, and functional operation of the device at these or any other conditions beyond those indicated under *recommended operating conditions* is not implied. Exposure to absolute-maximum-rated conditions for extended periods may affect device reliability.

(2) All voltage values are with respect to network ground terminal.

## DISSIPATION RATINGS

| PACKAGE  | DERATING FACTOR<br>ABOVE $T_A = +25^\circ\text{C}$ | $T_A < +25^\circ\text{C}$<br>POWER RATING | $T_A = +70^\circ\text{C}$<br>POWER RATING | $T_A = +85^\circ\text{C}$<br>POWER RATING |
|--|--|---|---|---|
| HTSSOP-32 with<br>PowerPAD soldered <sup>(1)</sup>     | 42.54 mW/°C  | 5318 mW                                   | 3403 mW                                   | 2765 mW                                   |
| HTSSOP-32 with<br>PowerPAD not soldered <sup>(2)</sup> | 22.56 mW/°C  | 2820 mW                                   | 1805 mW                                   | 1466 mW                                   |
| QFN-32 <sup>(3)</sup>                                  | 27.86 mW/°C  | 3482 mW                                   | 2228 mW                                   | 1811 mW                                   |

(1) With PowerPAD soldered onto copper area on printed circuit board (PCB); 2-oz. copper. For more information, see [SLMA002](#) (available for download at [www.ti.com](http://www.ti.com)).

(2) With PowerPAD not soldered onto copper area on PCB.

(3) The package thermal impedance is calculated in accordance with JESD51-5.

## RECOMMENDED OPERATING CONDITIONS

At  $T_A = -40^\circ\text{C}$  to  $+85^\circ\text{C}$ , unless otherwise noted.

| PARAMETER  |                                |  | TLC5952             |                     |     |
|--|--------------------------------|--|---------------------|---------------------|-----|
|  |                                |  | MIN                 | NOM                 | MAX |
| <b>DC CHARACTERISTICS: <math>V_{CC} = 3\text{ V}</math> to <math>5.5\text{ V}</math></b> |                                |  |                     |                     |     |
| $V_{CC}$   | Supply voltage                 |  | 3.0                 | 5.5                 | V   |
| $V_O$  | Voltage applied to output      | OUTR0-OUTR7, OUTG0-OUTG7,<br>OUTB0-OUTB7 |                     | 15                  | V   |
| $V_{IH}$   | High level input voltage       | SIN, SCLK, LAT, BLANK                    | $0.7 \times V_{CC}$ | $V_{CC}$            | V   |
| $V_{IL}$   | Low level input voltage        | SIN, SCLK, LAT, BLANK                    | GND                 | $0.3 \times V_{CC}$ | V   |
| $I_{OH}$   | High level output current      | SOUT                                     |                     | -1                  | mA  |
| $I_{OL}$   | Low level output current       | SOUT                                     |                     | 1                   | mA  |
| $I_{OLC}$  | Constant output sink current   | OUTR0-OUTR7, OUTG0-OUTG7                 |                     | 35                  | mA  |
|  |                                | OUTB0-OUTB7                              |                     | 26.2                | mA  |
| $T_A$  | Operating free-air temperature |  | -40                 | +85                 | °C  |
| $T_J$  | Operating junction temperature |  | -40                 | +125                | °C  |
| <b>AC CHARACTERISTICS, <math>V_{CC} = 3\text{ V}</math> to <math>5.5\text{ V}</math></b> |                                |  |                     |                     |     |
| $f_{CLK}$ (SCLK)   | Data shift clock frequency     | SCLK                                     |                     | 35                  | MHz |
| $T_{WH0}$  | Pulse duration                 | SCLK                                     | 10                  |                     | ns  |
| $T_{WL0}$  |                                | SCLK                                     | 10                  |                     | ns  |
| $T_{WH1}$  |                                | LAT                                      | 15                  |                     | ns  |
| $T_{WH2}$  |                                | BLANK                                    | 15                  |                     | ns  |
| $T_{WL2}$  |                                | BLANK                                    | 15                  |                     | ns  |
| $T_{SU0}$  |                                | Setup time                               | SIN – SCLK↑         | 4                   |     |
| $T_{SU1}$  | LAT↑ – SCLK↑                   |  | 150                 |                     | ns  |
| $T_{H0}$   | Hold time                      | SIN – SCLK↑                              | 3                   |                     | ns  |
| $T_{H1}$   |                                | LAT↑ – SCLK↑                             | 10                  |                     | ns  |

## ELECTRICAL CHARACTERISTICS

At  $T_A = -40^\circ\text{C}$  to  $+85^\circ\text{C}$ ,  $V_{CC} = 3\text{ V}$  to  $5.5\text{ V}$ , and  $V_{LED} = 5\text{ V}$ , unless otherwise noted. Typical values are at  $T_A = +25^\circ\text{C}$  and  $V_{CC} = 3.3\text{ V}$ .

| PARAMETER         | TEST CONDITIONS  | TLC5952  |      |     | UNIT                 |
|-------------------|--|--|------|-----|----------------------|
|                   |  | MIN  | TYP  | MAX |                      |
| $V_{OH}$          | High level output voltage<br>$I_{OH} = -1\text{ mA}$ at SOUT   | $V_{CC} - 0.4$   |      |     | V                    |
| $V_{OL}$          | Low level output voltage<br>$I_{OL} = 1\text{ mA}$ at SOUT   |  |      |     | 0.4<br>V             |
| $I_{IN}$          | Input current<br>$V_I = V_{CC}$ or GND at SIN, SCLK, LAT, and BLANK  | -1   |      |     | 1<br>$\mu\text{A}$   |
| $I_{CC1}$         | Supply current<br>SIN, SCLK, LAT = low, BLANK = high,<br>$V_{OUTRn/Gn/Bn} = 1\text{ V}$ , BCR/G/B = 7Fh,<br>$R_{IREF} = 24\text{ k}\Omega$ ( $I_{OUTRn/Gn} = 2\text{ mA}$ target, $I_{OUTBn} = 1.5\text{ mA}$ target)  | 1  |      |     | 3<br>mA              |
| $I_{CC2}$         |  | 8  |      |     | 14<br>mA             |
| $I_{CC3}$         |  | 12   |      |     | 30<br>mA             |
| $I_{CC4}$         |  | 20   |      |     | 50<br>mA             |
| $I_{OLC}$         | Constant output current<br>At OUTR0-OUTR7 and OUTG0-OUTG7,<br>All OUTRn/Gn/Bn = on, BCR/G/B = 7Fh,<br>$V_{OUTRn/Gn/Bn} = V_{OUTfix} = 1\text{ V}$ ,<br>$R_{IREF} = 1.5\text{ k}\Omega$ ( $I_{OUTRn/Gn} = 32\text{ mA}$ target)   | 29   | 32   | 35  | mA                   |
| $I_{OLC1}$        |  | At OUTB0-OUTB7,<br>All OUTRn/Gn/Bn = on, BCR/G/B = 7Fh,<br>$V_{OUTRn/Gn/Bn} = V_{OUTfix} = 1\text{ V}$ ,<br>$R_{IREF} = 1.5\text{ k}\Omega$ ( $I_{OUTBn} = 24\text{ mA}$ target) | 21.8 | 24  | 26.2                 |
| $I_{OLKG}$        | Leakage output current<br>At OUTR0-OUTR7, OUTG0-OUTG7, and OUTB0-OUTB7,<br>BLANK = high, $V_{OUTRn/Gn/Bn} = V_{OUTfix} = 15\text{ V}$ , $R_{IREF} = 1.5\text{ k}\Omega$  |  |      |     | 0.1<br>$\mu\text{A}$ |
| $\Delta I_{OLC}$  | Constant-current error <sup>(1)</sup><br>(channel-to-channel in same color group)<br>At OUTR0-OUTR7, OUTG0-OUTG7, and OUTB0-OUTB7,<br>All OUTRn/Gn/Bn = on, BCR/G/B = 7Fh,<br>$V_{OUTRn/Gn/Bn} = V_{OUTfix} = 1\text{ V}$ ,<br>$R_{IREF} = 1.5\text{ k}\Omega$ ( $I_{OUTRn/Gn} = 32\text{ mA}$ target, $I_{OUTBn} = 24\text{ mA}$ target),<br>at same color group output | $\pm 1$  |      |     | $\pm 3$<br>%         |
| $\Delta I_{OLC1}$ | Constant current error <sup>(2)</sup><br>(device to device in same color group)<br>At OUTR0-OUTR7, OUTG0-OUTG7, and OUTB0-OUTB7,<br>All OUTRn/Gn/Bn = on, BCR/G/B = 7Fh,<br>$V_{OUTRn/Gn/Bn} = V_{OUTfix} = 1\text{ V}$ ,<br>$R_{IREF} = 1.5\text{ k}\Omega$ ( $I_{OUTRn/Gn} = 32\text{ mA}$ target, $I_{OUTBn} = 24\text{ mA}$ target),<br>at same color group output   | $\pm 3$  |      |     | $\pm 6$<br>%         |

- (1) The deviation of each output in the same color group from the average of the same color group (OUTR0-OUTR7, OUTG0-OUTG7, or OUTB0-OUTB7) constant current. The deviation is calculated by the formula ( $X = R, G, \text{ or } B; n = 0-7$ ):

$$\Delta (\%) = \left[ \frac{I_{OUTXn}}{\frac{(I_{OUTX0} + I_{OUTX1} + \dots + I_{OUTX6} + I_{OUTX7})}{8}} - 1 \right] \times 100$$

- (2) The deviation of the constant-current average of each color group from the ideal constant-current value. The deviation is calculated by the formula ( $X = R, G, \text{ or } B$ ):

$$\Delta (\%) = \left[ \frac{(I_{OUTX0} + I_{OUTX1} + \dots + I_{OUTX7})}{8} - (\text{Ideal Output Current}) \right] \times 100$$

Ideal current is calculated by the following equation for OUTR0-OUTR7 and OUTG0-OUTG7 ( $X = R, G, \text{ or } B$ ):

$$I_{OUTRn/Gn}(\text{IDEAL, mA}) = 40 \times \left[ \frac{1.20}{R_{IREF} (\Omega)} \right]$$

Ideal current is calculated by the following equation for OUTR0-OUTR7 and OUTG0-OUTG7 ( $X = R, G, \text{ or } B$ ):

$$I_{OUTBn}(\text{IDEAL, mA}) = 30 \times \left[ \frac{1.20}{R_{IREF} (\Omega)} \right]$$

**ELECTRICAL CHARACTERISTICS (continued)**

At  $T_A = -40^\circ\text{C}$  to  $+85^\circ\text{C}$ ,  $V_{CC} = 3\text{ V}$  to  $5.5\text{ V}$ , and  $V_{LED} = 5\text{ V}$ , unless otherwise noted. Typical values are at  $T_A = +25^\circ\text{C}$  and  $V_{CC} = 3.3\text{ V}$ .

| PARAMETER         | TEST CONDITIONS                | TLC5952  |     |     | UNIT             |
|-------------------|--------------------------------|--|-----|-----|------------------|
|                   |                                | MIN  | TYP | MAX |                  |
| $\Delta I_{OLC2}$ | Line regulation <sup>(3)</sup> | At OTR0-OTR7, OUTG0-OUTG7, and OUTB0-OUTB7, All OTRn/Gn/Bn = on, BCR/G/B = 7Fh, $V_{OUTRn/Gn/Bn} = V_{OUTfix} = 1\text{ V}$ , $R_{IREF} = 1.5\text{ k}\Omega$                                |     |     | %                |
| $\Delta I_{OLC3}$ | Load regulation <sup>(4)</sup> | At OTR0-OTR7, OUTG0-OUTG7, and OUTB0-OUTB7, All OTRn/Gn/Bn = on, BCR/G/B = 7Fh, $V_{OUTRn/Gn/Bn} = 1\text{ V}$ to $3\text{ V}$ , $V_{OUTfix} = 1\text{ V}$ , $R_{IREF} = 1.5\text{ k}\Omega$ |     |     | %/V              |
| $T_{TEF}$         | Thermal error flag threshold   | Junction temperature <sup>(5)</sup>  |     |     | $^\circ\text{C}$ |
| $T_{HYS}$         | Thermal error flag hysteresis  | Junction temperature <sup>(5)</sup>  |     |     | $^\circ\text{C}$ |
| $V_{LOD0}$        | LED open detection threshold   | All OTRn/Gn/Bn = on, detection voltage select code = 0h  |     |     | V                |
| $V_{LOD1}$        |                                | All OTRn/Gn/Bn = on, detection voltage select code = 1h  |     |     | V                |
| $V_{LOD2}$        |                                | All OTRn/Gn/Bn = on, detection voltage select code = 2h  |     |     | V                |
| $V_{LOD3}$        |                                | All OTRn/Gn/Bn = on, detection voltage select code = 3h  |     |     | V                |
| $V_{LSD0}$        | LED short detection threshold  | All OTRn/Gn/Bn = on, detection voltage select code = 4h  |     |     | V                |
| $V_{LSD1}$        |                                | All OTRn/Gn/Bn = on, detection voltage select code = 5h  |     |     | V                |
| $V_{LSD2}$        |                                | All OTRn/Gn/Bn = on, detection voltage select code = 6h  |     |     | V                |
| $V_{LSD3}$        |                                | All OTRn/Gn/Bn = on, detection voltage select code = 7h  |     |     | V                |
| $V_{IREF}$        | Reference voltage output       | $R_{IREF} = 1.5\text{ k}\Omega$  |     |     | V                |

(3) Line regulation is calculated by the following equation ( $X = \text{R, G, or B}$ ;  $n = 0-7$ ):

$$\Delta (\%/V) = \left[ \frac{(I_{OUTXn} \text{ at } V_{CC} = 5.5\text{ V}) - (I_{OUTXn} \text{ at } V_{CC} = 3.0\text{ V})}{(I_{OUTXn} \text{ at } V_{CC} = 3.0\text{ V})} \right] \times \frac{100}{5.5\text{ V} - 3\text{ V}}$$

(4) Load regulation is calculated by the following equation ( $X = \text{R, G, or B}$ ;  $n = 0-7$ ):

$$\Delta (\%/V) = \left[ \frac{(I_{OUTXn} \text{ at } V_{OUTXn} = 3\text{ V}) - (I_{OUTXn} \text{ at } V_{OUTXn} = 1\text{ V})}{(I_{OUTXn} \text{ at } V_{OUTXn} = 1\text{ V})} \right] \times \frac{100}{3\text{ V} - 1\text{ V}}$$

(5) Not tested; specified by design.

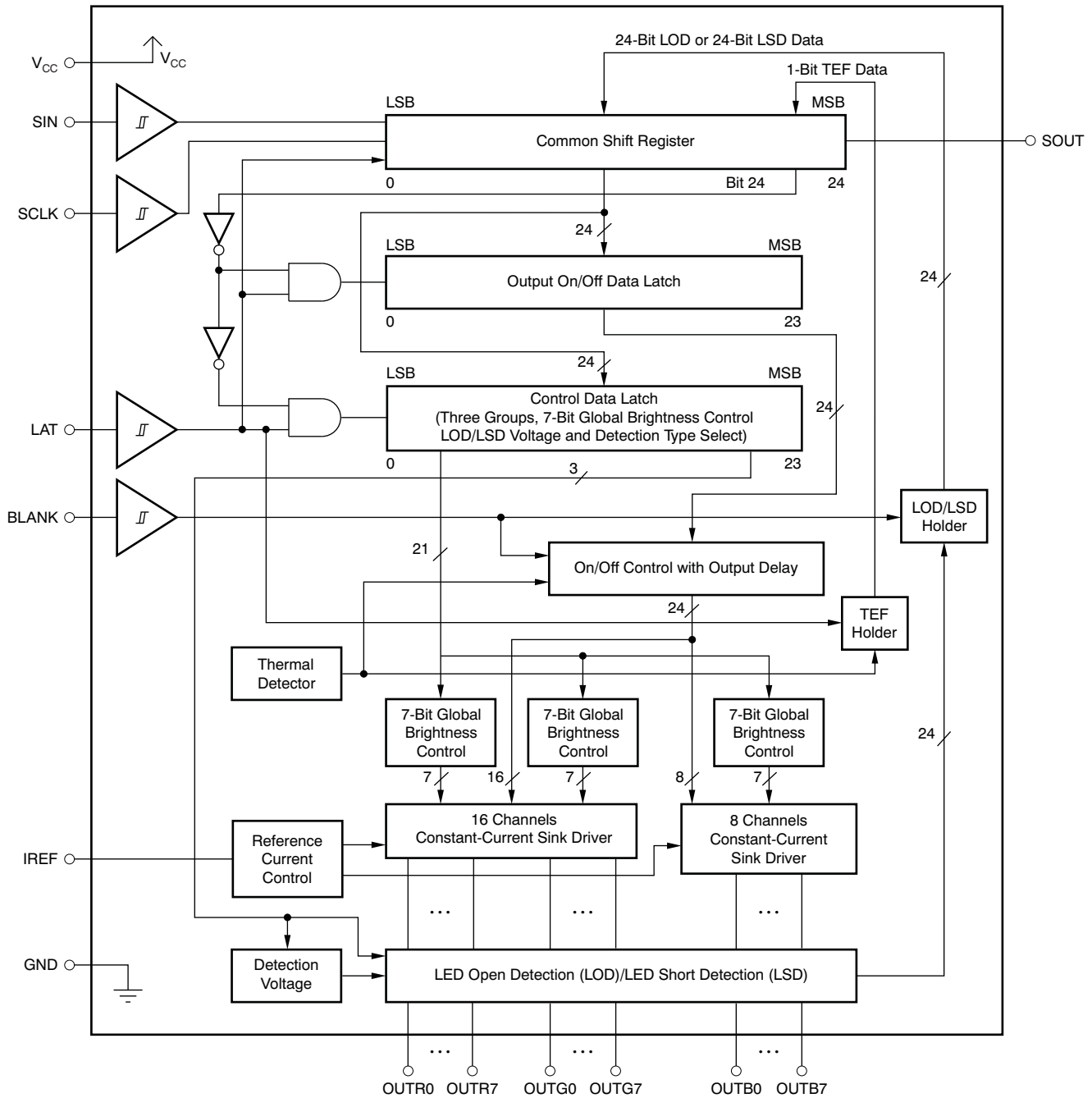
## SWITCHING CHARACTERISTICS

At  $T_A = -40^\circ\text{C}$  to  $+85^\circ\text{C}$ ,  $V_{CC} = 3\text{ V}$  to  $5.5\text{ V}$ ,  $C_L = 15\text{ pF}$ ,  $R_L = 120\ \Omega$ ,  $R_{REF} = 1.5\text{ k}\Omega$ , and  $V_{LED} = 5.0\text{ V}$ , unless otherwise noted. Typical values are at  $T_A = +25^\circ\text{C}$  and  $V_{CC} = 3.3\text{ V}$ .

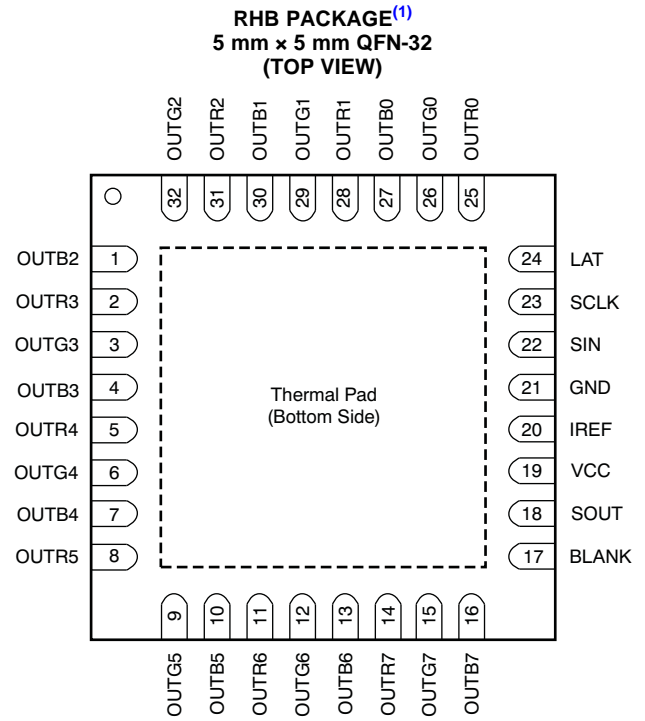
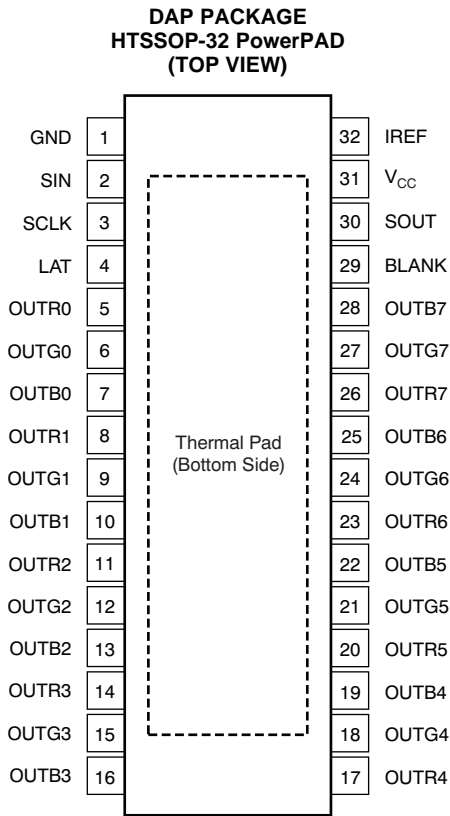
| PARAMETER     |                                       | TEST CONDITIONS   | MIN | TYP | MAX | UNIT |
|---------------|---------------------------------------|---|-----|-----|-----|------|
| $t_{R0}$      | Rise time                             | SOUT  | 6   | 15  |     | ns   |
| $t_{R1}$      |                                       | OUTR0-OUTR7, OUTG0-OUTG7, OUTB0-OUTB7, BCR/G/B = 7Fh  | 10  | 30  |     | ns   |
| $t_{F0}$      | Fall time                             | SOUT  | 6   | 15  |     | ns   |
| $t_{F1}$      |                                       | OUTR0-OUTR7, OUTG0-OUTG7, OUTB0-OUTB7, BCR/G/B = 7Fh  | 10  | 30  |     | ns   |
| $t_{D0}$      | Propagation delay time <sup>(1)</sup> | SCLK $\uparrow$ to SOUT   | 8   | 20  |     | ns   |
| $t_{D1}$      |                                       | LAT $\uparrow$ to OUTR0 on/off, BCR/G/B = 7Fh   | 22  | 45  |     | ns   |
| $t_{D2}$      |                                       | BLANK $\downarrow\uparrow$ to OUTR0 on/off, BCR/G/B = 7Fh   | 15  | 30  |     | ns   |
| $t_{D3}$      |                                       | OUTRn on to OUTGn on, OUTGn on to OUTBn on, OUTBn on to OUTRn + 1 on, BCR/G/B = 7Fh                 | 3   | 6   |     | ns   |
| $t_{D4}$      |                                       | OUTRn off to OUTGn off, OUTGn off to OUTBn off, OUTBn off to OUTRn + 1 off, BCR/G/B = 7Fh           | 3   | 6   |     | ns   |
| $t_{D5}$      |                                       | LAT $\uparrow$ to $I_{OUTn}$ changing by global brightness control (BC data are 0Ch-72h or 72h-0Ch) | 20  | 50  |     | ns   |
| $t_{ON\_ERR}$ | Output on-time error <sup>(2)</sup>   | On/off latched data = '1', BCR/G/B = 7Fh, 20 ns BLANK low level one-shot pulse input                | -11 |     | 5   | ns   |

- (1) Propagation delay,  $t_{D3}$  (OUTRn on to OUTGn on, OUTGn on to OUTBn on, OUTBn on to OUTRn + 1 on ) is calculated by the formula:  
 $t_{D3}$  (ns) = (the propagation delay between OUTR0 to OUTB7 = on)/23  
 $t_{D4}$  (OUTRn to OUTGn = off, OUTGn to OUTBn = off, OUTBn to OUTRn + 1 = off ) is calculated by the formula:  
 $t_{D4}$  (ns) = (the propagation delay between OUTR0 to OUTB7 = off)/23
- (2) Output on-time error is calculated by the formula:  $t_{ON\_ERR}$  (ns) =  $t_{OUT\_ON}$  – BLANK low-level pulse width.  $t_{OUT\_ON}$  is the actual on-time of the constant current output.

FUNCTIONAL BLOCK DIAGRAM



### PIN CONFIGURATIONS



(1) Product preview device.



**TERMINAL FUNCTIONS**

| TERMINAL        |                               |                             | I/O | DESCRIPTION   |
|-----------------|-------------------------------|-----------------------------|-----|---|
| NAME            | NO.                           |                             |     |   |
|                 | DAP                           | RHB <sup>(1)</sup>          |     |   |
| SIN             | 2                             | 22                          | I   | Serial data input for the 25-bit common shift register  |
| SCLK            | 3                             | 23                          | I   | Serial data shift clock. Data present on SIN are shifted to the LSB of the common shift register with the rising edge of SCLK. Data in the shift register are shifted toward the MSB at each rising edge of SCLK. The MSB data of the common shift register appear on SOUT.                               |
| LAT             | 4                             | 24                          | I   | Edge triggered latch. The rising edge of LAT latches the data from the common shift register into the output on/off data latch. See the <a href="#">Output On/Off Data Latch</a> section for more details.  |
| BLANK           | 29                            | 17                          | I   | All outputs are blank. When BLANK is high, all constant-current outputs (OUTR0-OUTR7, OUTG0-OUTG7, and OUTB0-OUTB7) are forced off. When BLANK is low, all constant current outputs are controlled by the on/off control data in the data latch.  |
| IREF            | 32                            | 20                          | I/O | Reference current terminal. The maximum current for the outputs OUTR0-OUTR7, OUTG0-OUTG7, and OUTB0-OUTB7 is set with a resistor from IREF to GND.  |
| SOUT            | 30                            | 18                          | O   | Serial data output. The MSB of the 25-bit common shift register is shifted out at the rising edge of SCLK.  |
| OUTR0-OUTR7     | 5, 8, 11, 14, 17, 20, 23, 26  | 2, 5, 8, 11, 14, 25, 28, 31 | O   | Constant-current outputs for the RED LED group. Multiple outputs can be configured in parallel to increase the constant-current capability. Different voltages can be applied to each output. These outputs are turned on/off by the BLANK signal and the data in the output on/off control data latch.   |
| OUTG0-OUTG7     | 6, 9, 12, 15, 18, 21, 24, 27  | 3, 6, 9, 12, 15, 26, 29, 32 | O   | Constant-current outputs for the GREEN LED group. Multiple outputs can be configured in parallel to increase the constant-current capability. Different voltages can be applied to each output. These outputs are turned on/off by the BLANK signal and the data in the output on/off control data latch. |
| OUTB0-OUTB7     | 7, 10, 13, 16, 19, 22, 25, 28 | 1, 4, 7, 10, 13, 16, 27, 30 | O   | Constant-current outputs for the BLUE LED group. Multiple outputs can be configured in parallel to increase the constant-current capability. Different voltages can be applied to each output. These outputs are turned on/off by the BLANK signal and the data in the output on/off control data latch.  |
| V <sub>CC</sub> | 31                            | 19                          | —   | Power-supply voltage  |
| GND             | 1                             | 21                          | —   | Power ground  |

(1) Product preview device.

PARAMETER MEASUREMENT INFORMATION

PIN EQUIVALENT INPUT AND OUTPUT SCHEMATIC DIAGRAMS

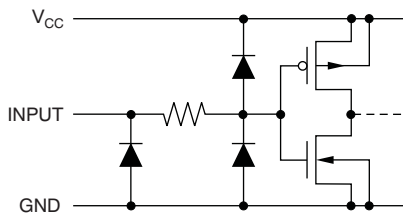


Figure 1. SIN, SCLK, LAT, BLANK

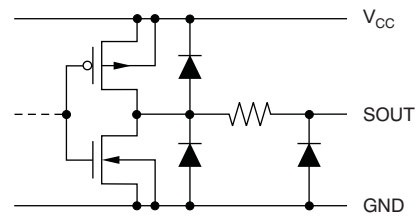


Figure 2. SOUT

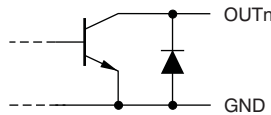
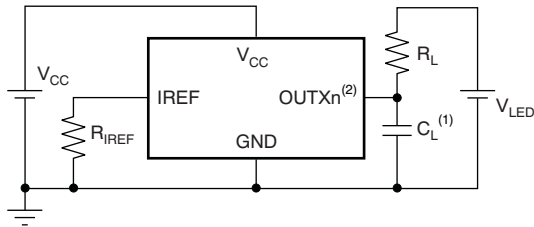


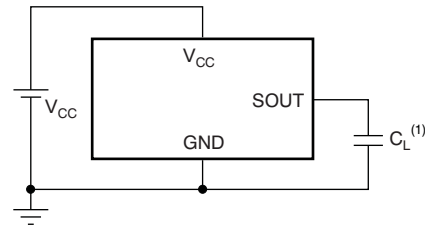
Figure 3. OUTR0/G0/B0 Through OUTR7/G7/B7

TEST CIRCUITS



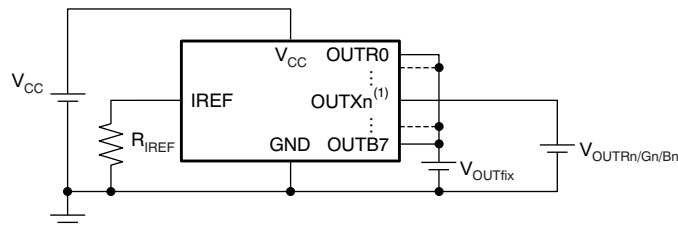
- (1)  $C_L$  includes measurement probe and jig capacitance.
- (2) X = R, G, or B; n = 0-7.

Figure 4. Rise Time and Fall Time Test Circuit for OUTRn/Gn/Bn



- (1)  $C_L$  includes measurement probe and jig capacitance.

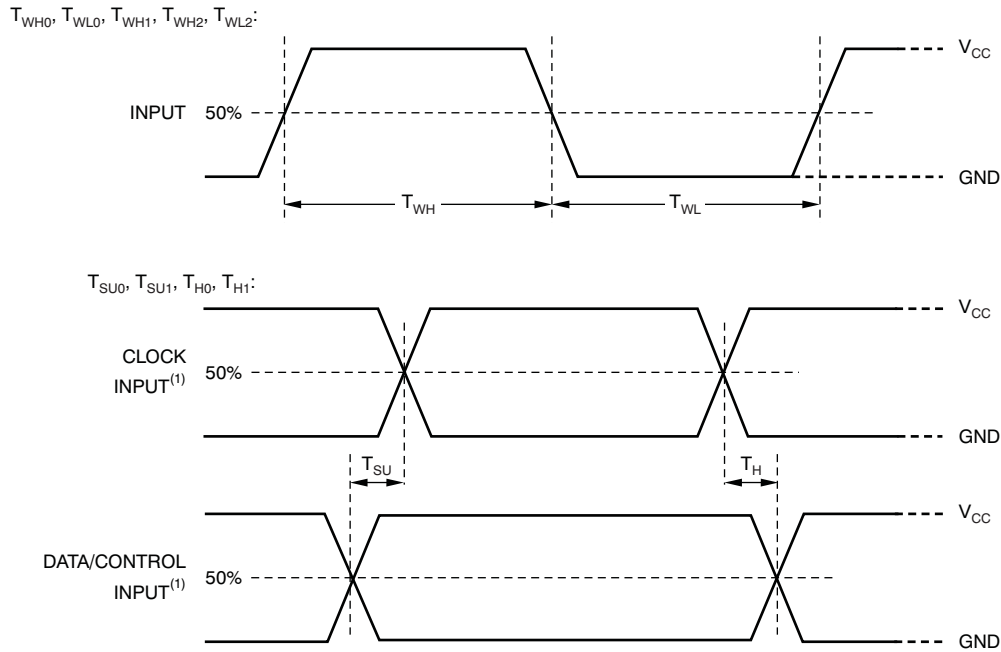
Figure 5. Rise Time and Fall Time Test Circuit for SOUT



- (1) X = R, G, or B; n = 0-7.

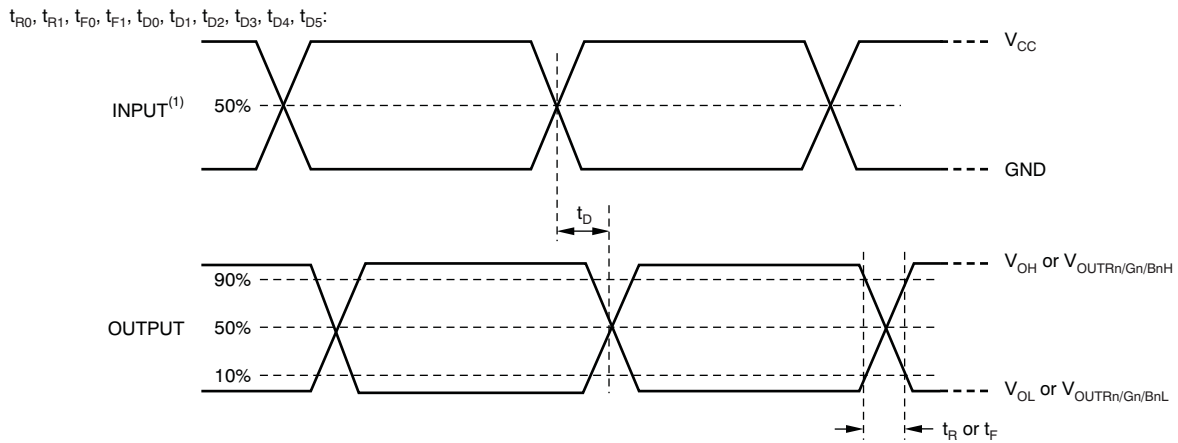
Figure 6. Constant-Current Test Circuit for OUTRn/Gn/Bn

TIMING DIAGRAMS



(1) Input pulse rise and fall time is 1 ns to 3 ns.

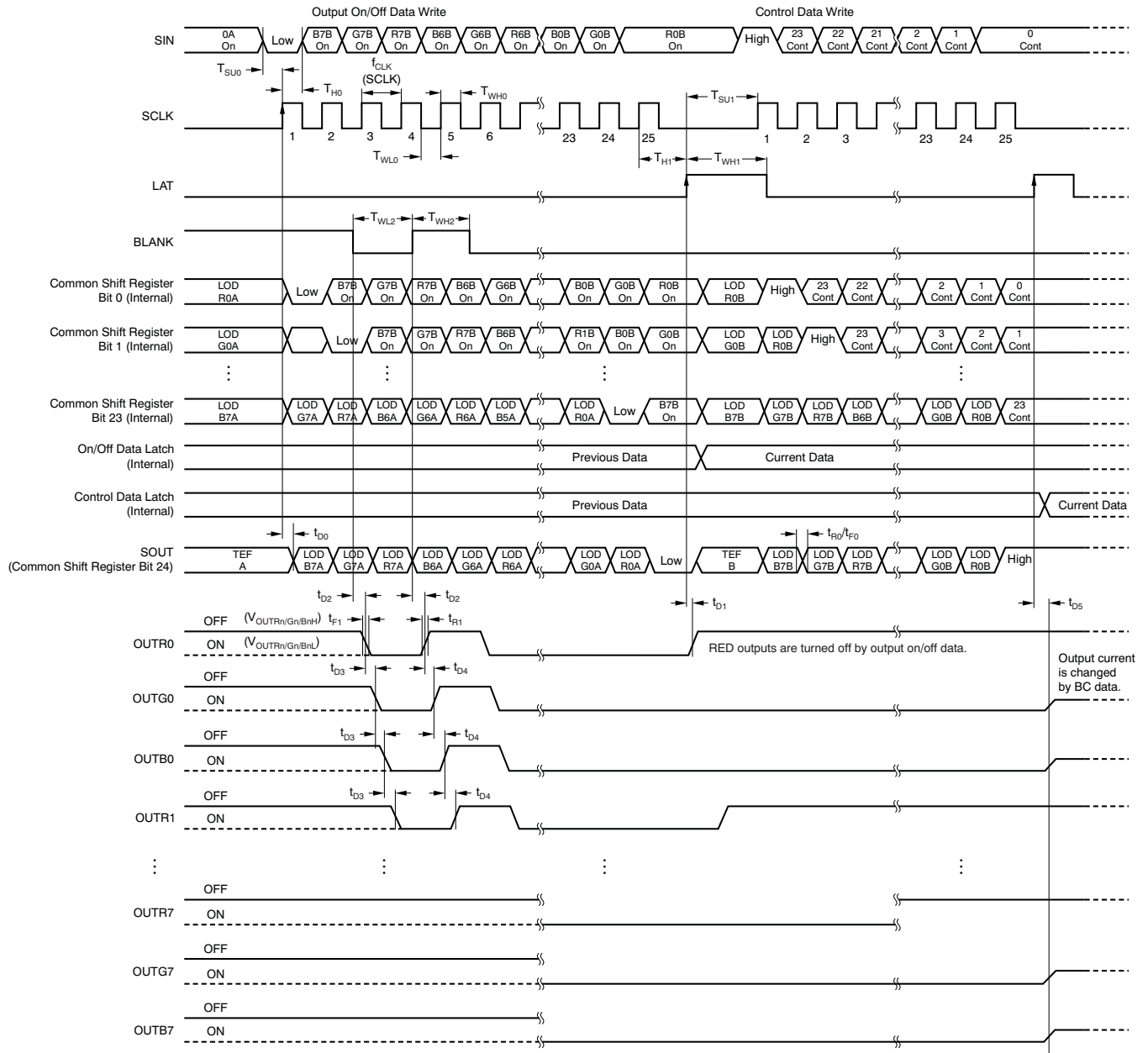
Figure 7. Input Timing



(1) Input pulse rise and fall time is 1 ns to 3 ns.

Figure 8. Output Timing

**TIMING DIAGRAMS (continued)**



**Figure 9. Timing Diagram**

### TYPICAL CHARACTERISTICS

At  $T_A = +25^\circ\text{C}$  and  $V_{CC} = 3.3\text{ V}$ , unless otherwise noted.

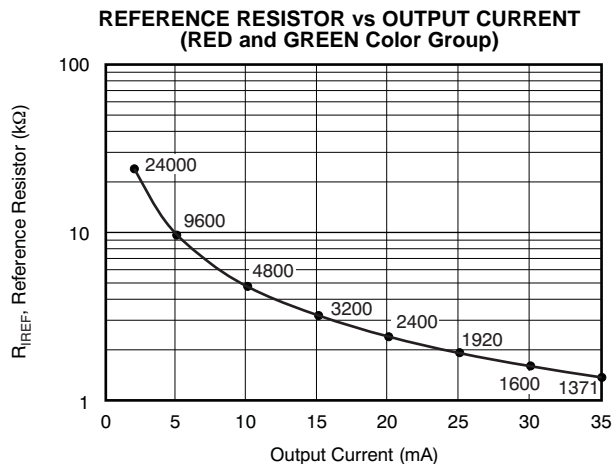


Figure 10.

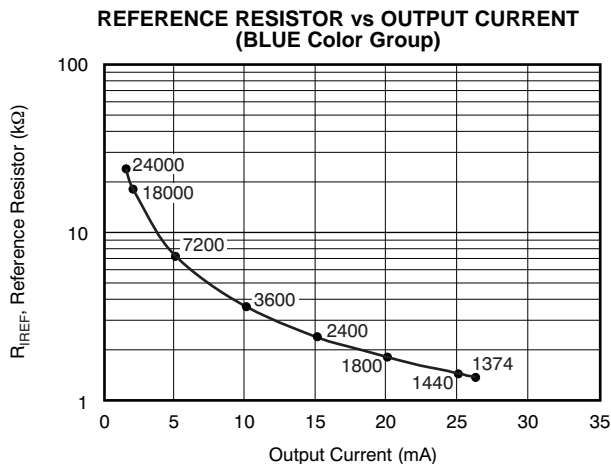


Figure 11.

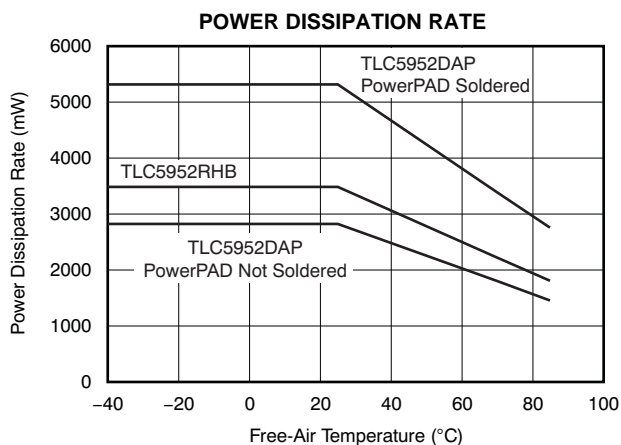


Figure 12.

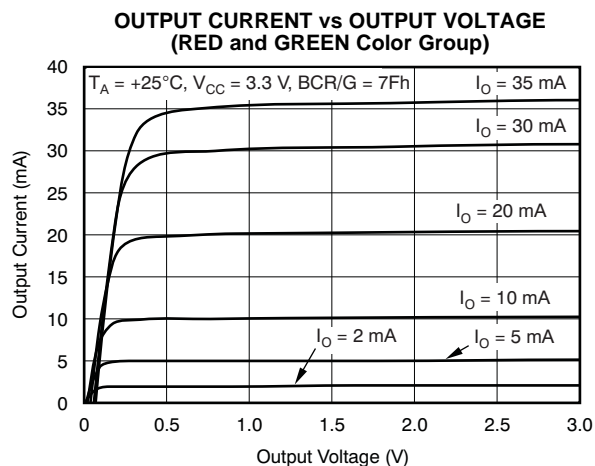


Figure 13.

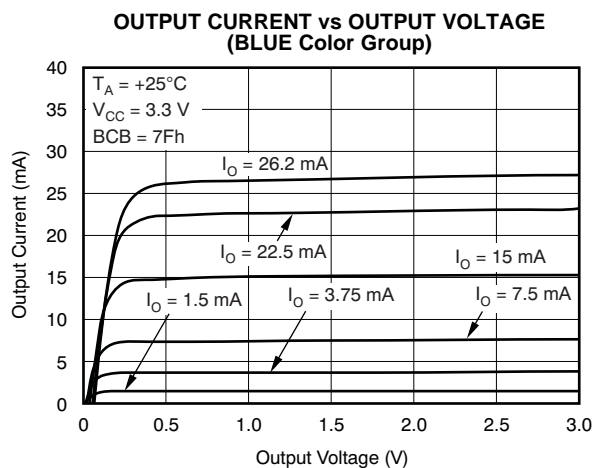


Figure 14.

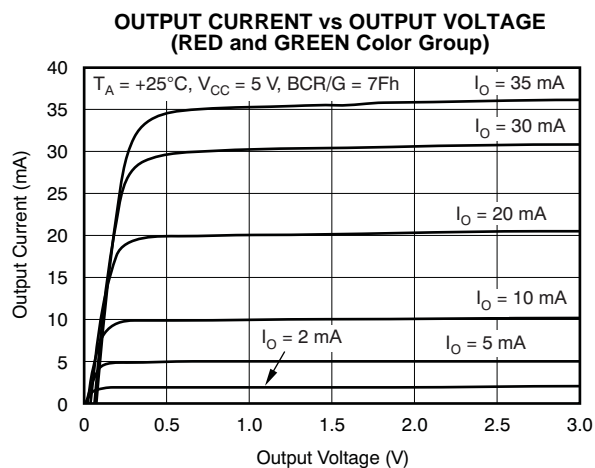


Figure 15.

**TYPICAL CHARACTERISTICS (continued)**

At  $T_A = +25^\circ\text{C}$  and  $V_{CC} = 3.3\text{ V}$ , unless otherwise noted.

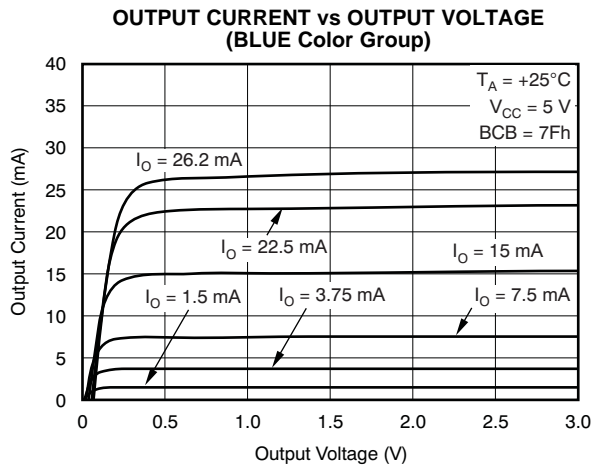


Figure 16.

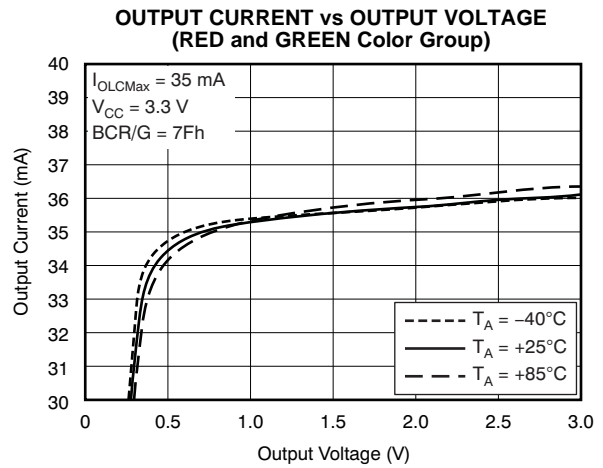


Figure 17.

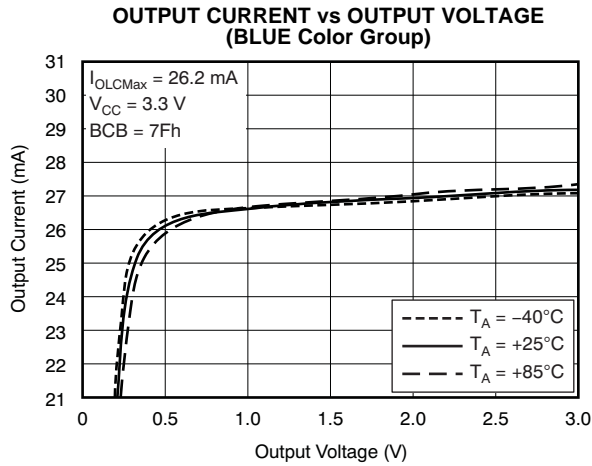


Figure 18.

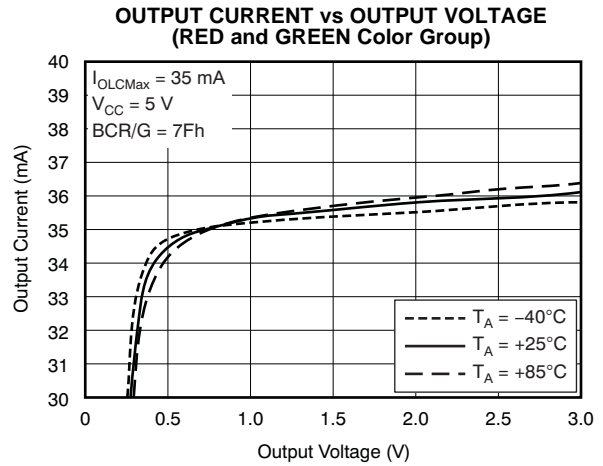


Figure 19.

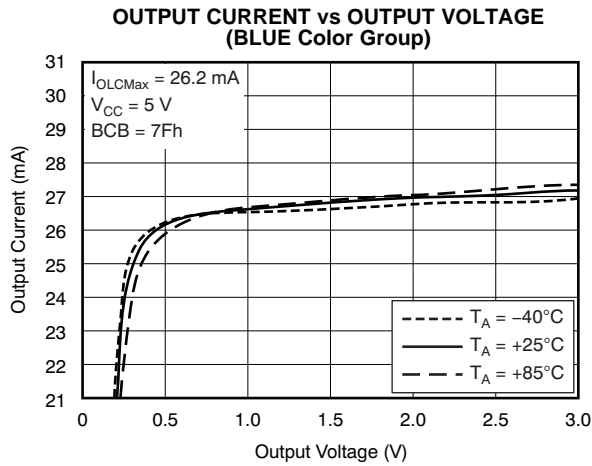


Figure 20.

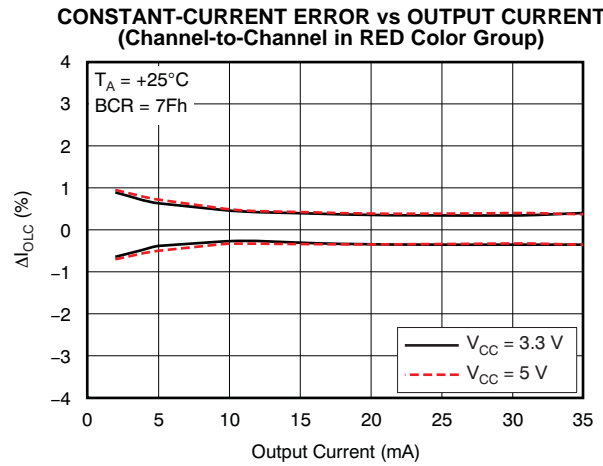


Figure 21.

TYPICAL CHARACTERISTICS (continued)

At  $T_A = +25^\circ\text{C}$  and  $V_{CC} = 3.3\text{ V}$ , unless otherwise noted.

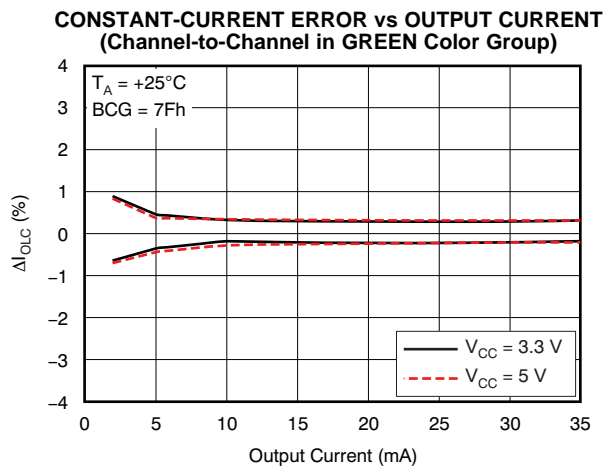


Figure 22.

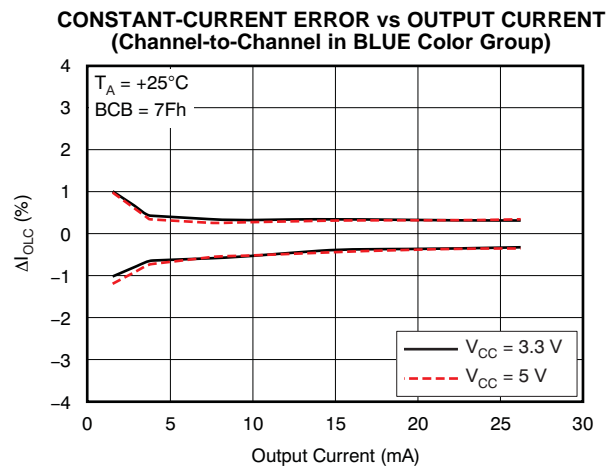


Figure 23.

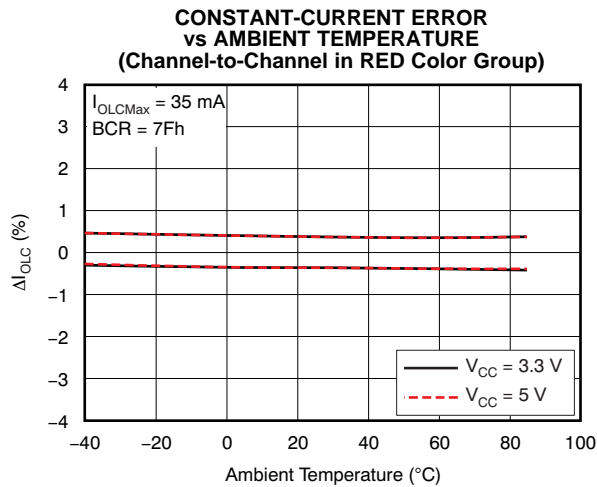


Figure 24.

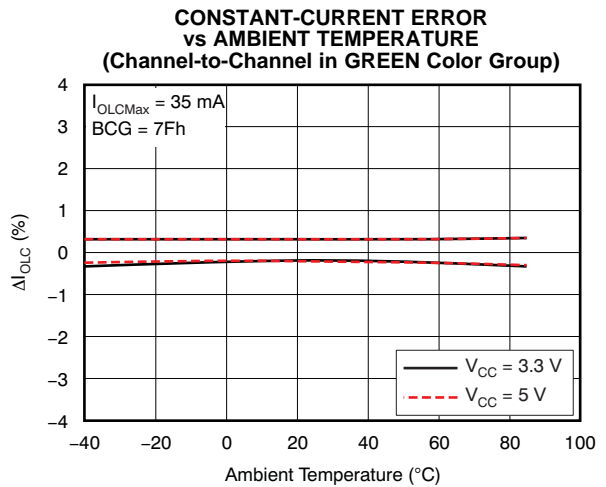


Figure 25.

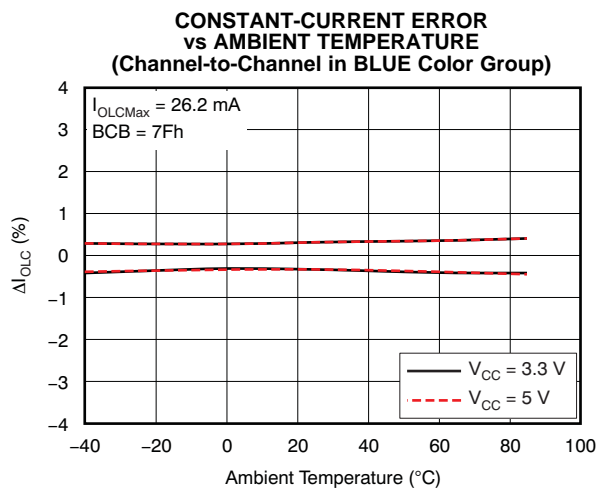


Figure 26.

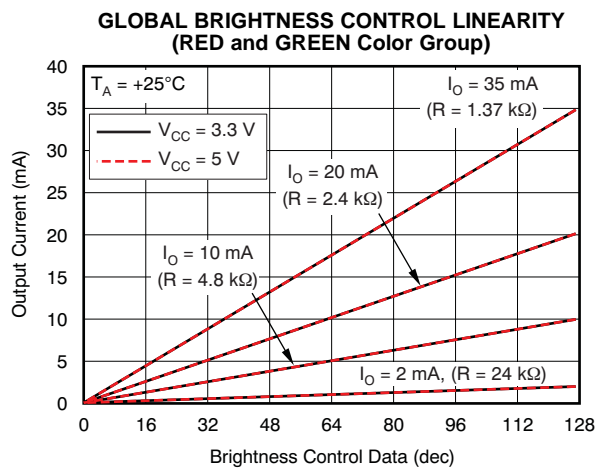
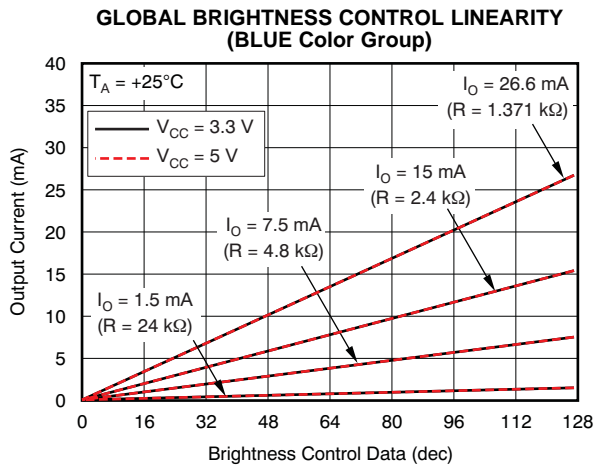


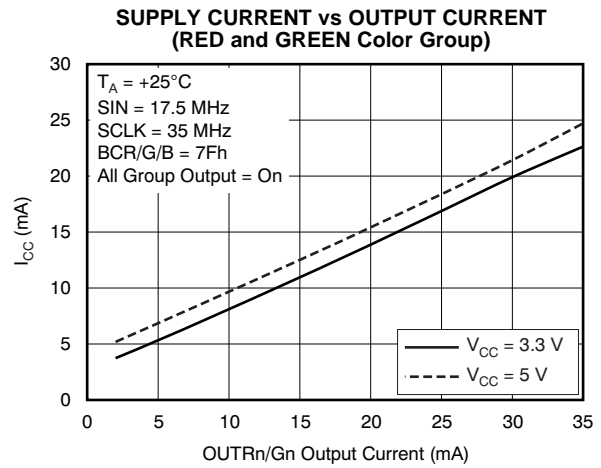
Figure 27.

**TYPICAL CHARACTERISTICS (continued)**

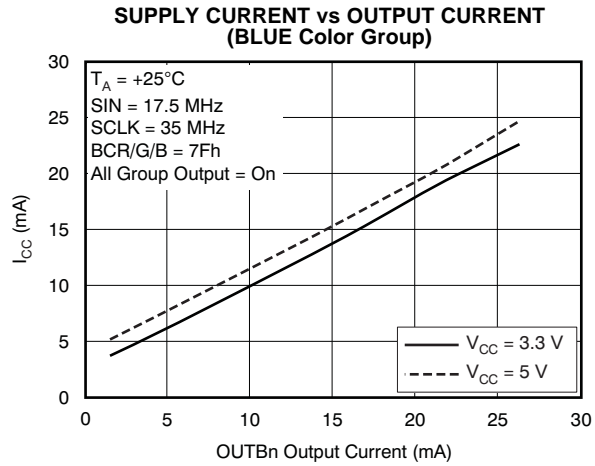
At  $T_A = +25^\circ\text{C}$  and  $V_{CC} = 3.3\text{ V}$ , unless otherwise noted.



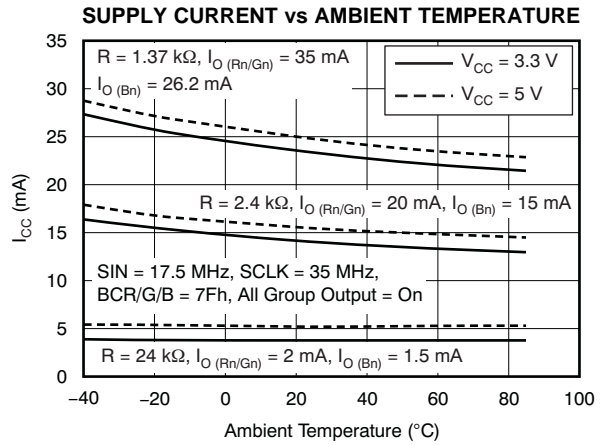
**Figure 28.**



**Figure 29.**

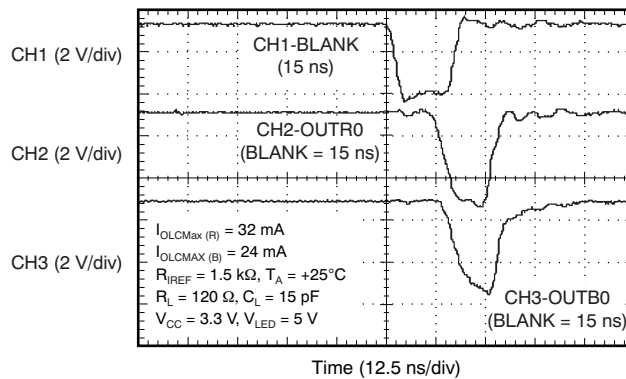


**Figure 30.**



**Figure 31.**

**CONSTANT-CURRENT OUTPUT VOLTAGE WAVEFORM**



**Figure 32.**



## DETAILED DESCRIPTION

### MAXIMUM CONSTANT SINK CURRENT VALUE

The maximum output current per channel,  $I_{OLCMax}$ , is programmed by a single resistor,  $R_{IREF}$ , which is placed between the IREF and GND pins. The voltage on IREF is set by an internal band-gap  $V_{IREF}$ , with a typical value of 1.20 V. The maximum channel current is equivalent to the current flowing through  $R_{IREF}$  multiplied by a factor of 40 for OUTRn/Gn and 30 for OUTBn. The maximum output current per channel can be calculated by [Equation 1](#).

$$\begin{aligned}
 R_{IREF} \text{ (k}\Omega\text{)} &= \frac{V_{IREF} \text{ (V)}}{I_{OLCMax} \text{ (mA)}} \times 40 \text{ (for OUTRn/Gn)} \\
 &= \frac{V_{IREF} \text{ (V)}}{I_{OLCMax} \text{ (mA)}} \times 30 \text{ (for OUTBn)}
 \end{aligned}
 \tag{1}$$

Where:

$V_{IREF}$  = the internal reference voltage on IREF (1.20 V, typical)

$I_{OLCMax}$  = 2 mA to 35 mA at OUTRn/Gn and 1.5 mA to 26.2 mA at OUTBn

$I_{OLCMax}$  is the largest current for each output. Each output sinks the  $I_{OLCMax}$  current when it is turned on and the global brightness control data are set to the maximum value of 7Fh (127d). Each output sink current can be reduced by lowering the output global brightness control (BC) value.

$R_{IREF}$  must be between 1.37 k $\Omega$  and 24 k $\Omega$  to hold  $I_{OLCMax}$  between 35 mA (typ) and 2 mA (typ) for OUTRn/Gn and between 26.2 mA (typ) and 1.5 mA (typ) for OUTBn. Otherwise, the output may be unstable. Output currents lower than 2 mA (or 1.5 mA for OUTBn) can be achieved by setting  $I_{OLCMax}$  to 2 mA or higher and then using global brightness control to lower the output current.

[Table 1](#) shows the characteristics of the constant-current sink versus the external resistor,  $R_{IREF}$ .

**Table 1. Maximum Constant Current Output versus External Resistor Value**

| $I_{OLCMax}$ (mA) |       | $R_{IREF}$ (k $\Omega$ ) |
|-------------------|-------|--------------------------|
| OUTRn, OUTGn      | OUTBn |                          |
| 35                | 26.28 | 1.37                     |
| 30                | 22.5  | 1.6                      |
| 25                | 18.75 | 1.92                     |
| 20                | 15    | 2.4                      |
| 15                | 11.25 | 3.2                      |
| 10                | 7.5   | 4.8                      |
| 5                 | 3.75  | 9.6                      |
| 2                 | 1.5   | 24                       |

## GLOBAL BRIGHTNESS CONTROL (BC) FUNCTION: SINK CURRENT CONTROL

The TLC5952 is able to adjust the output current of each of the three color groups OUTR0-OUTR7, OUTG0-OUTG7, and OUTB0-OUTB7. This function is called *global brightness control* (BC). The BC function allows users to adjust the global brightness of LEDs connected to the three output groups (OUTR0-OUTR7, OUTG0-OUTG7, and OUTB0-OUTB7). All color group output currents can be adjusted in 128 steps from 0% to 100% of the maximum output current,  $I_{OLCMax}$ . The brightness control data are entered into the TLC5952 via the serial interface. When the BC data change, the output current also changes immediately. When the IC is powered on, the data in the common shift register and the control data latch are not set to any default values. Therefore, BC data must be written to the control data latch before turning on the constant-current output.

Equation 2 determines the output sink current for each color group. Table 2 summarizes the BC data versus current ratio and set current value.

$$I_{OUT} \text{ (mA)} = I_{OLCMax} \text{ (mA)} \times \left( \frac{BCR/G/B}{127d} \right) \quad (2)$$

Where:

$I_{OLCMax}$  = the maximum channel current for each channel determined by  $R_{IREF}$

BCR/G/B = the global brightness control value in the control data latch for each output color group

**Table 2. BC Data versus Current Ratio and Set Current Value**

| BC DATA<br>(Binary) | BC DATA<br>(Decimal) | BC DATA<br>(Hex) | RATIO OF OUTPUT<br>CURRENT TO<br>$I_{OLCMax}$<br>(mA, Typical) | $I_{OUT}$ , mA<br>( $I_{OLCMax} = 35$ mA,<br>Typical) | $I_{OUT}$ , mA<br>( $I_{OLCMax} = 2$ mA,<br>Typical) |
|---------------------|----------------------|------------------|--|---|--|
| 000 0000            | 0                    | 00               | 0  | 0   | 0  |
| 000 0001            | 1                    | 01               | 0.8  | 0.28  | 0.02   |
| 000 0010            | 2                    | 02               | 1.6  | 0.55  | 0.03   |
| —                   | —                    | —                | —  | —   | —  |
| 111 1101            | 125                  | 7D               | 98.4   | 34.45   | 1.97   |
| 111 1110            | 126                  | 7E               | 99.2   | 34.72   | 1.98   |
| 111 1111            | 127                  | 7F               | 100.0  | 35.00   | 2.00   |

## CONSTANT-CURRENT OUTPUT ON/OFF CONTROL

When BLANK is low, each output is controlled by the data in the output on/off data latch. When data corresponding to an output are equal to '1', the output turns on; when the data corresponding to an output are equal to '0', the output turns off. When BLANK is high, all outputs are forced off.

When the IC is powered on, the data in the output on/off data latch are not set to any default values. Therefore, on/off data must be written to the output on/off data latch before turning on the constant-current output and pulling BLANK low.

If there are any OUTRn/Bn/Bn outputs not connected to an LED, including open for short-to-ground failures, the on/off data corresponding to the unconnected output should be set to '0' before the LED is turned on. Otherwise, the  $V_{CC}$  supply current ( $I_{CC}$ ) increases while the LEDs are on. A truth table for the on/off control data is shown in Table 3.

**Table 3. On/Off Control Data Truth Table**

| ON/OFF CONTROL DATA | CONSTANT-CURRENT OUTPUT<br>STATUS |
|---------------------|-----------------------------------|
| 0                   | Off                               |
| 1                   | On                                |

## REGISTER AND DATA LATCH CONFIGURATION

The TLC5952 has two writable data latches: the output on/off data latch and the control data latch. Both data latches are 24 bits in length. If the common shift register MSB is '0', the least significant 24 bits of data from the 25-bit common shift register are latched into the output on/off data latch. If the MSB is '1', the data are latched into the control data latch. Figure 33 shows the common shift register and the control data latch configuration.

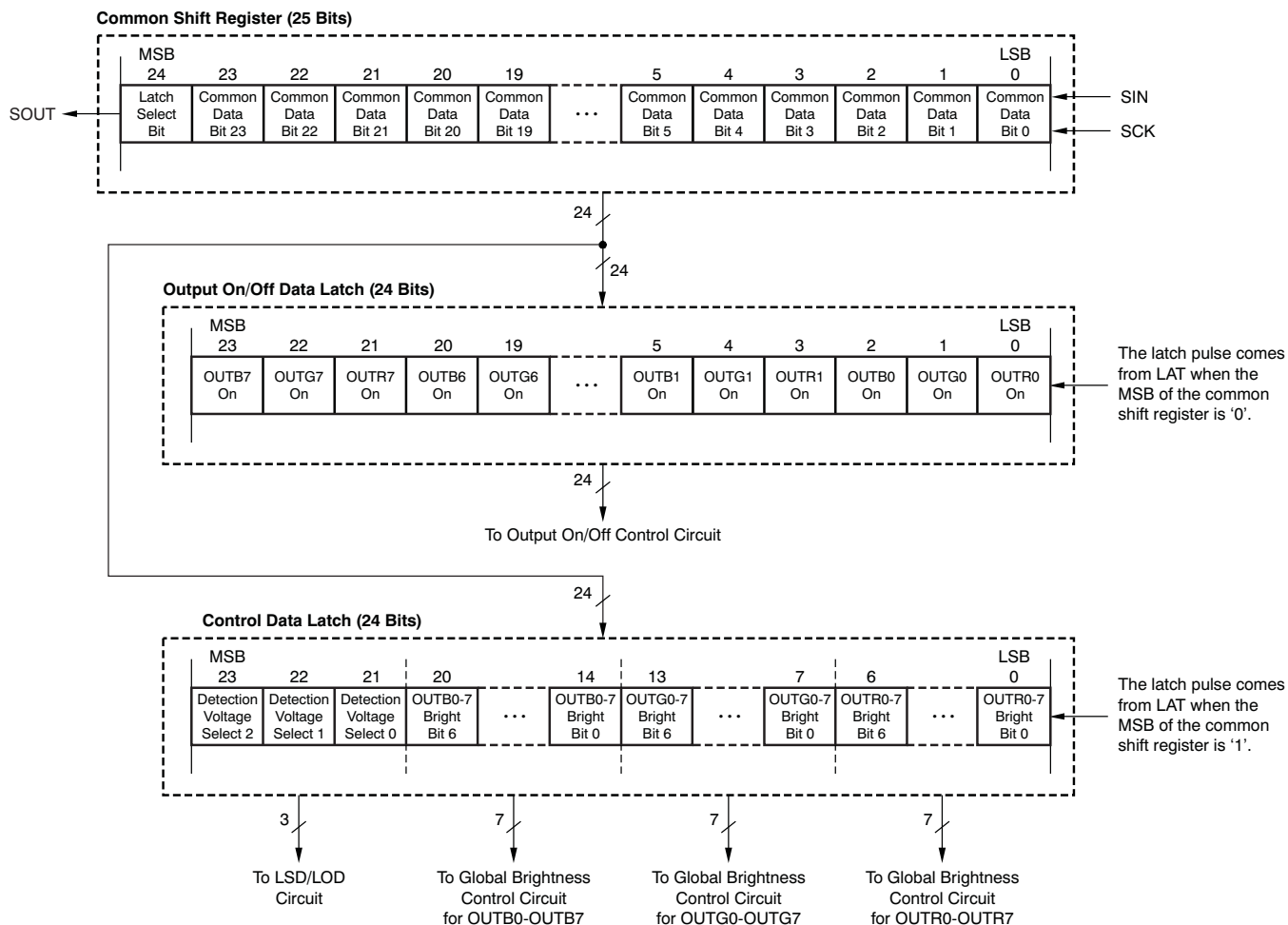


Figure 33. Grayscale Shift Register and Data Latch Configuration

### Output On/Off Data Latch

The output on/off data latch is 24 bits long. This latch is used to turn each output current sink (OUTRn/Gn/Bn) on or off. When the MSB of the common shift register is set to '0', the lower 24 bits are written to the output on/off data latch on the rising edge of LAT. If the output on/off data latch bit corresponding to an output is '0', the output is turned off; if the bit is a '1', the output is turned on.

When the IC is powered on, the data in the output on/off data latch are not set to any default value. Therefore, the on/off control data should be written to the data latch before the constant-current outputs are turned on.

### Control Data Latch

The control data latch is 24 bits long and is used to adjust the LED current for each color group (OUTR0-OUTR7, OUTG0-OUTG7, and OUTB0-OUTB7). The LED current for each group can be adjusted between 0% and 100% of  $I_{OLC\text{MAX}}$  in 128 steps (7-bit resolution). This data latch is also used to select the error detection type, LED open detection (LOD) or LED short detection (LSD), and the threshold voltage. When the MSB of the common shift register is set to '1', the lower 24 bits are written to the control data latch on the rising edge of LAT. [Table 4](#) shows the control data latch bit assignment.

When the IC is powered on, the data in the control data latch are not set to a default value. Therefore, the control data latch data should be written to the latch before the constant-current outputs are turned on.

**Table 4. Data Bit Assignment**

| BITS  | DESCRIPTION   |
|-------|---|
| 6-0   | Global brightness control data for RED group (OUTR0-OUTR7, data = 00h to 7Fh)   |
| 13-7  | Global brightness control data for GREEN group (OUTG0-OUTG7, data = 00h to 7Fh)   |
| 20-14 | Global brightness control data for BLUE group (OUTB0-OUTB7, data = 00h to 7Fh)  |
| 23-21 | Detection voltage and type select (data = 0h to 7h)<br>0 = LED open detection with 0.3 V (typ) threshold<br>1 = LED open detection with 0.6 V (typ) threshold<br>2 = LED open detection with 0.9 V (typ) threshold<br>3 = LED open detection with 1.2 V (typ) threshold<br>4 = LED short detection with $V_{CC} \times 60\%$ (typ) threshold<br>5 = LED short detection with $V_{CC} \times 70\%$ (typ) threshold<br>6 = LED short detection with $V_{CC} \times 80\%$ (typ) threshold<br>7 = LED short detection with $V_{CC} \times 90\%$ (typ) threshold |

Figure 34 shows the operation to write data into the common shift register and control data latch.

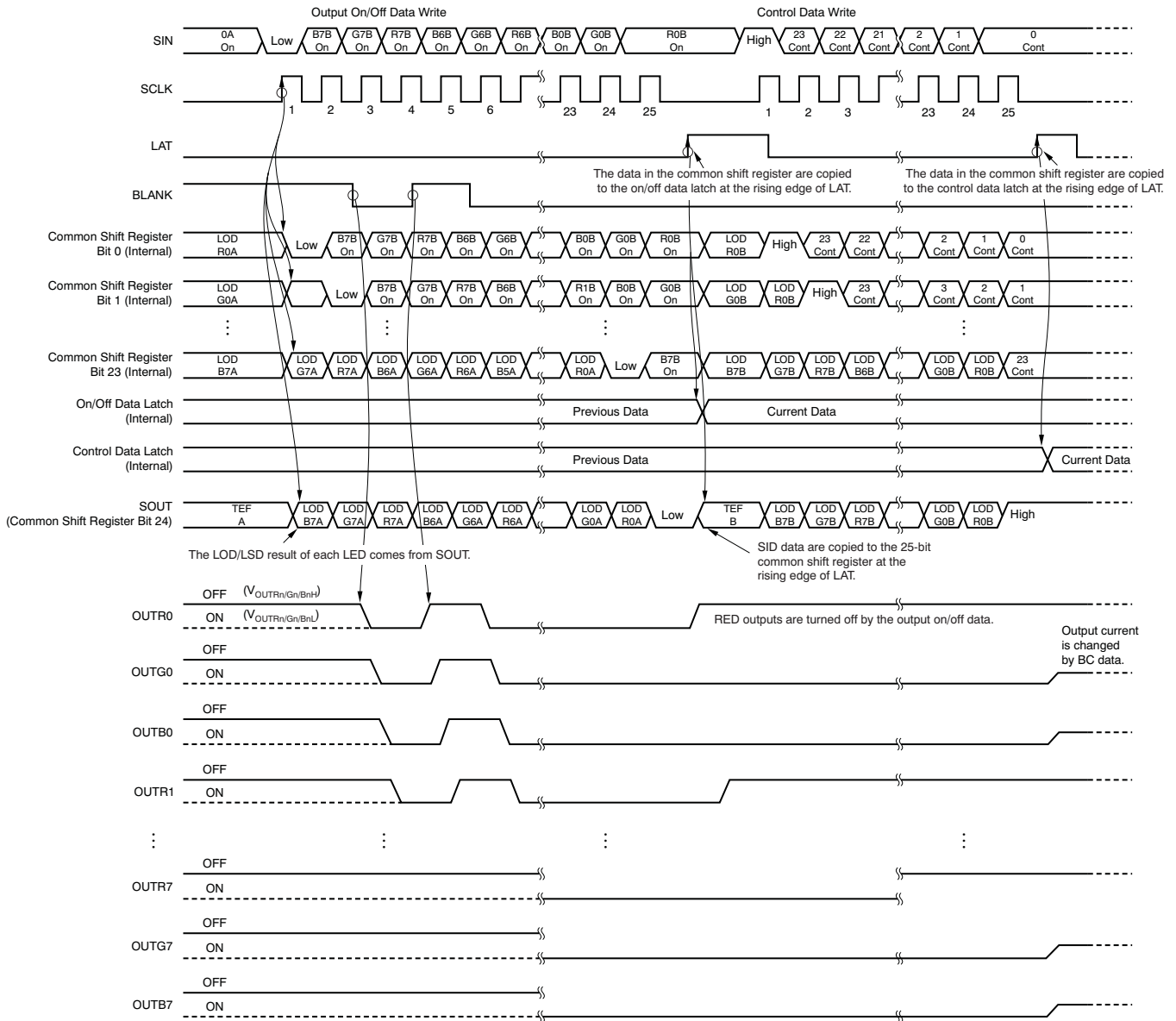


Figure 34. Data Write Operation

## STATUS INFORMATION DATA (SID)

The 25-bit word status information data (SID) contains the status of the LED open detection (LOD) or LED short detection (LSD), and thermal error flag (TEF). When the MSB of the common shift register is set to '0', the SID overwrites the common shift register data at the rising edge of LAT after the data in the common shift register are copied to the output on/off data latch. If the common shift register MSB is '1', the SID data are not copied to the common shift register.

After being copied into the common shift register, new SID data are not available until new data are written into the common shift register. If new data are not written, the LAT signal is ignored. To recheck SID data without changing the constant-current output on/off data, reprogram the common shift register with the same data that are currently programmed into the output on/off data latch. When LAT goes high, the output on/off data do not change, but new SID data are loaded into the common shift register. LOD, LSD, and TEF are shifted out of SOUT with each rising edge of SCLK.

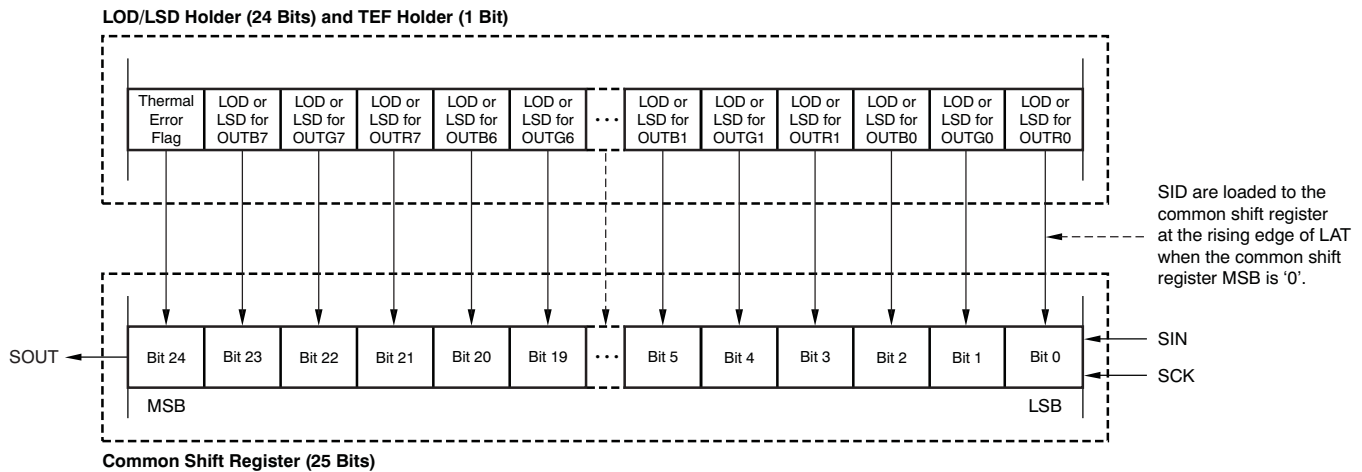


Figure 35. SID Load Assignment

## LED OPEN DETECTION (LOD), LED SHORT DETECTION (LSD), AND THERMAL ERROR FLAG (TEF)

LOD detects a fault caused by an LED open circuit or a short from  $OUTR_n/G_n/B_n$  to ground by comparing the  $OUTR_n/G_n/B_n$  voltage to the LOD detection threshold voltage level set in the control data latch (Table 4). If the  $OUTR_n/G_n/B_n$  voltage is lower than the programmed voltage, that output LOD bit is set to '1' to indicate an open LED. Otherwise, the LOD bit is set to '0'. LOD data are only valid for outputs programmed to be on. LOD data for outputs programmed to be off are always '0'.

LSD data detects a fault caused by a shorted LED by comparing the  $OUTR_n/G_n/B_n$  voltage to the LSD detection threshold voltage level set in the control data latch (Table 4). If the  $OUTR_n/G_n/B_n$  voltage is higher than the programmed voltage, that output LOD bit is set to '1' to indicate a shorted LED. Otherwise, the LSD bit is set to '0'. LSD data are only valid for outputs programmed to be on. LSD data for outputs programmed to be off are always '0'.

LOD/LSD data are not valid until  $1\ \mu\text{s}$  after the falling edge of BLANK. Therefore, BLANK must be low for at least  $1\ \mu\text{s}$  before going high. At the rising edge of BLANK, the LOD/LSD detection data are latched in the LOD/LSD holder. Changes in the LOD/LSD data while BLANK is low are directly connected to the output of the LOD/LSD holder, but are only valid  $1\ \mu\text{s}$  after the change. The rising edge of LAT transfers the output data of the LOD/LSD holder to the common shift register.

As shown in [Table 5](#), LOD and LSD data cannot be checked simultaneously. LOD/LSD data are not valid when TEF is active because all outputs are forced off.

The TEF bit indicates that the IC junction temperature exceeds the temperature threshold ( $T_{TEF} = +165^{\circ}\text{C}$ , typ). The TEF bit also indicates that the IC has turned off all drivers to avoid overheating. The IC automatically turns the drivers back on when the IC temperature decreases to less than  $T_{TEF} - T_{HYS}$ . The TEF data are held in the TEF holder latch until the TEF data are loaded into the common shift register by the rising edge of LAT. If the IC temperature falls below  $T_{TEF} - T_{HYS}$  when LAT goes high, the TEF data in the TEF holder become '0'. If the IC temperature is not below  $T_{TEF} - T_{HYS}$  when LAT goes high, then the TEF data remain '1'. [Table 5](#) shows a truth table for LOD/LSD and TEF. [Figure 36](#) to [Figure 39](#) show different examples of LOD/LSD/TEF operation.

**Table 5. LOD/LSD/TEF Truth Table**

| SID DATA | CONDITION  |  |  |
|----------|--|--|--|
|          | LED OPEN DETECTION<br>(LOD, Voltage Select Data =<br>0h to 3h)   | LED SHORT DETECTION<br>(LSD, Voltage Select Data = 4h to 7h)   | THERMAL ERROR FLAG (TEF)   |
| 0        | LED is not open or the output is off ( $V_{OUTRn/Gn/Bn}$ is greater than the voltage selected by the detection voltage select bit in the control data latch)   | LED is not shorted or the output is off ( $V_{OUTRn/Gn/Bn}$ is less than or equal to the voltage selected by the detection voltage select bit in the control data latch) | Junction temperature is lower than the detect temperature ( $T_{TEF}$ ) before TEF is undetected or the detect temperature ( $T_{TEF} - T_{HYS}$ ) after TEF is detected |
| 1        | LED is open or shorted to GND ( $V_{OUTRn/Gn/Bn}$ is less than or equal to the voltage selected by the detection voltage select bit in the control data latch) | LED terminal is short or $OUTn$ is short to higher voltage ( $V_{OUTn}$ is greater than The selected voltage by detection voltage select bit in the control data latch)  | Junction temperature is higher than the detect temperature ( $T_{TEF}$ )   |

## THERMAL SHUTDOWN (TSD)

The thermal shutdown (TSD) function turns off all constant-current outputs when the IC junction temperature ( $T_j$ ) exceeds the temperature threshold ( $T_{TEF} = +165^{\circ}\text{C}$ , typ). The outputs remain disabled as long as the over-temperature condition exists. The outputs are turned on again after the IC junction temperature drops below ( $T_{TEF} - T_{HYS}$ ).

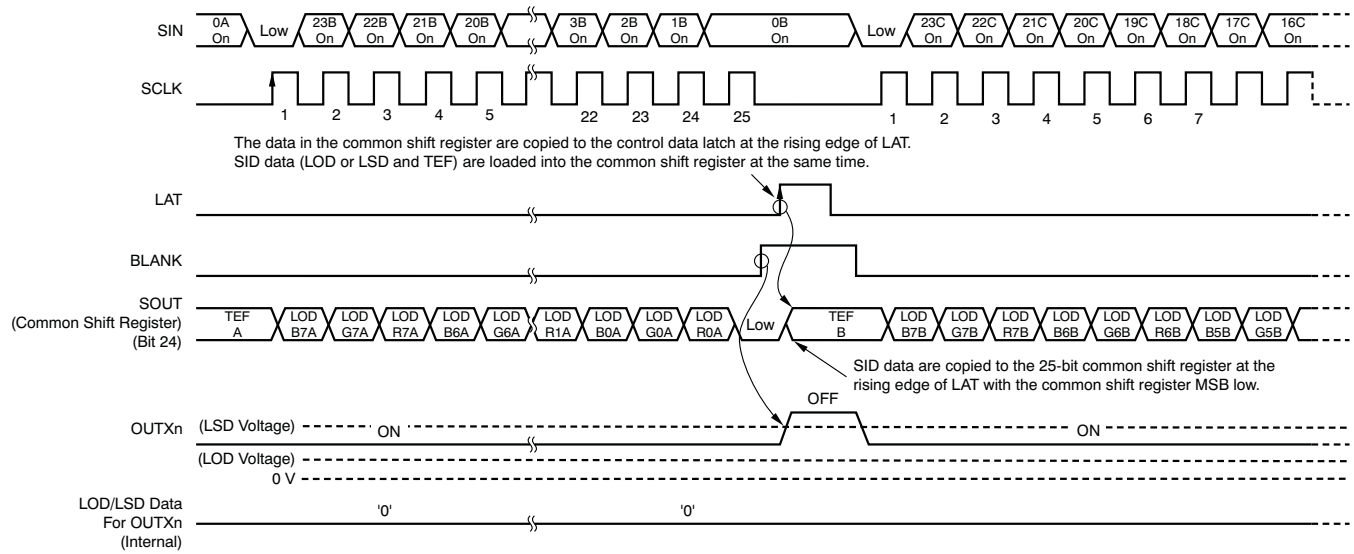
## NOISE REDUCTION

Large surge currents may flow through the IC and the board on which the device is mounted if all 24 LED channels turn on simultaneously when BLANK goes low. These large current surges could induce detrimental noise and electromagnetic interference (EMI) into other circuits. The TLC5952 turns the LED channels on in a series delay to provide a circuit soft-start feature.

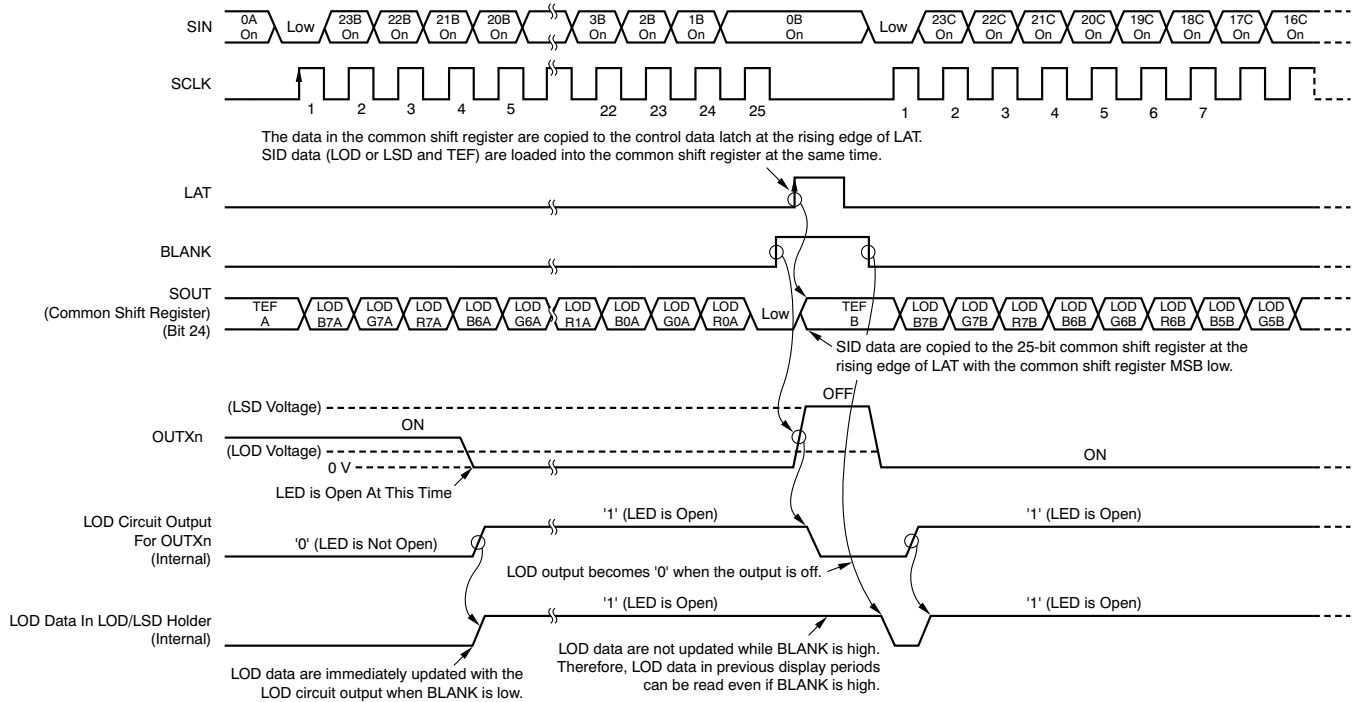
A small delay circuit is implemented between each output. When all bits of the on/off data latch are set to '1', each constant-current output turns on in order (OUTR0, OUTG0, OUTB0, OUTR1, OUTG1, OUTB1, OUTR2-OUTB6, OUTR7, OUTG7, and OUTB7) with a small delay between each output after BLANK goes low or LAT goes high; see [Figure 34](#). Both turn-on and turn-off are delayed.

## CAPACITOR SELECTION

Connect at least one 10-nF ceramic capacitor as close as possible between the  $V_{CC}$  pin and ground. Additional capacitors are needed on the LED power supply to reduce ripple on the LED power supply to a minimum.



**Figure 36. LOD/LSD/TEF Operation (No LED Error)**



**Figure 37. LOD/LSD/TEF Operation (LED Open Error)**



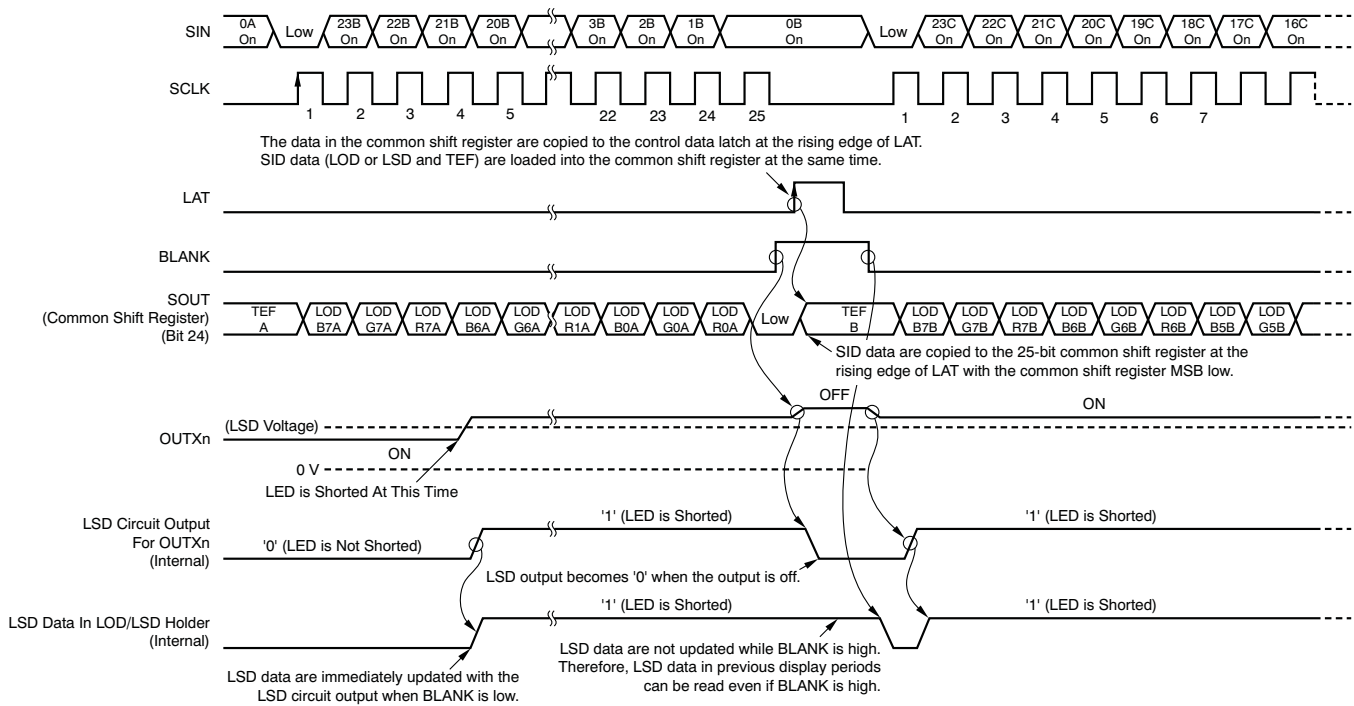


Figure 38. LOD/LSD/TEF Operation (LED Short Error)

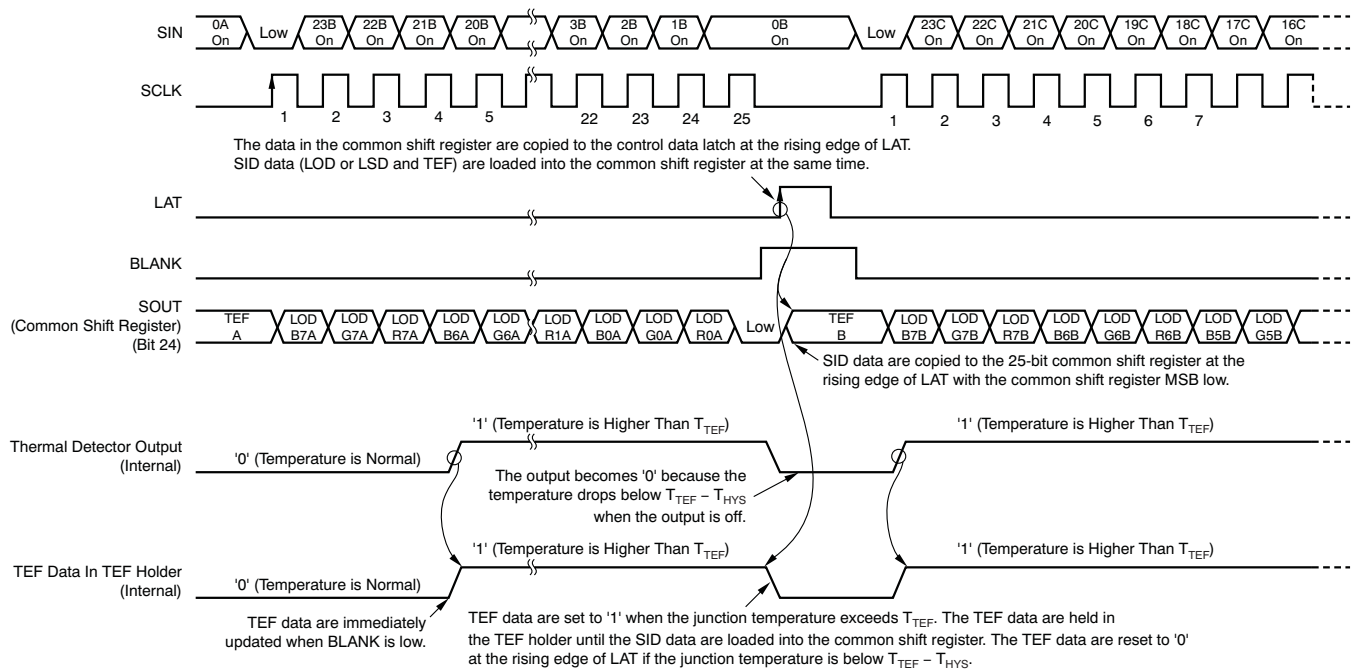


Figure 39. LOD/LSD/TEF Operation (Thermal Error)

**PACKAGING INFORMATION**

| Orderable Device | Status <sup>(1)</sup> | Package Type | Package Drawing | Pins | Package Qty | Eco Plan <sup>(2)</sup> | Lead/Ball Finish | MSL Peak Temp <sup>(3)</sup> |
|------------------|-----------------------|--------------|-----------------|------|-------------|-------------------------|------------------|------------------------------|
| TLC5952DAP       | ACTIVE                | HTSSOP       | DAP             | 32   | 46          | Green (RoHS & no Sb/Br) | CU NIPDAU        | Level-3-260C-168 HR          |
| TLC5952DAPR      | ACTIVE                | HTSSOP       | DAP             | 32   | 2000        | Green (RoHS & no Sb/Br) | CU NIPDAU        | Level-3-260C-168 HR          |

<sup>(1)</sup> The marketing status values are defined as follows:

**ACTIVE:** Product device recommended for new designs.

**LIFEBUY:** TI has announced that the device will be discontinued, and a lifetime-buy period is in effect.

**NRND:** Not recommended for new designs. Device is in production to support existing customers, but TI does not recommend using this part in a new design.

**PREVIEW:** Device has been announced but is not in production. Samples may or may not be available.

**OBsolete:** TI has discontinued the production of the device.

<sup>(2)</sup> Eco Plan - The planned eco-friendly classification: Pb-Free (RoHS), Pb-Free (RoHS Exempt), or Green (RoHS & no Sb/Br) - please check <http://www.ti.com/productcontent> for the latest availability information and additional product content details.

**TBD:** The Pb-Free/Green conversion plan has not been defined.

**Pb-Free (RoHS):** TI's terms "Lead-Free" or "Pb-Free" mean semiconductor products that are compatible with the current RoHS requirements for all 6 substances, including the requirement that lead not exceed 0.1% by weight in homogeneous materials. Where designed to be soldered at high temperatures, TI Pb-Free products are suitable for use in specified lead-free processes.

**Pb-Free (RoHS Exempt):** This component has a RoHS exemption for either 1) lead-based flip-chip solder bumps used between the die and package, or 2) lead-based die adhesive used between the die and leadframe. The component is otherwise considered Pb-Free (RoHS compatible) as defined above.

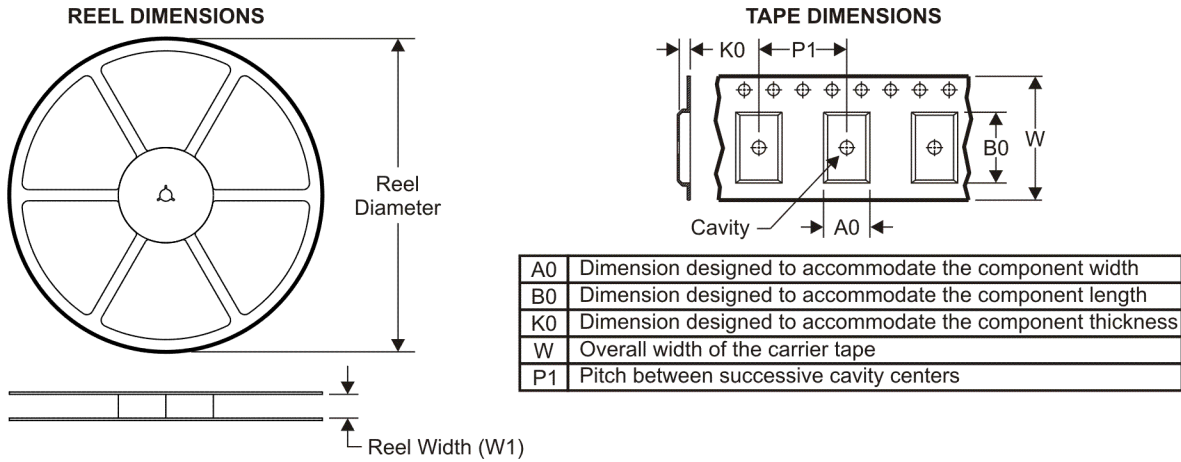
**Green (RoHS & no Sb/Br):** TI defines "Green" to mean Pb-Free (RoHS compatible), and free of Bromine (Br) and Antimony (Sb) based flame retardants (Br or Sb do not exceed 0.1% by weight in homogeneous material)

<sup>(3)</sup> MSL, Peak Temp. -- The Moisture Sensitivity Level rating according to the JEDEC industry standard classifications, and peak solder temperature.

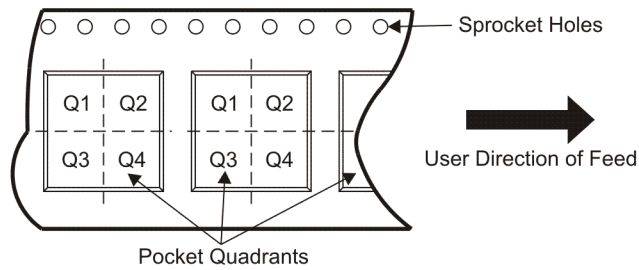
**Important Information and Disclaimer:**The information provided on this page represents TI's knowledge and belief as of the date that it is provided. TI bases its knowledge and belief on information provided by third parties, and makes no representation or warranty as to the accuracy of such information. Efforts are underway to better integrate information from third parties. TI has taken and continues to take reasonable steps to provide representative and accurate information but may not have conducted destructive testing or chemical analysis on incoming materials and chemicals. TI and TI suppliers consider certain information to be proprietary, and thus CAS numbers and other limited information may not be available for release.

In no event shall TI's liability arising out of such information exceed the total purchase price of the TI part(s) at issue in this document sold by TI to Customer on an annual basis.

## TAPE AND REEL INFORMATION



### QUADRANT ASSIGNMENTS FOR PIN 1 ORIENTATION IN TAPE



\*All dimensions are nominal

| Device      | Package Type | Package Drawing | Pins | SPQ  | Reel Diameter (mm) | Reel Width W1 (mm) | A0 (mm) | B0 (mm) | K0 (mm) | P1 (mm) | W (mm) | Pin1 Quadrant |
|-------------|--------------|-----------------|------|------|--------------------|--------------------|---------|---------|---------|---------|--------|---------------|
| TLC5952DAPR | HTSSOP       | DAP             | 32   | 2000 | 330.0              | 24.4               | 8.6     | 11.5    | 1.6     | 12.0    | 24.0   | Q1            |

**TAPE AND REEL BOX DIMENSIONS**



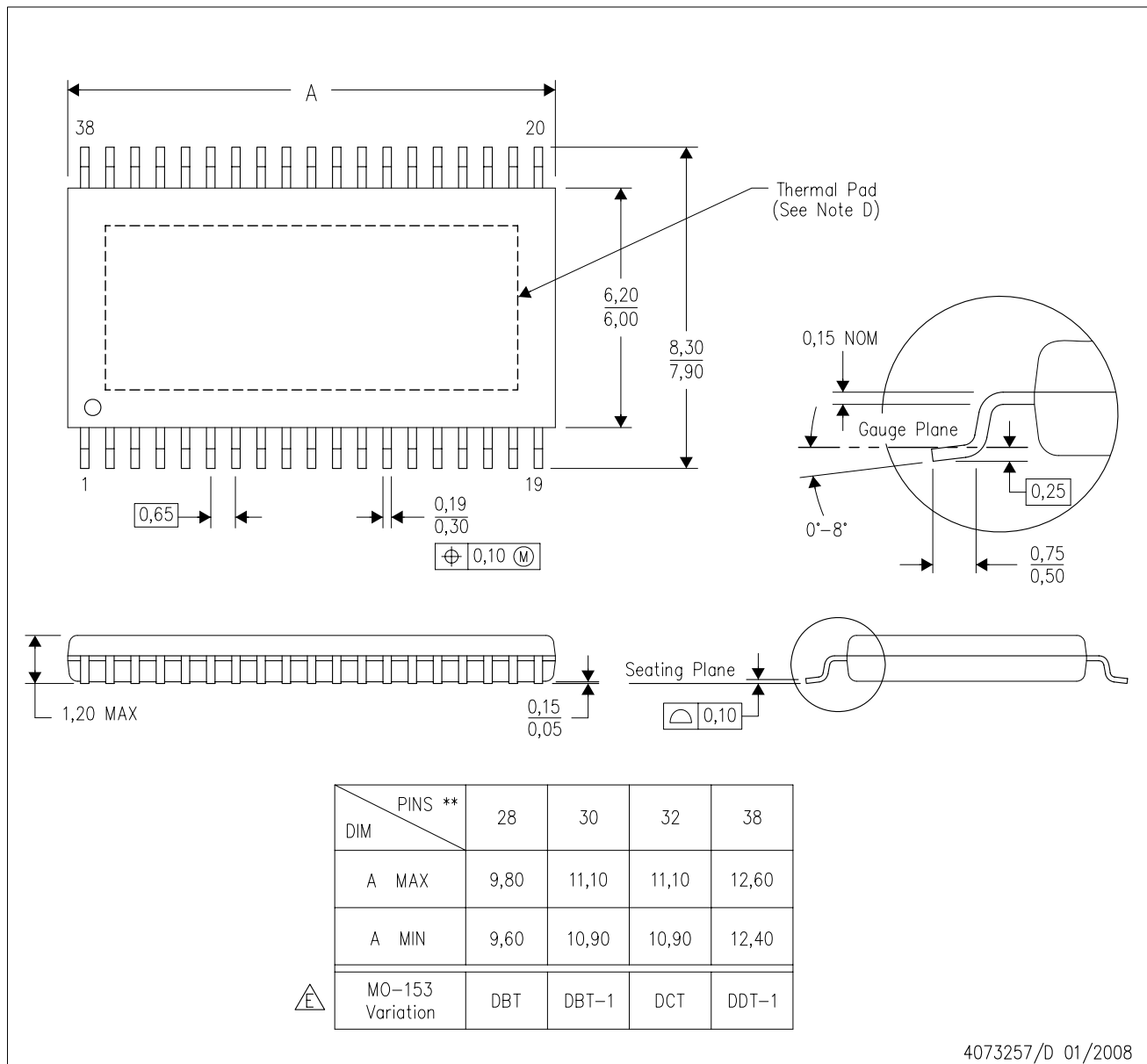
\*All dimensions are nominal

| Device      | Package Type | Package Drawing | Pins | SPQ  | Length (mm) | Width (mm) | Height (mm) |
|-------------|--------------|-----------------|------|------|-------------|------------|-------------|
| TLC5952DAPR | HTSSOP       | DAP             | 32   | 2000 | 346.0       | 346.0      | 41.0        |

# MECHANICAL DATA

DAP (R-PDSO-G\*\*) 38 PINS SHOWN

PowerPAD™ PLASTIC SMALL-OUTLINE PACKAGE



4073257/D 01/2008

- NOTES:
- A. All linear dimensions are in millimeters.
  - B. This drawing is subject to change without notice.
  - C. Body dimensions do not include mold flash or protrusion. Mold flash and protrusion shall not exceed 0.15 per side.
  - D. This package is designed to be soldered to a thermal pad on the board. Refer to Technical Brief, PowerPad Thermally Enhanced Package, Texas Instruments Literature No. SLMA002 for information regarding recommended board layout. This document is available at [www.ti.com](http://www.ti.com) <<http://www.ti.com>>.
- Falls within JEDEC MO-153, except 30 pin body length.

PowerPAD is a trademark of Texas Instruments.

DAP (R-PDSO-G32)

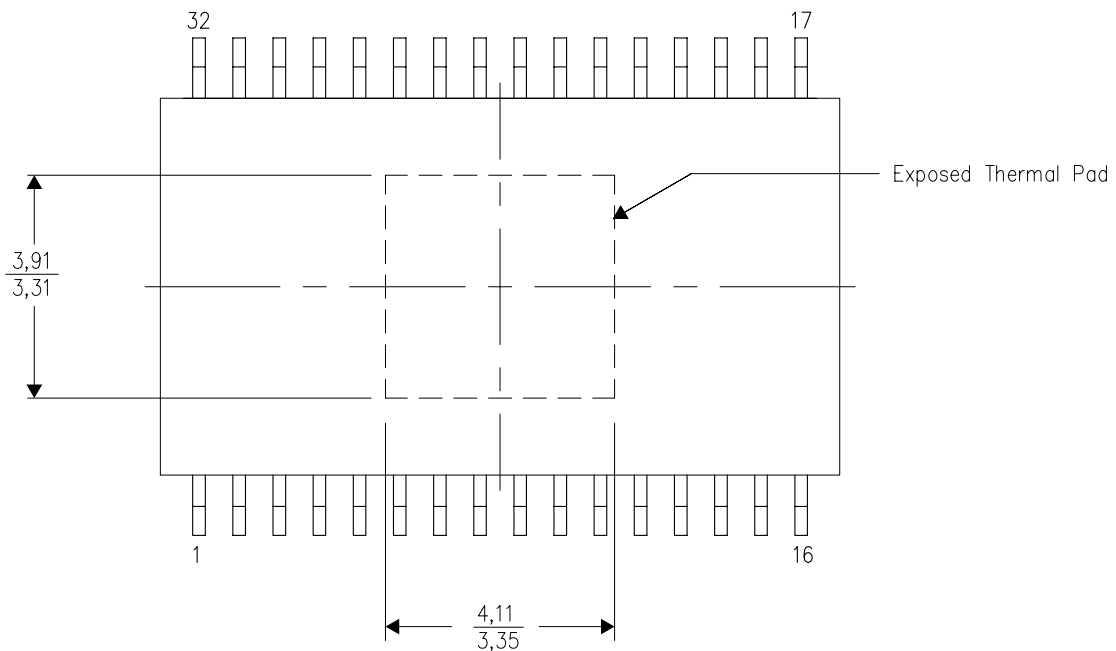
PowerPAD™ PLASTIC SMALL OUTLINE

## THERMAL INFORMATION

This PowerPAD™ package incorporates an exposed thermal pad that is designed to be attached to a printed circuit board (PCB). The thermal pad must be soldered directly to the PCB. After soldering, the PCB can be used as a heatsink. In addition, through the use of thermal vias, the thermal pad can be attached directly to the appropriate copper plane shown in the electrical schematic for the device, or alternatively, can be attached to a special heatsink structure designed into the PCB. This design optimizes the heat transfer from the integrated circuit (IC).

For additional information on the PowerPAD package and how to take advantage of its heat dissipating abilities, refer to Technical Brief, PowerPAD Thermally Enhanced Package, Texas Instruments Literature No. SLMA002 and Application Brief, PowerPAD Made Easy, Texas Instruments Literature No. SLMA004. Both documents are available at [www.ti.com](http://www.ti.com).

The exposed thermal pad dimensions for this package are shown in the following illustration.



Top View

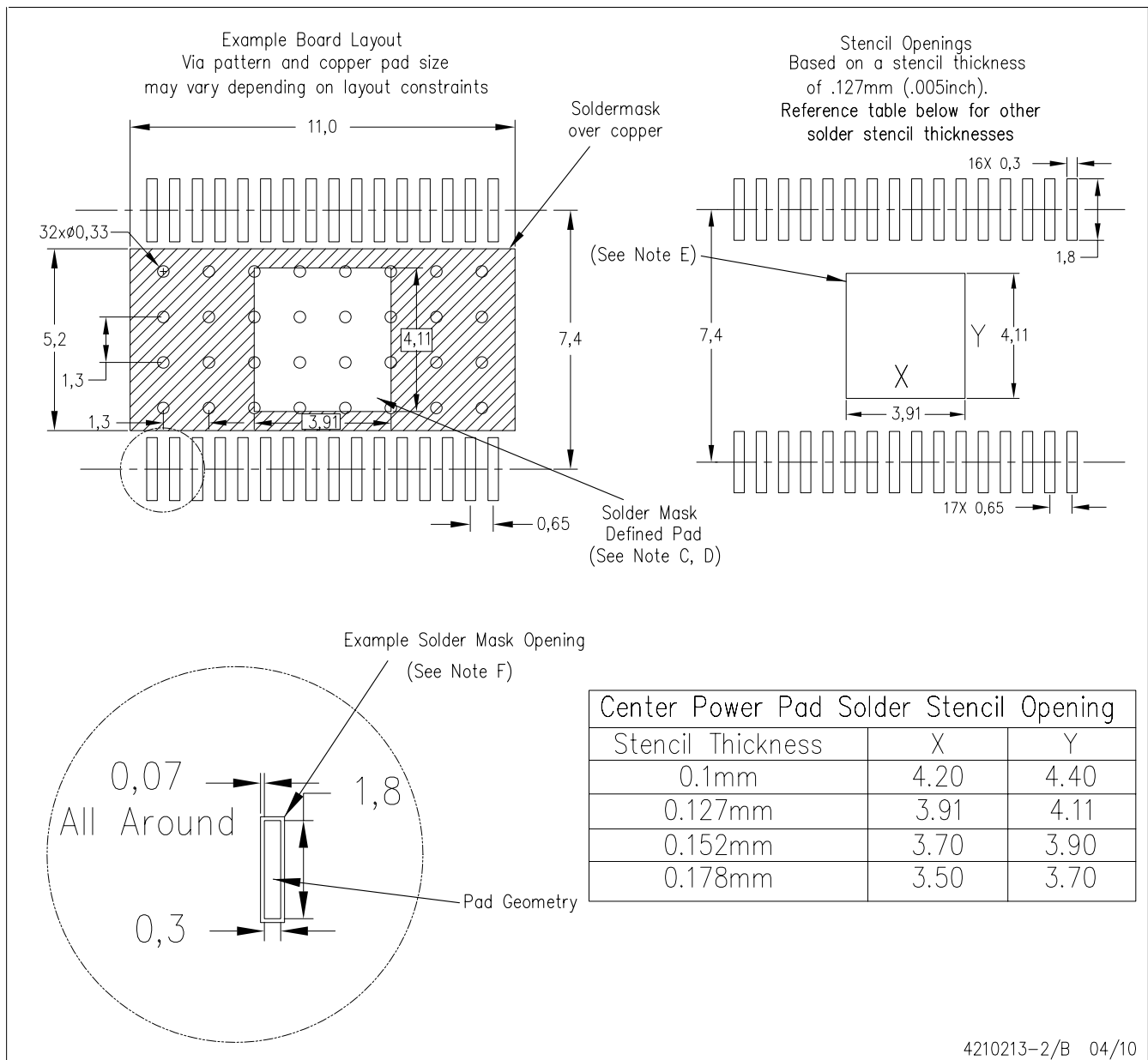
Exposed Thermal Pad Dimensions

4206319-3/1 07/11

NOTE: All linear dimensions are in millimeters

PowerPAD is a trademark of Texas Instruments.

## DAP (R-PDSO-G32) PowerPAD™ PLASTIC SMALL OUTLINE PACKAGE



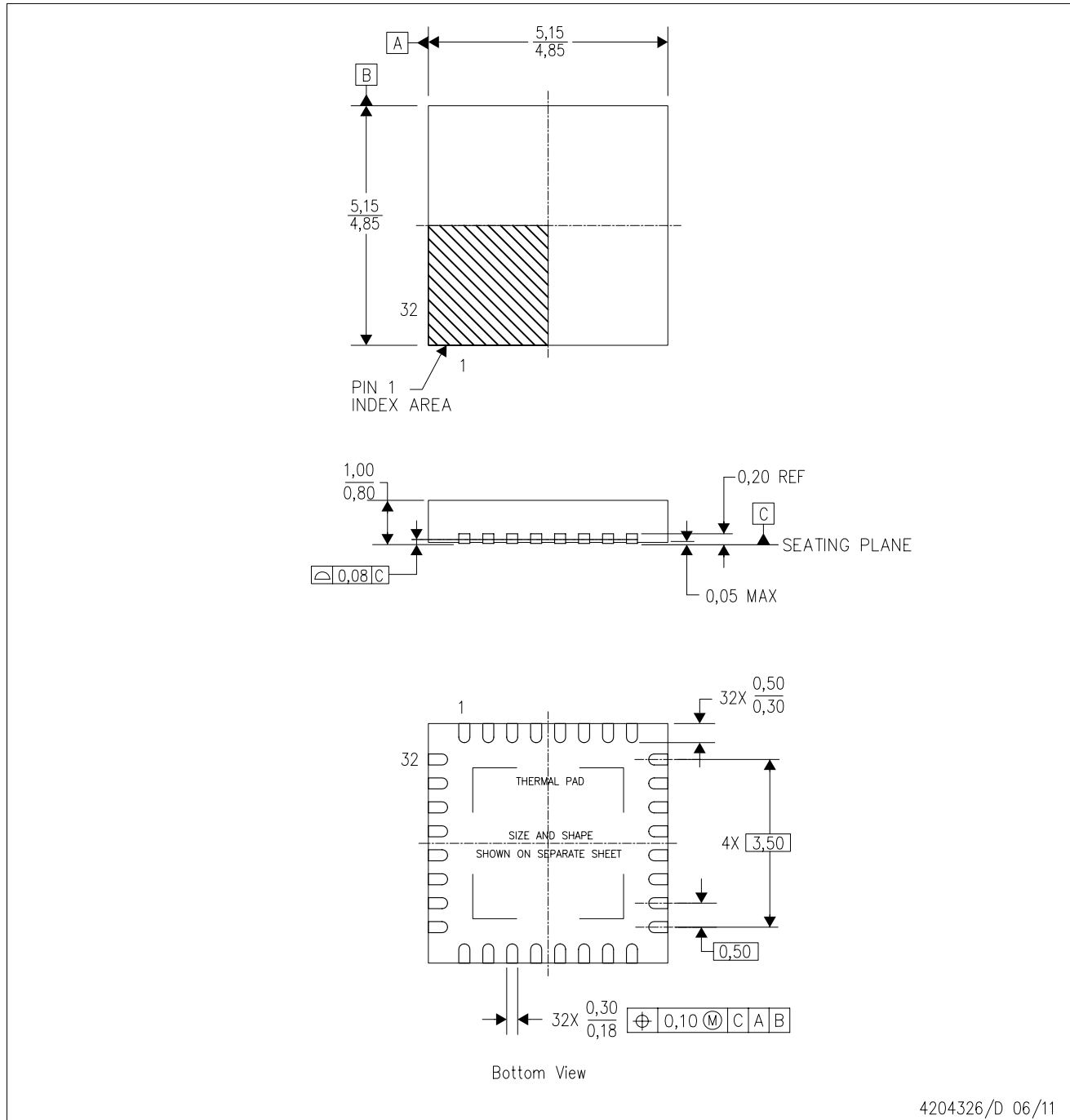
- NOTES:
- All linear dimensions are in millimeters.
  - This drawing is subject to change without notice.
  - Customers should place a note on the circuit board fabrication drawing not to alter the center solder mask defined pad.
  - This package is designed to be soldered to a thermal pad on the board. Refer to Technical Brief, PowerPad Thermally Enhanced Package, Texas Instruments Literature No. SLMA002, SLMA004, and also the Product Data Sheets for specific thermal information, via requirements, and recommended board layout. These documents are available at [www.ti.com](http://www.ti.com) <<http://www.ti.com>>. Publication IPC-7351 is recommended for alternate designs.
  - Laser cutting apertures with trapezoidal walls and also rounding corners will offer better paste release. Customers should contact their board assembly site for stencil design recommendations. Example stencil design based on a 50% volumetric metal load solder paste. Refer to IPC-7525 for other stencil recommendations.
  - Contact the board fabrication site for recommended soldermask tolerances.

PowerPAD is a trademark of Texas Instruments.

# MECHANICAL DATA

RHB (S-PVQFN-N32)

PLASTIC QUAD FLATPACK NO-LEAD



4204326/D 06/11

- NOTES:
- All linear dimensions are in millimeters. Dimensioning and tolerancing per ASME Y14.5M-1994.
  - This drawing is subject to change without notice.
  - QFN (Quad Flatpack No-Lead) Package configuration.
  - The package thermal pad must be soldered to the board for thermal and mechanical performance.
  - See the additional figure in the Product Data Sheet for details regarding the exposed thermal pad features and dimensions.
  - Falls within JEDEC MO-220.



## IMPORTANT NOTICE

Texas Instruments Incorporated and its subsidiaries (TI) reserve the right to make corrections, modifications, enhancements, improvements, and other changes to its products and services at any time and to discontinue any product or service without notice. Customers should obtain the latest relevant information before placing orders and should verify that such information is current and complete. All products are sold subject to TI's terms and conditions of sale supplied at the time of order acknowledgment.

TI warrants performance of its hardware products to the specifications applicable at the time of sale in accordance with TI's standard warranty. Testing and other quality control techniques are used to the extent TI deems necessary to support this warranty. Except where mandated by government requirements, testing of all parameters of each product is not necessarily performed.

TI assumes no liability for applications assistance or customer product design. Customers are responsible for their products and applications using TI components. To minimize the risks associated with customer products and applications, customers should provide adequate design and operating safeguards.

TI does not warrant or represent that any license, either express or implied, is granted under any TI patent right, copyright, mask work right, or other TI intellectual property right relating to any combination, machine, or process in which TI products or services are used. Information published by TI regarding third-party products or services does not constitute a license from TI to use such products or services or a warranty or endorsement thereof. Use of such information may require a license from a third party under the patents or other intellectual property of the third party, or a license from TI under the patents or other intellectual property of TI.

Reproduction of TI information in TI data books or data sheets is permissible only if reproduction is without alteration and is accompanied by all associated warranties, conditions, limitations, and notices. Reproduction of this information with alteration is an unfair and deceptive business practice. TI is not responsible or liable for such altered documentation. Information of third parties may be subject to additional restrictions.

Resale of TI products or services with statements different from or beyond the parameters stated by TI for that product or service voids all express and any implied warranties for the associated TI product or service and is an unfair and deceptive business practice. TI is not responsible or liable for any such statements.

TI products are not authorized for use in safety-critical applications (such as life support) where a failure of the TI product would reasonably be expected to cause severe personal injury or death, unless officers of the parties have executed an agreement specifically governing such use. Buyers represent that they have all necessary expertise in the safety and regulatory ramifications of their applications, and acknowledge and agree that they are solely responsible for all legal, regulatory and safety-related requirements concerning their products and any use of TI products in such safety-critical applications, notwithstanding any applications-related information or support that may be provided by TI. Further, Buyers must fully indemnify TI and its representatives against any damages arising out of the use of TI products in such safety-critical applications.

TI products are neither designed nor intended for use in military/aerospace applications or environments unless the TI products are specifically designated by TI as military-grade or "enhanced plastic." Only products designated by TI as military-grade meet military specifications. Buyers acknowledge and agree that any such use of TI products which TI has not designated as military-grade is solely at the Buyer's risk, and that they are solely responsible for compliance with all legal and regulatory requirements in connection with such use.

TI products are neither designed nor intended for use in automotive applications or environments unless the specific TI products are designated by TI as compliant with ISO/TS 16949 requirements. Buyers acknowledge and agree that, if they use any non-designated products in automotive applications, TI will not be responsible for any failure to meet such requirements.

Following are URLs where you can obtain information on other Texas Instruments products and application solutions:

### Products

|                             |  |
|-----------------------------|--|
| Audio                       | <a href="http://www.ti.com/audio">www.ti.com/audio</a>             |
| Amplifiers                  | <a href="http://amplifier.ti.com">amplifier.ti.com</a>             |
| Data Converters             | <a href="http://dataconverter.ti.com">dataconverter.ti.com</a>     |
| DLP® Products               | <a href="http://www.dlp.com">www.dlp.com</a>                       |
| DSP                         | <a href="http://dsp.ti.com">dsp.ti.com</a>                         |
| Clocks and Timers           | <a href="http://www.ti.com/clocks">www.ti.com/clocks</a>           |
| Interface                   | <a href="http://interface.ti.com">interface.ti.com</a>             |
| Logic                       | <a href="http://logic.ti.com">logic.ti.com</a>                     |
| Power Mgmt                  | <a href="http://power.ti.com">power.ti.com</a>                     |
| Microcontrollers            | <a href="http://microcontroller.ti.com">microcontroller.ti.com</a> |
| RFID                        | <a href="http://www.ti-rfid.com">www.ti-rfid.com</a>               |
| RF/IF and ZigBee® Solutions | <a href="http://www.ti.com/lprf">www.ti.com/lprf</a>               |

### Applications

|                               |  |
|-------------------------------|--|
| Communications and Telecom    | <a href="http://www.ti.com/communications">www.ti.com/communications</a>                 |
| Computers and Peripherals     | <a href="http://www.ti.com/computers">www.ti.com/computers</a>                           |
| Consumer Electronics          | <a href="http://www.ti.com/consumer-apps">www.ti.com/consumer-apps</a>                   |
| Energy and Lighting           | <a href="http://www.ti.com/energy">www.ti.com/energy</a>                                 |
| Industrial                    | <a href="http://www.ti.com/industrial">www.ti.com/industrial</a>                         |
| Medical                       | <a href="http://www.ti.com/medical">www.ti.com/medical</a>                               |
| Security                      | <a href="http://www.ti.com/security">www.ti.com/security</a>                             |
| Space, Avionics and Defense   | <a href="http://www.ti.com/space-avionics-defense">www.ti.com/space-avionics-defense</a> |
| Transportation and Automotive | <a href="http://www.ti.com/automotive">www.ti.com/automotive</a>                         |
| Video and Imaging             | <a href="http://www.ti.com/video">www.ti.com/video</a>                                   |
| Wireless                      | <a href="http://www.ti.com/wireless-apps">www.ti.com/wireless-apps</a>                   |

TI E2E Community Home Page

[e2e.ti.com](http://e2e.ti.com)

Mailing Address: Texas Instruments, Post Office Box 655303, Dallas, Texas 75265  
Copyright © 2011, Texas Instruments Incorporated