
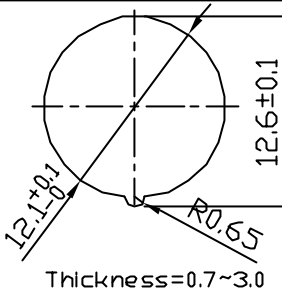
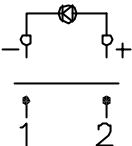
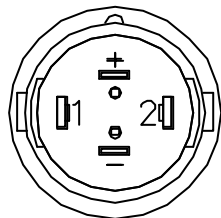
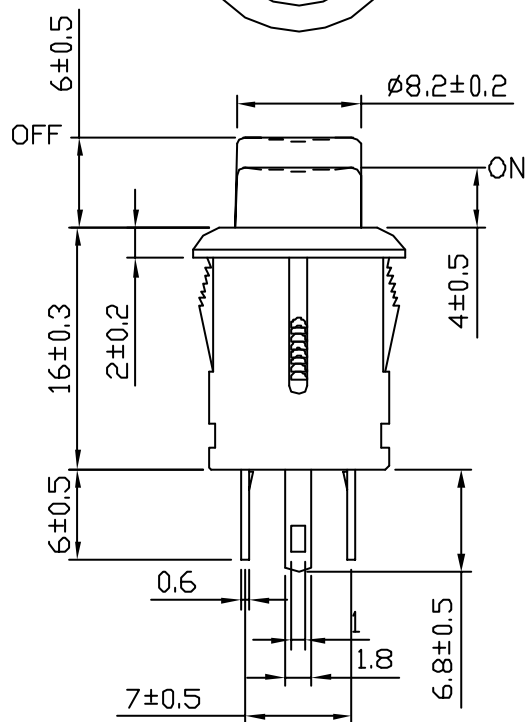
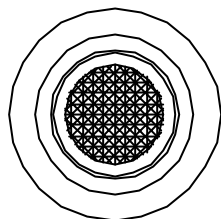


Rating	3A 125VAC 1.5A 250VAC		Mounting Hole 	Circuit Diagram <div style="border: 1px solid red; padding: 2px; display: inline-block;">LED Rating Red: If=20mA, Vf=1.7V</div> 
	Contact Resistance	50m ohm Max.		
	Insulation Resistance	DC 500V 100M ohm Min.		
	Dielectric Strength	AC 1000V 1 minute		
	Operation Temperature	-0°C ~ 65°C		
	Switch Function	4P SPST ON-OFF (LED independent)		



***MATERIAL:**

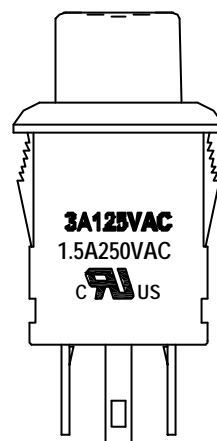
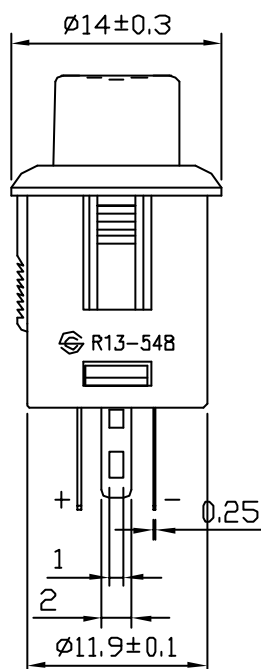
Frame: Black, Nylon 66 (94-V2)

Actuator: Red, PC (94-V2)


Terminals: Silver plated, Copper alloy

Contacts: Silver plated, Copper alloy

Printed: None



C8\R13\R13-548BL-05(1830811)

									△
									△
Date	Name	Description							NO
Drawn	Checked	Approved	SCI BOM No.	1830811	Model Name	PUSH SWITCH			
曹 盈 芳	王 佰 山	李 景 煌	Customer No.	112-R13-548BL-BRR	Model No.	R13-548BL-05	REV.		
02/17/'09	02/18/'09	02/19/'09	Unit	mm	 SHIN CHIN INDUSTRIAL CO., LTD.				0