

# 660 series

## Power toggle switches - metal lever

### Specifications

A

#### ELECTRICAL SPECIFICATIONS

UG1410A

- Max. current/voltage rating with resistive load : 10A 30VDC
- Decrease by 50 % for inductive load
- Initial contact resistance : 10 mΩ max.
- Insulation resistance : 1.000 MΩ min. at 500VDC
- Dielectric strength :
  - 2.500 Vrms 50 Hz min. between terminals
  - 2.500 Vrms 50 Hz min. between terminals and frame
- Electrical life : 10.000 cycles at full load

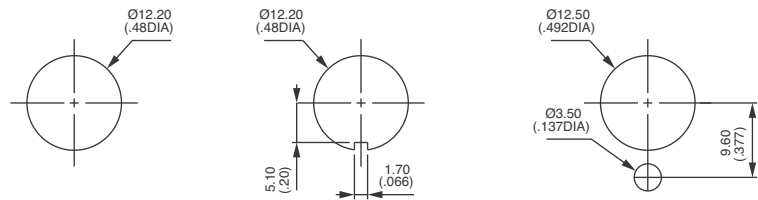
#### MATERIALS

- Case : melamine/polyester
- Actuator : brass, nickel plated
- Bushing : brass, nickel plated
- Contacts : silver

#### GENERAL SPECIFICATIONS

- Torque : 1,50 Nm (1.10 Ft.lb) max. applied to nut
- Panel thickness : 4,5 mm (.177) max.
- Operating temperature : -20°C to +55°C

#### PANEL CUT-OUT



#### ABOUT THIS SERIES

**Dimensions** : first dimensions are in mm while inches are shown as bracketed numbers.



**Sealing boots** are available to protect the switches against dust and water. They are presented in section H.



**Mounting accessories** : standard hardware supplied with all models : 1 hex nut U166, 1 knurled nut U411 and 1 lockwasher U13. Standard and special hardware are presented in section I.



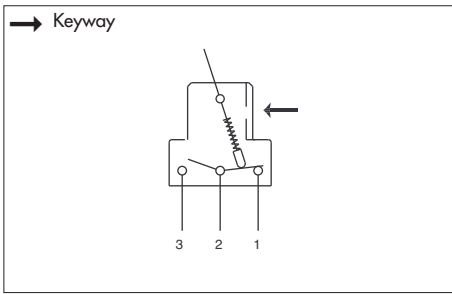
**Packaging unit** : 25 pieces per type.

The company reserves the right to change specifications without notice.

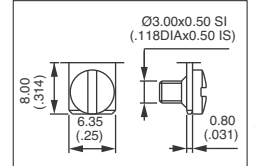
# 660 series

## Power toggle switches - metal lever

Four pole



- 2 and 3 maintained or momentary positions
- Screw terminals



MODEL  
STRUCTURE



### Four pole

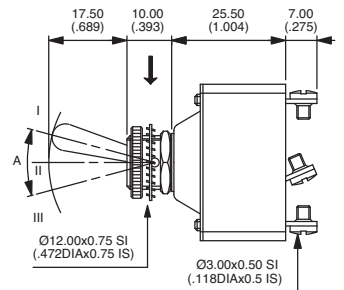
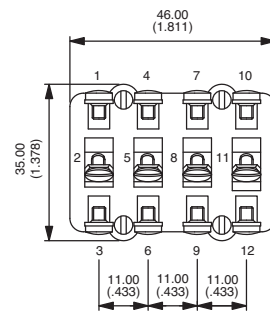


Model	Angle of throw (A)
661	20°
665	20°
666	20°
667	20°
668	20°
669	30°

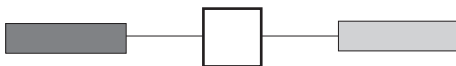
III	II	I
2-1*		2-3**
ON	-	OFF
MOM	-	ON
ON	-	ON
MOM	OFF	MOM
ON	OFF	MOM
ON	OFF	ON

\* (2-1) (5-4) (8-7) (11-10)    \*\* (2-3) (5-6) (8-9) (11-12)

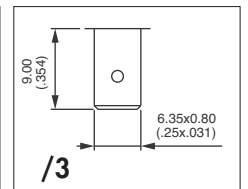
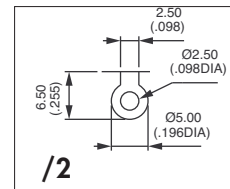
→ Keyway



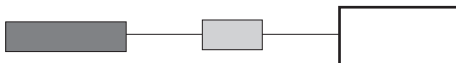
### TERMINAL OPTIONS



- /2 Solder lug terminals
- /3 Quick-connect terminals 6,35 x 0,8 (.250 x .031)



### OTHER OPTIONS



- T Tropicalized diallylphthalate case (-40°C to +85°C)
- LUXE Chrome plated lever and cap nut U117
- TK LUXE Front panel sealing by O-ring and sealing washer + options T and LUXE. See 600H series.
- G Black finish on bushing, lever and nuts. Includes tropicalization (option T)
- GK Front panel sealing by O-ring and sealing washer (as described in option TK LUXE) + option G