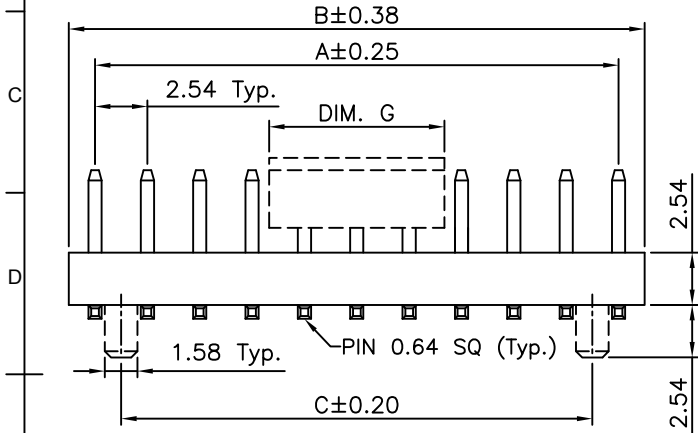
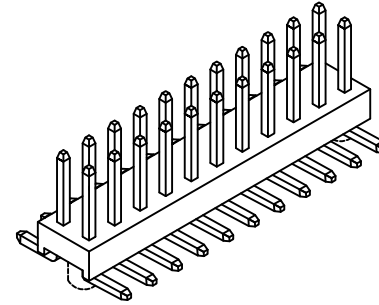
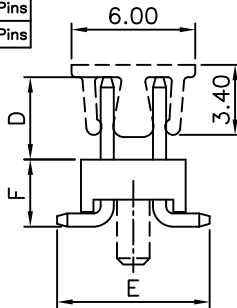


RECOMMENDED PCB LAYOUT



DIM. G	NOTE
5mm	02-06 Pins
8.50mm	08-40 Pins

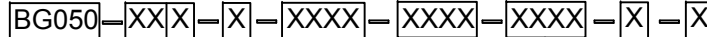


CONTACTS	DIMENSIONS		
	A	B	C
4	2.54	5.08	---
6	5.08	7.62	2.54
8	7.62	10.16	5.08
10	10.16	12.70	7.62
12	12.70	15.24	10.16
14	15.24	17.78	12.70
16	17.78	20.32	15.24
18	20.32	22.86	17.78
20	22.86	25.40	20.32
22	25.40	27.94	22.86
24	27.94	30.48	25.40
26	30.48	33.02	27.94
28	33.02	35.56	30.48
30	35.56	38.10	33.02
32	38.10	40.64	35.56
34	40.64	43.18	38.10
36	43.18	45.72	40.64
38	45.72	48.26	43.18
40	48.26	50.80	45.72
42	50.80	53.34	48.26
44	53.34	55.88	50.80
46	55.88	58.42	53.34
48	58.42	60.96	55.88
50	60.96	63.50	58.42
52	63.50	66.04	60.96
54	66.04	68.58	63.50
56	68.58	71.12	66.04
58	71.12	73.66	68.58
60	73.66	76.20	71.12
62	76.20	78.74	73.66
64	78.74	81.28	76.20
66	81.28	83.82	78.74
68	83.82	86.36	81.28
70	86.36	88.90	83.82
72	88.90	91.44	86.36
74	91.44	93.98	88.90
76	93.98	96.52	91.44
78	96.52	99.06	93.98
80	99.06	101.60	96.52

SPECIFICATIONS 规格

CURRENT RATING 电流额定值: 3.0 AMPERE
 INSULATION RESISTANCE 绝缘电阻值: 1000MΩ Min.
 DIELECTRIC WITHSTANDING 耐压: 600V AC
 CONTACT RESISTANCE 接触电阻值: 20mΩ Max.
 OPERATING TEMPERATURE 工作温度: -40°C TO +105°C
 CONTACT MATERIAL 端子物料: COPPER ALLOY
 CONTACT PLATING: GOLD/TIN OVER NICKEL
 INSULATOR MATERIAL 绝缘体物料:
 STANDARD 标准物料: POLYAMIDE 聚酰胺, NYLON 6T, UL 94-V0
 OPTIONS 可选物料: POLYESTER 聚酯, LCP, UL 94-V0
 SOLDERING PROCESS 可焊性:
 NYLON 6T (OPTION 可选物料) -
 IR REFLOW 回流焊: 260°C for 10 sec.
 WAVE 波峰焊: 230°C for 5-10 sec.
 MANUAL SOLDER 人工焊接: 350°C for 3-5sec
 LCP (STANDARD标准物料) -
 IR REFLOW 回流焊: 260°C for 10 sec.
 WAVE 波峰焊: 250°C for 5-10 sec
 MANUAL SOLDER 人工焊接: 350°C for 3-5 sec
 MATES WITH 配套之母座 (SUBJECT TO PIN LENGTH 在端子长度适合的条件下):
 BG120 BG140 BG150 BG151 BG160
 BG165 BG170 BG175 BG180 BG185
 BG190 BG195 BG200 BG210

Ordering Grid



No. of Contacts
04 to 80
 Contact Plating
 A = Gold Flash All Over
 B = Selective Gold Flash
 Contact Area/Tin On Tail
 C = Tin All Over
 G = 10µ" Gold Contact Area/Tin On Tail
 I = 30µ" Gold Contact Area/Tin On Tail
Standard = Gold Flash All Over

Locating Peg
0 = No Peg
1 = With Peg

Dimension D (1/100mm)
(Post Height)
Standard - 4.50mm = 0450
Standard - 6.50mm = 0650
Or specify Dimension D
e.g. 2.50mm = 0250
TOL.: ±0.2mm

Dimension E (1/100mm)
(Footprint Width)
Standard - 7.37mm = 0737
Or specify Dimension E
e.g. 2.50mm = 0250
TOL.: ±0.2mm

Insulator Material
L = LCP (Standard)
N = Nylon 6T

Packing Options
B = Tape and Reel with Cap (Standard)
D = Tube
E = Tube with Cap

Dimension F (1/100mm)
(PCB to Top of Insulator)
Standard - 3.50mm = 0350
Or specify Dimension F
e.g. 2.50mm = 0250
TOL.: ±0.2mm

REQUEST SAMPLES AND QUOTATION

By	LYH	CB	DR	ASE	ASE
DETAIL	DRAWING RELEASE	PACKING OPTIONS CHANGED	CHANGE TO SOLDER TEMP. INFORMATION	AMENDMENT TO STANDARD DIMENSIONS	DIMENSION ADDED
REV DATE	A 30/10/06	B 27/04/09	C 05/08/09	D 08/12/09	E 09/03/12



Tolerances (Except as noted)	Part Number:-	Date:-
Dimensions in mm	BG050	30 OCT 06
X. ± 0.30 X.° ± 5°	Description:-	
X.X ± 0.20 X.° ± 2°	2.54mm PITCH PIN HEADER, DUAL ROW, SURFACE MOUNT, VERTICAL	
X.XX ± 0.15 XX° ± 1°		
X.XXX ± 0.10 XXX° ± 0.5°		
Third Angle Projection	© THIS DRAWING IS CONFIDENTIAL AND MUST NOT BE COPIED OR DISCLOSED WITHOUT WRITTEN CONSENT	

GCT

www.globalconnectortechology.com

Scale NTS	Revision E	Material See Note	Drawn by LYH	E & OE	Sheet No. 1/1
-----------	------------	-------------------	--------------	--------	---------------