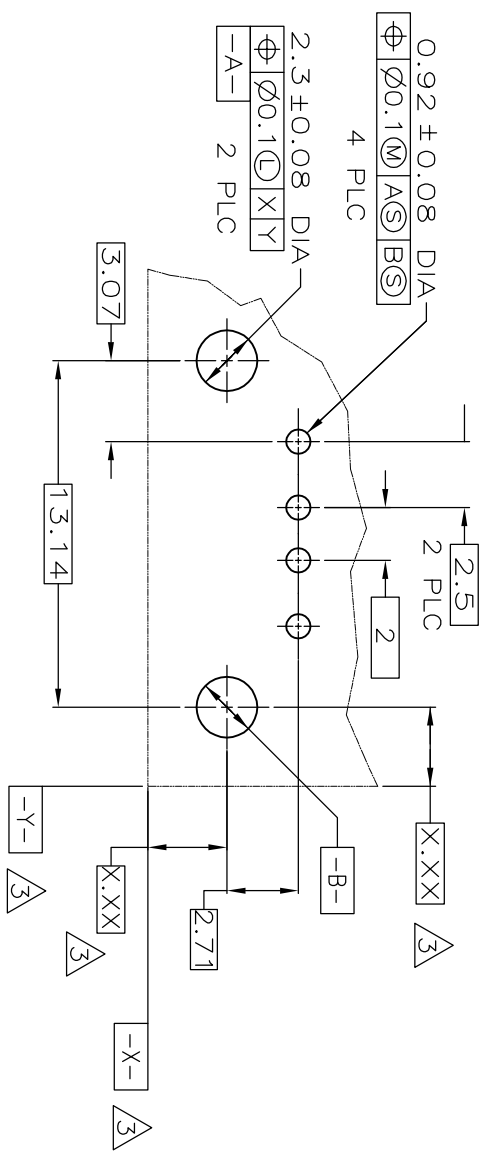
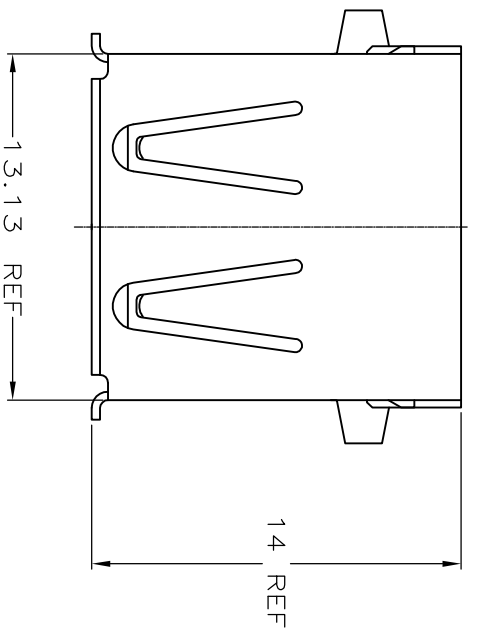
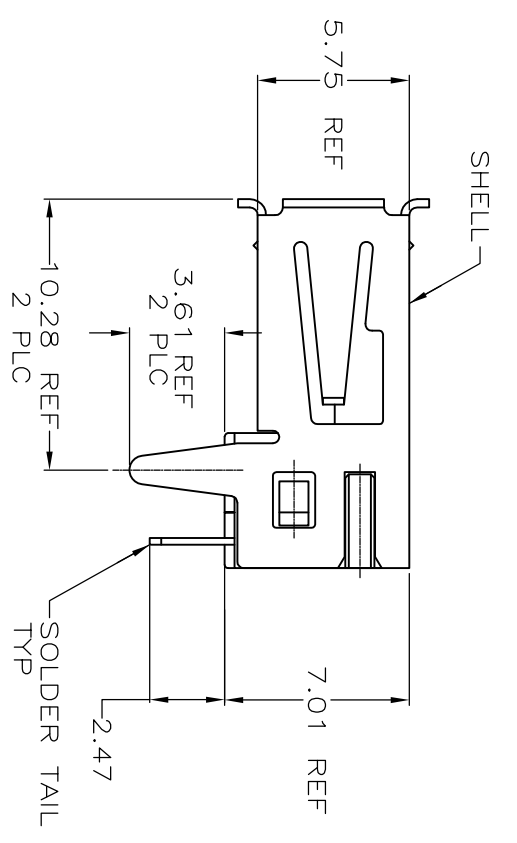
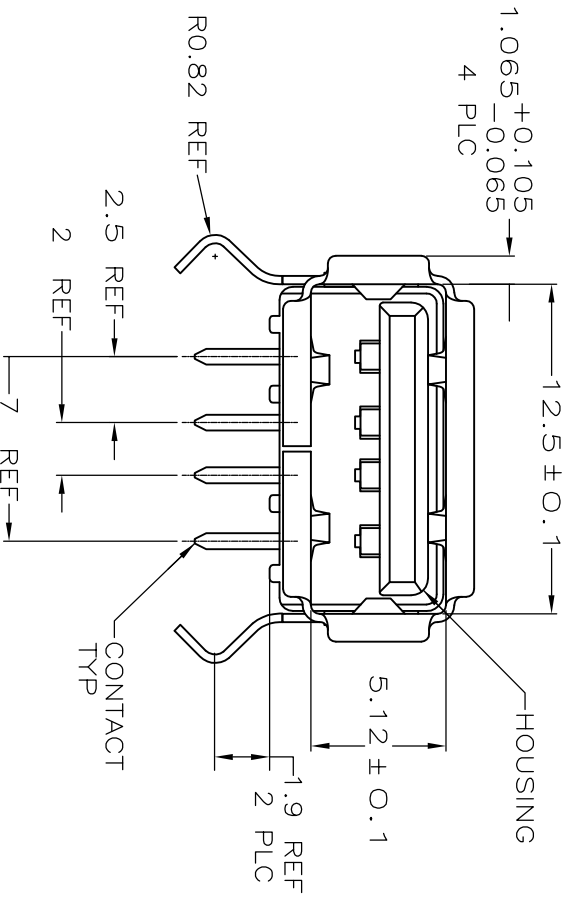


| REV | DESCRIPTION | DATE | BY | APP'D |
|-----|-------------|------|----|-------|
| 1 | | | | |



PC BOARD MOUNTING DIMENSIONS



▲ MATERIAL:
 SHELL & CONTACTS- COPPER ALLOY.
 HOUSING: UL 94V-0 RATED, THERMOPLASTIC, COLOR SEE TABLE.
 ▲ PLATING:
 CONTACTS: 0.076 μ m MINIMUM GOLD OVER 0.76 μ m MINIMUM PALLADIUM-NICKEL ON MATING AREA.
 3.8 μ m MINIMUM MATTE TIN ON SOLDER TAILS.
 BOTH OVER 1.27 μ m MINIMUM NICKEL.
 CONTACT ALTERNATE PLATING: 0.76 μ m MIN GOLD ON MATING AREA, 3.80 μ m MIN MATTE TIN ON SOLDER TAILS, BOTH OVER 1.27 μ m MIN NICKEL.
 SHELL: 2~5 μ m MINIMUM BRIGHT TIN
 ▲ DATUM AND BASIC DIMENSIONS ESTABLISHED BY CUSTOMER.
 ▲ RECOMMENDED PC BOARD THICKNESS OF 1.2.

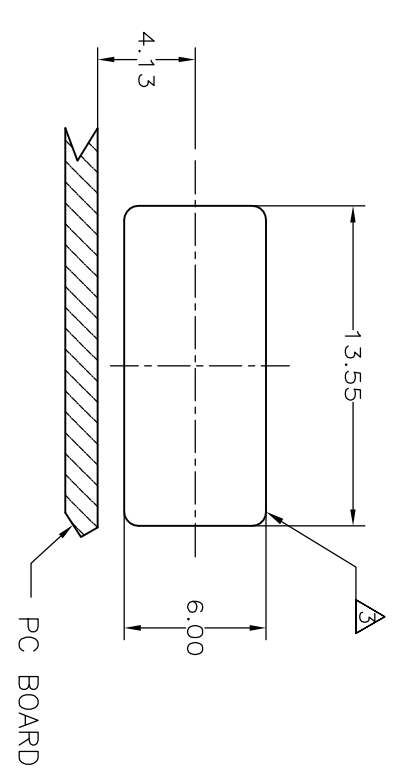
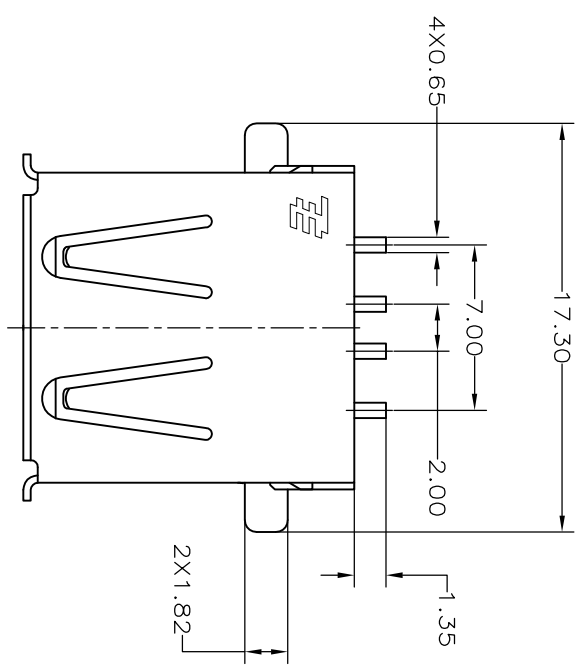
| | | |
|-----------------------------|---------------|-------------|
| NO | NATURAL | 292303-8 |
| HIGH TEMPERATURE COMPATIBLE | HOUSING COLOR | PART NUMBER |

| REV | DESCRIPTION | DATE | BY | APP'D |
|-----|-------------|------|----|-------|
| 1 | | | | |

| | | | | |
|-------|---|-----|--|--|
| ES 00 | P | LTR | | |
|-------|---|-----|--|--|

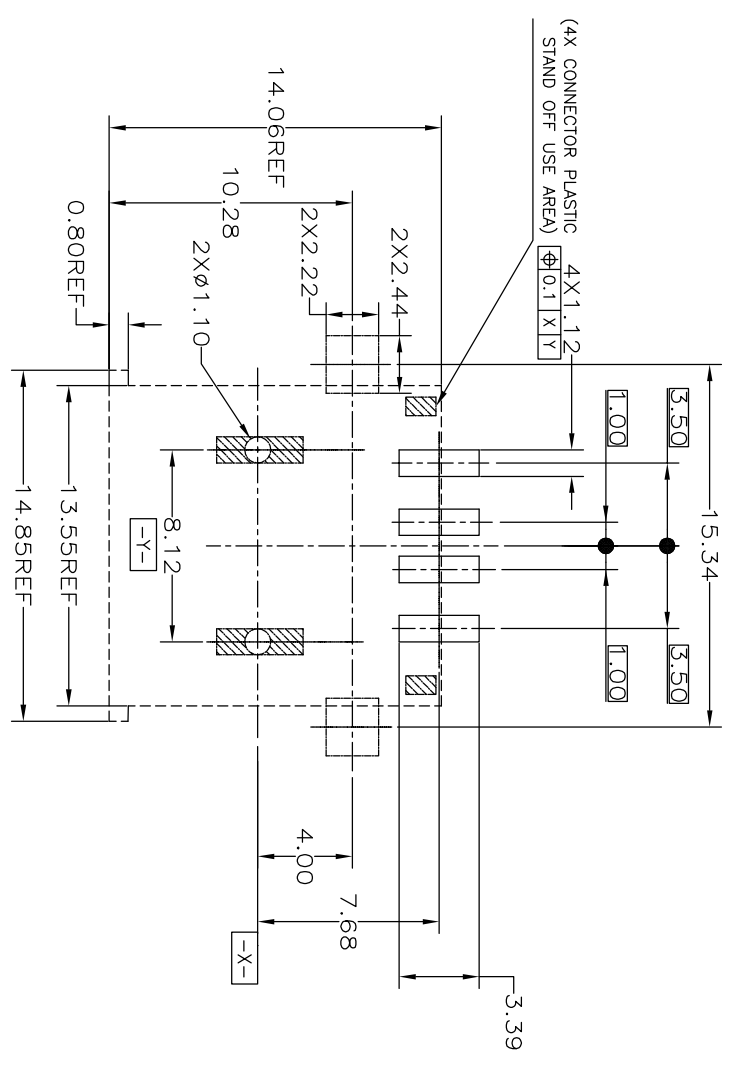
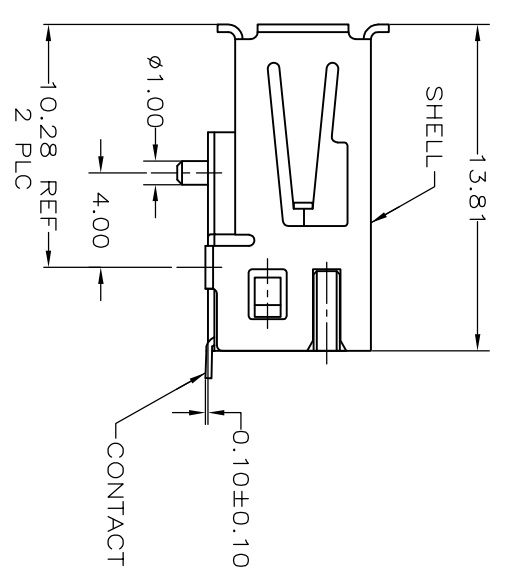
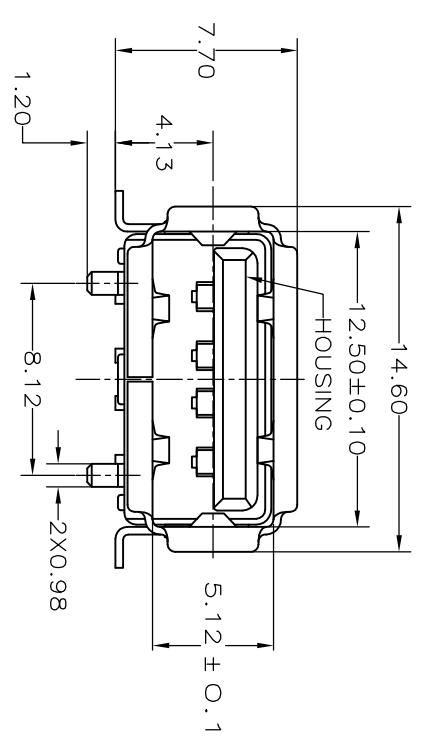
| | | | | | | | | |
|------------------|------------|-----------|-----------|-----------|-----------|-----------|-----------|-----------|
| NO | 220CT07 | MARTIN LI | 230CT07 | 230CT07 | 230CT07 | 230CT07 | 230CT07 | 230CT07 |
| DRW | MARTIN LI | 230CT07 | 230CT07 | 230CT07 | 230CT07 | 230CT07 | 230CT07 | 230CT07 |
| PROD | STEVEN YAO | 230CT07 | 230CT07 | 230CT07 | 230CT07 | 230CT07 | 230CT07 | 230CT07 |
| APPL | 108-60034 | 108-60034 | 108-60034 | 108-60034 | 108-60034 | 108-60034 | 108-60034 | 108-60034 |
| WEIGHT | | | | | | | | |
| CUSTOMER DRAWING | | | | | | | | |

| | | |
|---------------------------|------------------------------|------------------------|
| RECEPTACLE ASSEMBLY RIGHT | ANGLE, 4 POSITION, T/H & SMT | USB, LEAD FREE VERSION |
| SIZE | A2 | 00779 |
| SCALE | 5:1 | 292303 |
| SHEET | 3 | 4 |
| REV | D1 | |



RECOMMENDED MOUNTING PANEL CUTOUT

- ▲ MATERIAL:
SHELL & CONTACTS- COPPER ALLOY.
HOUSING: UL 94V-0 RATED, THERMOPLASTIC, COLOR SEE TABLE.
- ▲ PLATING:
CONTACTS: 0.076 μm MINIMUM GOLD OVER 0.76 μm MINIMUM
PALLADIUM-NICKEL ON MATING AREA.
3.8 μm MINIMUM MATTE TIN ON SOLDER TAILS.
BOTH OVER 1.27 μm MINIMUM NICKEL.
CONTACT ALTERNATE PLATING: 0.76 μm MIN GOLD ON MATING
AREA, 3.80 μm MIN MATTE TIN ON SOLDER TAILS, BOTH
OVER 1.27 μm MIN NICKEL.
SHELL: 2~5 μm MINIMUM BRIGHT TIN
- ▲ PANEL IS NEEDED FOR CUSTOMER.



RECOMMENDED PC BOARD MOUNTING LAYOUT (TOLERANCE=±0.05)

THIS PART IS ONLY RESTRICT TO HP

| | | |
|-----------------------------|---------------|-------------|
| YES | NATURAL | 292303-9 |
| HIGH TEMPERATURE COMPATIBLE | HOUSING COLOR | PART NUMBER |

| | | | | |
|---|--|---|---|--|
| DIMENSIONS: mm TOLERANCES UNLESS OTHERWISE SPECIFIED: 0 PLC ±. 1 PLC ±0.25 2 PLC ±. 4 PLC ±. ANGLES ±. FINISH ±. | | DMN 197EB04 CHK S. YAO 197EB04 APD T SASAKI 197EB04 PRODUCT SPEC 108-60034 APPLICATION SPEC WEIGHT CUSTOMER DRAWING | Teco Electronics Corporation Shanghai, P.R.China, 200233 | RECEPTACLE ASSEMBLY RIGHT ANGLE, 4 POSITION, T/H & SMT USB, LEAD FREE VERSION SIZE A2 QAGE CODE 00779 DRAWING NO. 292303 SCALE 5:1 SHEET 4 OF 4 REV D1 |
|---|--|---|---|--|