

注記 NOTES

1. 使用材料 MATERIAL

ハウジング : 液晶ポリマー ( LCP ) UL94V-0 ( 黒 )  
 HOUSING: LIQUID CRYSTAL POLYMER UL94V-0 ( COLOR: BLACK )  
 ターミナル : 銅合金  
 TERMINAL : COPPER ALLOY  
 金具 : 銅合金  
 FITTING NAIL : COPPER ALLOY

2. メッキ仕様 PLATING

ターミナル TERMINAL

金メッキ  
 GOLD

下地メッキ : ニッケルメッキ  
 UNDER PLATING : NICKEL

※コンタクト部とテール部の基板接触面には金メッキを施してあります。

それ以外の箇所は金メッキもしくはニッケルメッキが露出し、  
 外観上 色調が異なる場合がありますが、性能には影響ありません。

但し、コンタクト部とテール部の間にはニッケルメッキで金メッキを分断している箇所があります。

CONTACT AREA : GOLD PLATING

SOLDER TAIL AREA ( PWB CONTACT SURFACE SIDE ONLY ) : GOLD PLATING

OTHER AREAS : GOLD PLATING OR NICKEL PLATING

NICKEL PLATING DIVIDES BETWEEN THE CONTACT AREA ( GOLD PLATING )  
 AND SOLDER TAIL AREA ( GOLD PLATING ).

金具 FITTING NAIL

金メッキ ( テール部のみ )  
 GOLD ( ONLY TAIL PART )

下地メッキ : ニッケルメッキ  
 UNDER PLATING : NICKEL

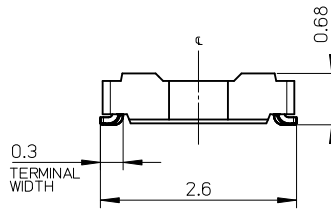
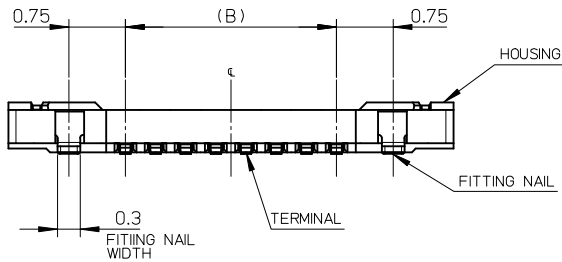
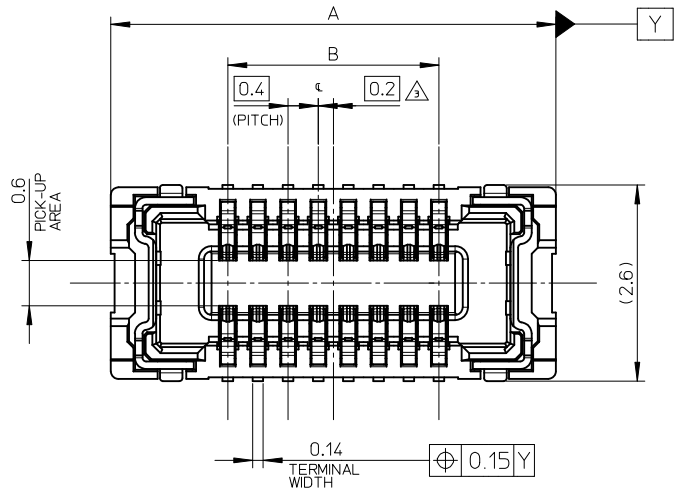
△ ( 全極数 / 2 ) = 偶数の場合に適用。  
 APPLY FOR ( CIRCUIT / 2 ) = EVEN.

4. 嵌合相手 : 503552 シリーズ  
 MATE WITH : 503552 SERIES.

5. テール平坦度は、0.08 以下

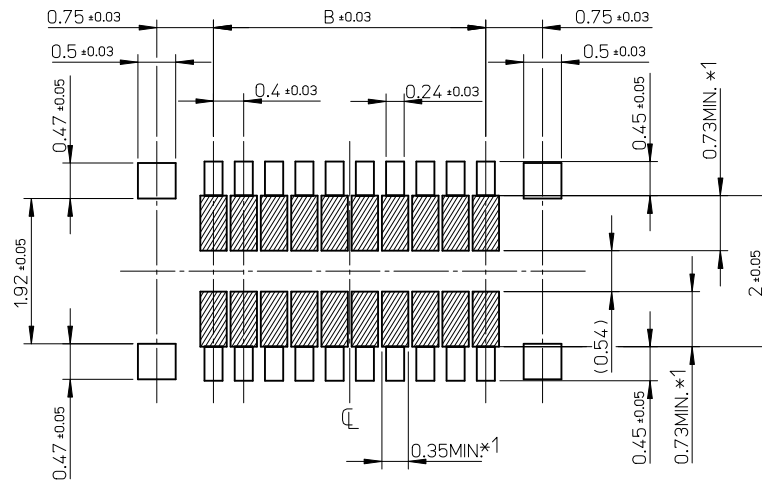
テール及び金具の平坦度は、0.1 以下  
 TAIL COPLANARITY TO BE 0.08 MAXIMUM.  
 TAIL AND FITTING NAIL COPLANARITY TO BE 0.1 MAXIMUM.

6. ELV and RoHS COMPLIANT.



3.2	6.3	503548-1820	18
2.8	5.9	503548-1620	16
2.4	5.5	503548-1420	14
2.0	5.1	503548-1220	12
0.8	3.9	503548-0620	6
B	A	EMBOSSED PACKAGE	
		極数	CIRCUITS
オーダー番号 ORDER No.			
CONNECTOR SERIES No. : 503548-***19			

RELEASED EC NO: J2011-0380 DRWN: NAITO 2010/09/10 CHKD: RTAKEUCHI 2010/09/10 APPR: MSASAO	GENERAL TOLERANCES (UNLESS SPECIFIED)		DIMENSION STYLE	SCALE	DESIGN UNITS	THIRD ANGLE PROJECTION
			MM ONLY	15:1	METRIC	
	10 UNDER	±0.2	DRAWN BY	DATE	TITLE	
	10 OVER 30 UNDER	±0.25	RTAKEUCHI	2010/05/17	0.4 B-TO-B CONN. HGT=0.7 W=2.6 HI-RETENTION REC ASSY	
	30 OVER	±0.3	CHECKED BY	DATE		
ANGULAR ±1 °		T. HIRATA	2010/05/17	MOLEX INCORPORATED		
DRAFT WHERE APPLICABLE MUST REMAIN WITHIN DIMENSIONS		APPROVED BY	DATE	DOCUMENT NO.	SHEET NO.	
		MSASAO	2010/09/15	SEE CHART	SD-503548-005	1 OF 2
		MATERIAL NO.	THIS DRAWING CONTAINS INFORMATION THAT IS PROPRIETARY TO MOLEX INCORPORATED AND SHOULD NOT BE USED WITHOUT WRITTEN PERMISSION			
		SIZE	A3			



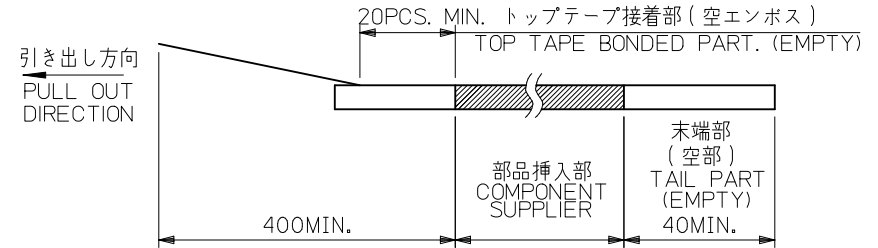
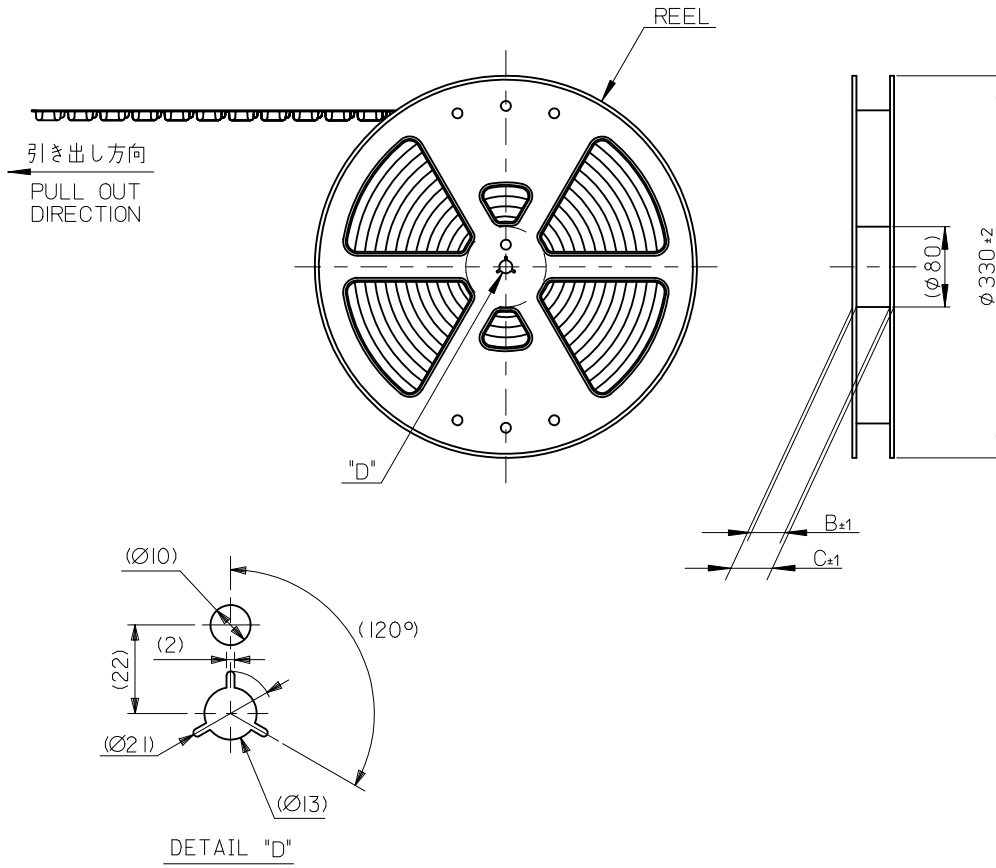
RECOMMENDED P.W. BOARD PATTERN LAYOUT

- \*1 パターン引き回し、および半田禁止エリア  
(当該箇所においては、これと接する回路以外の配線を禁止する。  
また、接する回路を配線する場合はレジストを施し、この部分に半田は無きこととする。)
- \*1 PROHIBITED AREA OF PATTERN WIRING AND SOLDER.  
(FOR EACH AREA, THE WIRING THAT TOUCHES ON THE SOLDER CAN BE ATTACHED, THEN COVERED WITH A FILM TO KEEP SOLDER OUT.)

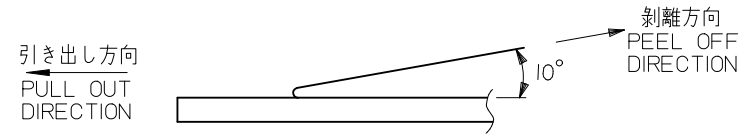
RELEASED EC NO: 2010/09/10 DRWN: NAITO 2010/09/10 CHKD: RTAKEUCHI APPR: MSASAO	GENERAL TOLERANCES (UNLESS SPECIFIED)		DIMENSION STYLE MM ONLY		SCALE 15:1	DESIGN UNITS METRIC	THIRD ANGLE PROJECTION	
	10 UNDER	± 0.2	DRAWN BY RTAKEUCHI	DATE 2010/05/17	TITLE 0.4 B-TO-B CONN. HGT=0.7 W=2.6 HI-RETENTION REC ASSY			
	10 OVER 30 UNDER	± 0.25	CHECKED BY T. HIRATA	DATE 2010/05/17				
	30 OVER	± 0.3	APPROVED BY MSASAO	DATE 2010/09/15	MOLEX INCORPORATED DOCUMENT NO. SD-503548-005 SHEET NO. 2 OF 2			
ANGULAR ± 1 °		MATERIAL NO. SEE CHART						
DRAFT WHERE APPLICABLE MUST REMAIN WITHIN DIMENSIONS		THIS DRAWING CONTAINS INFORMATION THAT IS PROPRIETARY TO MOLEX INCORPORATED AND SHOULD NOT BE USED WITHOUT WRITTEN PERMISSION						

注記 NOTES

- 製品詳細寸法については製品単体図面を参照下さい。  
RE DETAILED DIMENSION, SEE PRODUCT DRAWING.
- 梱包数量: 3000 個/リール  
NUMBER OF CONNECTORS: 3000PCS/REEL
- リードテープ長さ LEAD TAPE LENGTH

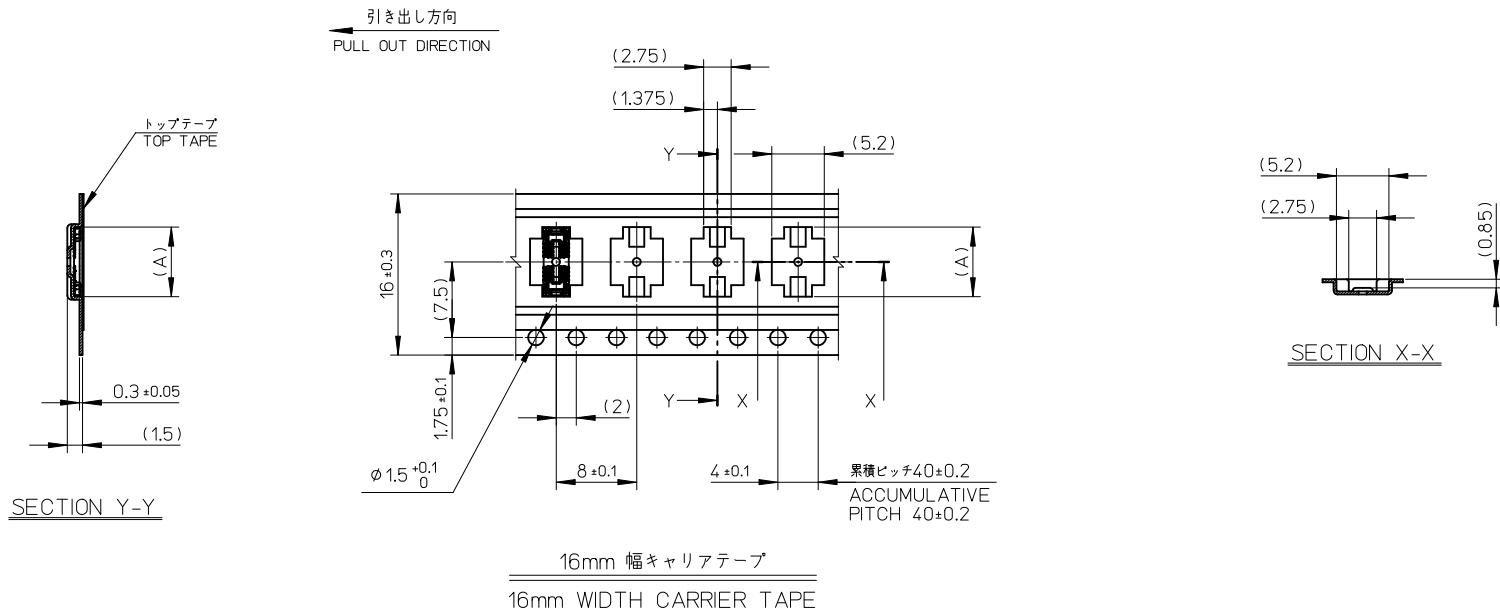


- トップテープの剥離強度: 0.1N~1.3N(10gf~130gf)  
(剥離方向は下図参照)  
尚、本規格値は出荷時に適用。(但し、輸送時に剥離が発生しないこと。)  
PEELING OFF FORCE OF TOP TAPE: 0.1N~1.3N(10gf~130gf)  
(PEELING DIRECTION AS SHOWN IN FOLLOWING FIG.)  
THIS REQUIREMENT SHOULD BE APPLIED AT SHIPMENT.  
PEEL OFF SHOULD NOT BE ALLOWED, DURING TRANSPORTION.



- 材料 MATERIAL  
キャリアテープ (CARRIER TAPE): ポリスチレン (POLYSTYRENE)  
トップテープ (TOP TAPE): PET, OTHER  
リール (REEL): ポリスチレン (PS) <リサイクル材を含む>  
POLYSTYRENE (PS) <RECYCLE MATERIAL CONTAINED>
- ELV 及び RoHS適合品  
ELV AND RoHS COMPLIANT

RELEASED EC NO: J2010-2492 DRWN: TSUZUKI01 2010/06/10 CHKD: THIRATA 2010/06/14 APPR: MSASAO 2010/06/15	DESCRIPTION REV	GENERAL TOLERANCES (UNLESS SPECIFIED)		DIMENSION STYLE MM ONLY		SCALE	DESIGN UNITS METRIC	MODEL NO. 503548-**20	THIRD ANGLE PROJECTION
		10 UNDER	±---	DRAWN BY RTAKEUCHI	DATE 2010/02/08	TITLE 0.4 B-TO-B CONN. HGT=0.7 HI-RETENTION REC ASSY EMBSTP PKG			
		10 OVER 30 UNDER	±---	CHECKED BY THIRATA	DATE 2010/02/08	MOLEX INCORPORATED			
		30 OVER	±---	APPROVED BY MSASAO	DATE 2010/02/08	DOCUMENT NO. SD-503548-006			
		ANGULAR	±---	MATERIAL NO. SEE CHART		SHEET NO. 1 OF 2		THIS DRAWING CONTAINS INFORMATION THAT IS PROPRIETARY TO MOLEX INCORPORATED AND SHOULD NOT BE USED WITHOUT WRITTEN PERMISSION	
DRAFT WHERE APPLICABLE MUST REMAIN WITHIN DIMENSIONS				SIZE A3					

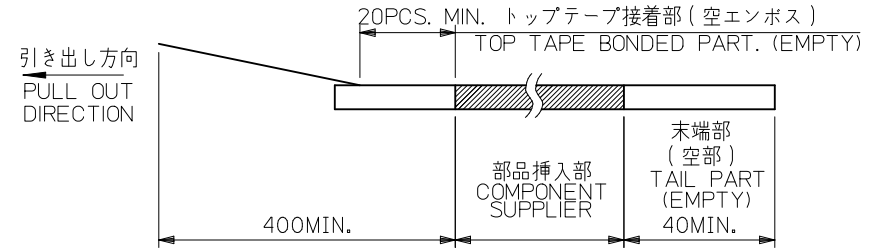
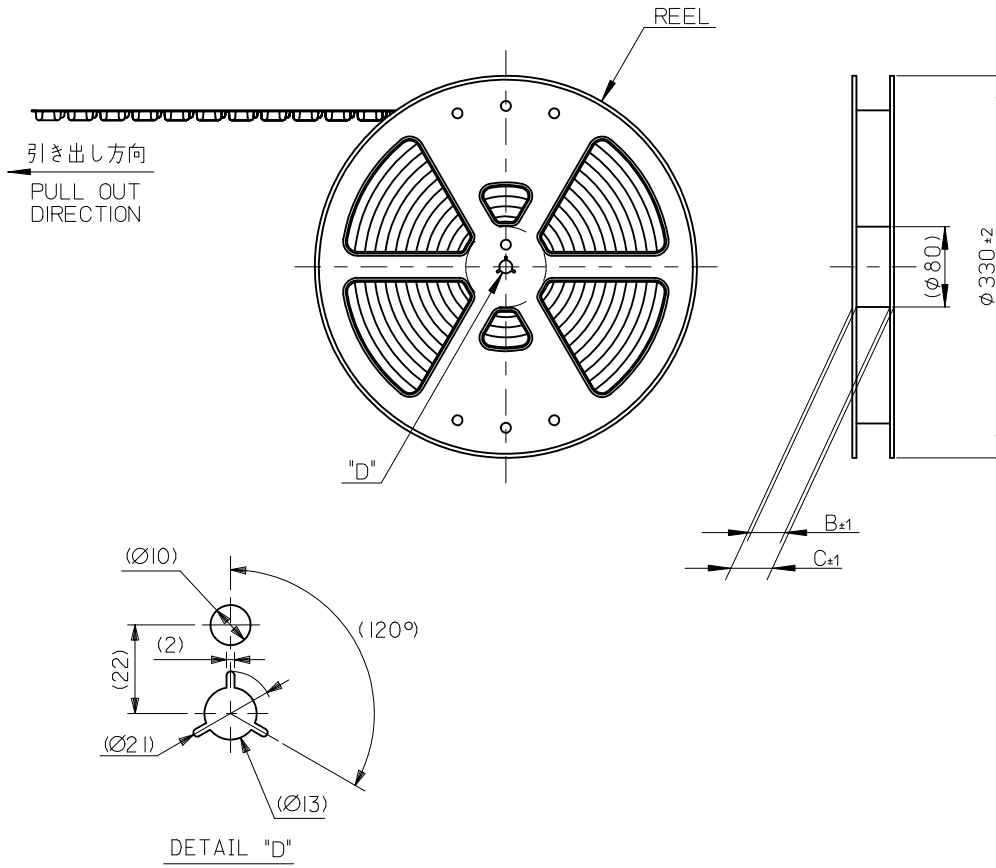


16	21.4	17.4	6.5	503548-1820	18
			6.1	503548-1620	16
			5.7	503548-1420	14
			5.3	503548-1220	12
			4.1	503548-0620	6
キャリアテープ幅 CARRIER TAPE WIDTH			C	B	(A)
			MATERIAL No.		CKT.
			MODEL No.		503548-**-20

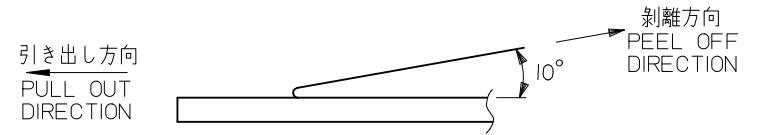
RELEASED EC NO: J2010-2492 DRWN: TSUZUKI 2010/06/10 CHKD: THIRATA 2010/06/14 APPR: MSASAO 2010/06/15	GENERAL TOLERANCES (UNLESS SPECIFIED)	DIMENSION STYLE MM ONLY	SCALE	DESIGN UNITS METRIC	THIRD ANGLE PROJECTION
	10 UNDER ±---	DRAWN BY RTAKEUCHI	DATE 2010/02/08	TITLE 0.4 B-TO-B CONN. HGT=0.7 HI-RETENTION REC ASSY EMBSTP PKG	
	10 OVER 30 UNDER ±---	CHECKED BY THIRATA	DATE 2010/02/08	MOLEX INCORPORATED	
	30 OVER ±---	APPROVED BY MSASAO	DATE 2010/02/08	DOCUMENT NO. SD-503548-006	
	ANGULAR ±--- °	MATERIAL NO.	SEE CHART	SHEET NO. 2 OF 2	
DRAFT WHERE APPLICABLE MUST REMAIN WITHIN DIMENSIONS	THIS DRAWING CONTAINS INFORMATION THAT IS PROPRIETARY TO MOLEX INCORPORATED AND SHOULD NOT BE USED WITHOUT WRITTEN PERMISSION				

注記 NOTES

- 製品詳細寸法については製品単体図面を参照下さい。  
RE DETAILED DIMENSION, SEE PRODUCT DRAWING.
- 梱包数量: 3000 個/リール  
NUMBER OF CONNECTORS: 3000PCS/REEL
- リードテープ長さ LEAD TAPE LENGTH

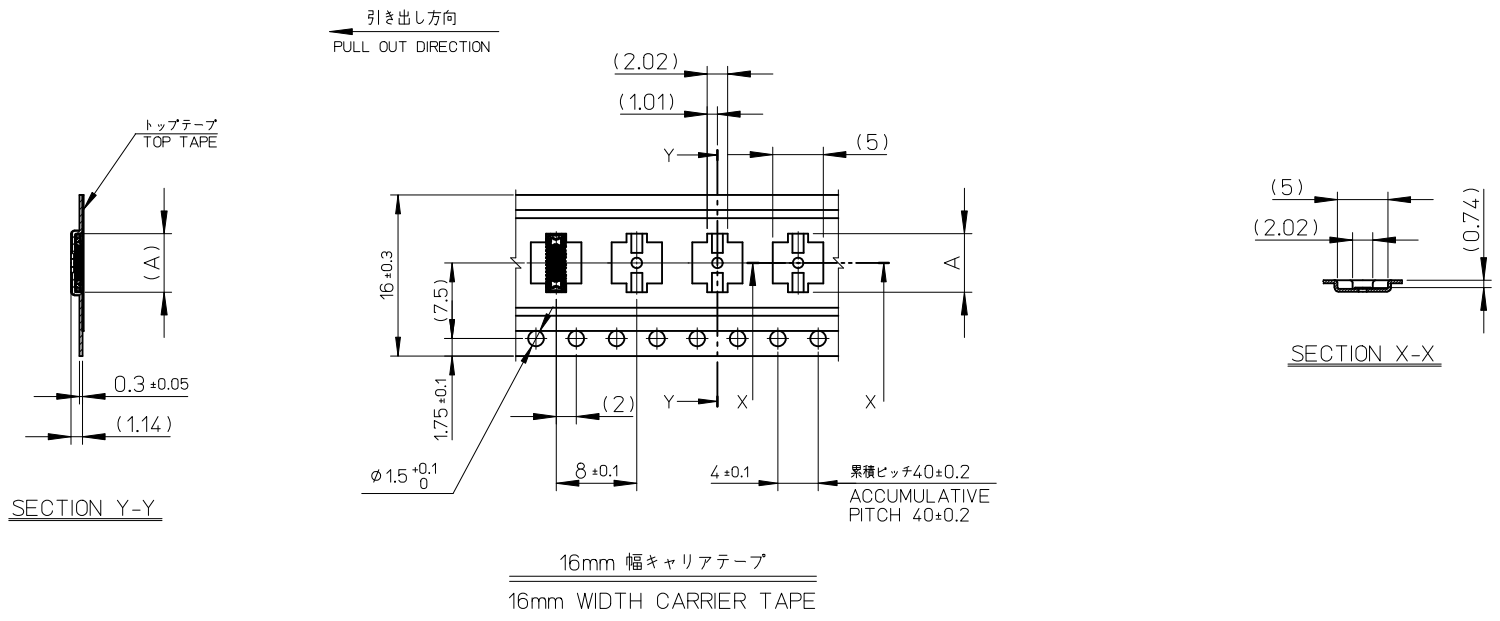


- トップテープの剥離強度: 0.1N~1.3N(10gf~130gf)  
(剥離方向は下図参照)  
尚、本規格値は出荷時に適用。(但し、輸送時に剥離が発生しないこと。)  
PEELING OFF FORCE OF TOP TAPE: 0.1N~1.3N(10gf~130gf)  
(PEELING DIRECTION AS SHOWN IN FOLLOWING FIG.)  
THIS REQUIREMENT SHOULD BE APPLIED AT SHIPMENT.  
PEEL OFF SHOULD NOT BE ALLOWED, DURING TRANSPORTION.



- 材料 MATERIAL  
キャリアテープ (CARRIER TAPE): ポリスチレン (POLYSTYRENE)  
トップテープ (TOP TAPE): PET, OTHER  
リール (REEL): ポリスチレン (PS) <リサイクル材を含む>  
POLYSTYRENE (PS) <RECYCLE MATERIAL CONTAINED>
- ELV 及び RoHS適合品  
ELV AND RoHS COMPLIANT

RELEASED EC NO: J2012-1336 DRWN: TTANIGUCHI 2012/04/17 CHKDR: RTAKEUCHI 2012/05/16 APPR: MSASAO 2012/05/17	GENERAL TOLERANCES (UNLESS SPECIFIED)		DIMENSION STYLE	SCALE	DESIGN UNITS	MODEL NO.	504008-**-10
			MM ONLY	1:1	METRIC	THIRD ANGLE PROJECTION	
	10 UNDER	±---	DRAWN BY	DATE	TITLE		
	10 OVER 30 UNDER	±---	TTANIGUCHI	2012/04/17	0.35 B-TO-B CONN HGT=0.7 REC. ASSY EMBSTP PKG 035ST7		
30 OVER	±---	CHECKED BY	DATE	molex			SHEET NO. 1 OF 2
ANGULAR ±1	±---	RTAKEUCHI	2012/05/16				
DRAFT WHERE APPLICABLE MUST REMAIN WITHIN DIMENSIONS		APPROVED BY	DATE	MATERIAL NO.	DOCUMENT NO.		
		SEE CHART		SD-504008-002			
		THIS DRAWING CONTAINS INFORMATION THAT IS PROPRIETARY TO MOLEX INCORPORATED AND SHOULD NOT BE USED WITHOUT WRITTEN PERMISSION					

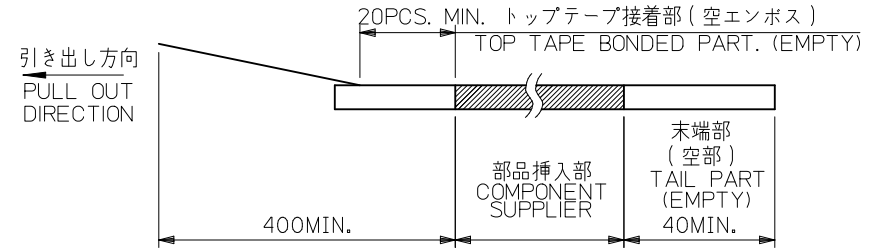


16	21.4	17.4	4.07	504008-1010	10
キャリアテープ幅 CARRIER TAPE WIDTH	C	B	(A)	MATERIAL No.	CKT.
				MODEL No.	504008-**10

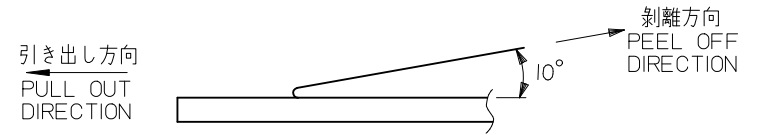
RELEASED EC NO: J2012-1336 DRWN: ITANIGUCHI 2012/04/17 CHKD: RTAKEUCHI 2012/05/16 APPR: MSASAO 2012/05/17	GENERAL TOLERANCES (UNLESS SPECIFIED)		DIMENSION STYLE MM ONLY		SCALE 1:1	DESIGN UNITS METRIC	THIRD ANGLE PROJECTION
	10 UNDER	± ---	DRAWN BY TTANIGUCHI	DATE 2012/04/17	TITLE 0.35 B-TO-B CONN HGT=0.7 REC. ASSY EMBSTP PKG 035ST7		
	10 OVER 30 UNDER	± ---	CHECKED BY RTAKEUCHI	DATE 2012/05/16			
	30 OVER	± ---	APPROVED BY	DATE			
ANGULAR ±1 °		MATERIAL NO.	SEE CHART		DOCUMENT NO.	SD-504008-002	
DRAFT WHERE APPLICABLE MUST REMAIN WITHIN DIMENSIONS		SIZE A3	THIS DRAWING CONTAINS INFORMATION THAT IS PROPRIETARY TO MOLEX INCORPORATED AND SHOULD NOT BE USED WITHOUT WRITTEN PERMISSION				

注記 NOTES

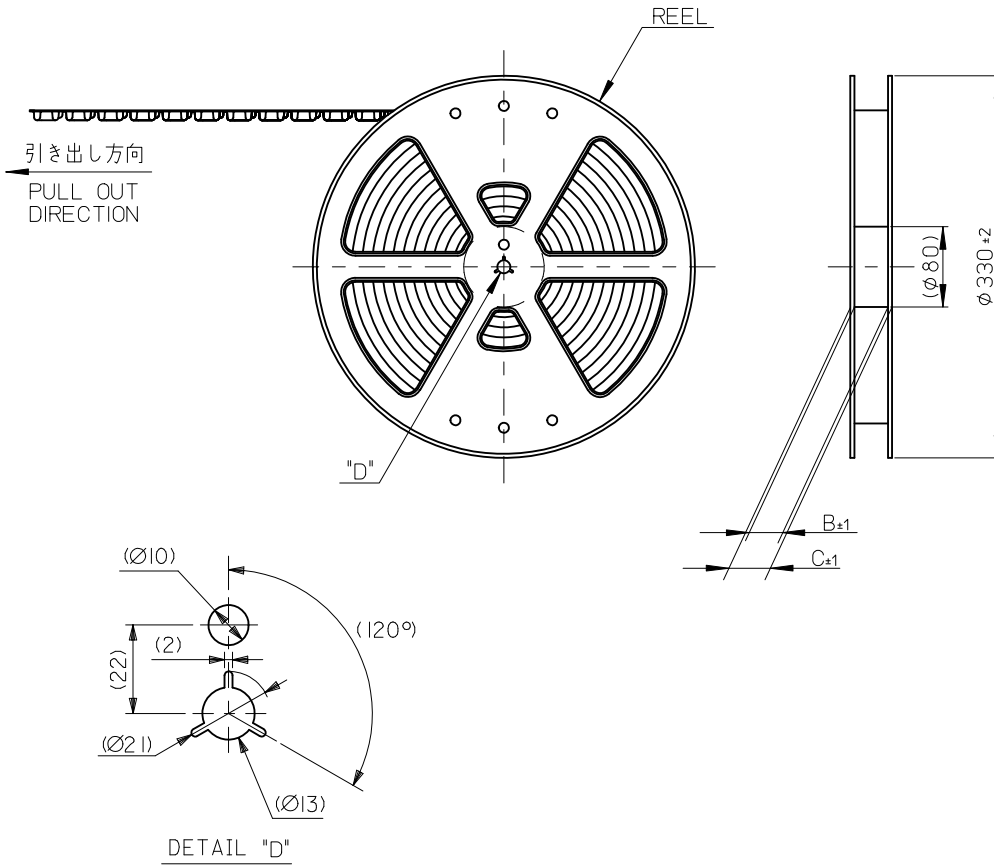
- 製品詳細寸法については製品単体図面を参照下さい。  
RE DETAILED DIMENSION, SEE PRODUCT DRAWING.
- 梱包数量：3000 個/リール  
NUMBER OF CONNECTORS : 3000PCS/REEL
- リードテープ長さ LEAD TAPE LENGTH



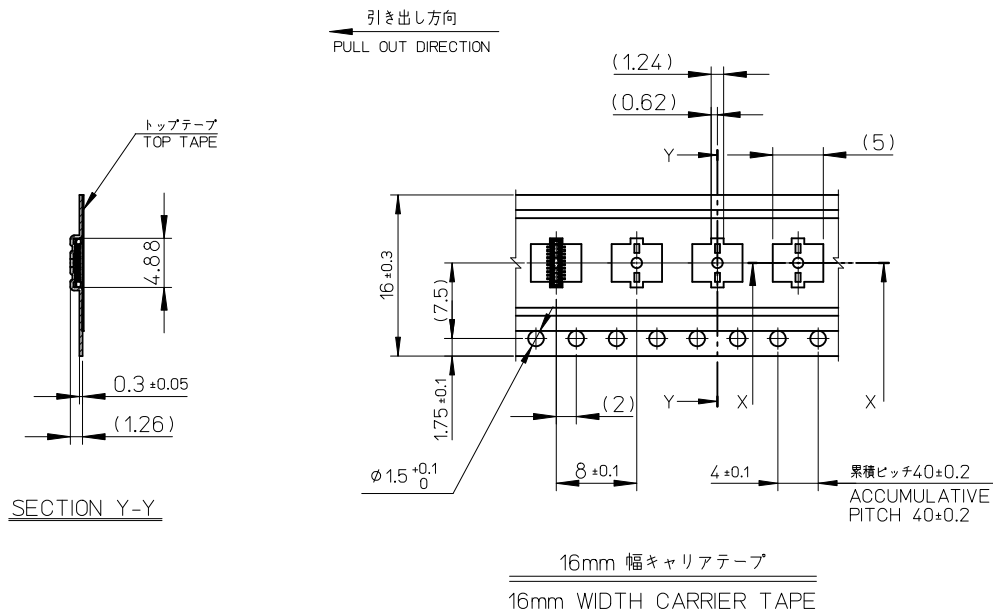
- トップテープの剥離強度：0.1N~1.3N(10gf~130gf)  
(剥離方向は下図参照)  
尚、本規格値は出荷時に適用。(但し、輸送時に剥離が発生しないこと。)  
PEELING OFF FORCE OF TOP TAPE : 0.1N~1.3N(10gf~130gf)  
(PEELING DIRECTION AS SHOWN IN FOLLOWING FIG.)  
THIS REQUIREMENT SHOULD BE APPLIED AT SHIPMENT.  
PEEL OFF SHOULD NOT BE ALLOWED , DURING TRANSPORTION.



- 材料 MATERIAL  
キャリアテープ (CARRIER TAPE) : ポリスチレン (POLYSTYRENE)  
トップテープ (TOP TAPE) : PET , OTHER  
リール (REEL) : ポリスチレン (PS) <リサイクル材を含む>  
POLYSTYRENE (PS) <RECYCLE MATERIAL CONTAINED>
- ELV 及び RoHS適合品  
ELV AND RoHS COMPLIANT



RELEASED EC NO: J2012-1336 DRWN: TTANIGUCHI 2012/04/17 CHKD: RTAKEUCHI 2012/05/16 APPR: MSASAO 2012/05/17	GENERAL TOLERANCES (UNLESS SPECIFIED)		DIMENSION STYLE MM ONLY		SCALE 1:1	DESIGN UNITS METRIC	MODEL NO. 504011-xx10
	10 UNDER	± ---	DRAWN BY TTANIGUCHI	DATE 2012/04/17	TITLE 0.35 B-T0-B CONN HGT=0.7 PLUG ASSY EMBSTP PKG 035ST7		
	10 OVER 30 UNDER	± ---	CHECKED BY RTAKEUCHI	DATE 2012/05/16			
	30 OVER	± ---	APPROVED BY	DATE			
ANGULAR ±1	°	MATERIAL NO. SEE CHART		DOCUMENT NO. SD-504011-002	SHEET NO. 1 OF 2		
DRAFT WHERE APPLICABLE MUST REMAIN WITHIN DIMENSIONS		SIZE A3	THIS DRAWING CONTAINS INFORMATION THAT IS PROPRIETARY TO MOLEX INCORPORATED AND SHOULD NOT BE USED WITHOUT WRITTEN PERMISSION				



16	21.4	17.4	3.13	504011-1010	10
キャリアテープ幅 CARRIER TAPE WIDTH			C	B	(A)
				MATERIAL No.	504011-1010
				MODEL No.	504011-**10

RELEASED EC NO: J2012-1336 DRWN: ITANIGUCHI 2012/04/17 CHKD: RTAKEUCHI 2012/05/16 APPR: MSASAO 2012/05/17	GENERAL TOLERANCES (UNLESS SPECIFIED)		DIMENSION STYLE MM ONLY		SCALE 2:1	DESIGN UNITS METRIC	THIRD ANGLE PROJECTION
	10 UNDER	± ---	DRAWN BY TTANIGUCHI		DATE 2012/04/17		TITLE 0.35 B-T0-B CONN HGT=0.7 PLUG ASSY EMBSTP PKG 035ST7
	10 OVER 30 UNDER	± ---	CHECKED BY RTAKEUCHI		DATE 2012/05/16		
	30 OVER	± ---	APPROVED BY		DATE		
ANGULAR ±1 °		MATERIAL NO. SEE CHART		DOCUMENT NO. SD-504011-002		SHEET NO. 2 OF 2	
DRAFT WHERE APPLICABLE MUST REMAIN WITHIN DIMENSIONS		THIS DRAWING CONTAINS INFORMATION THAT IS PROPRIETARY TO MOLEX INCORPORATED AND SHOULD NOT BE USED WITHOUT WRITTEN PERMISSION					