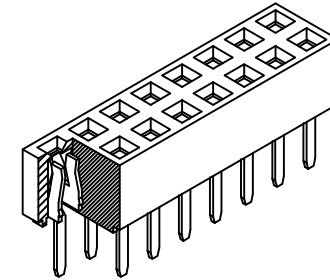
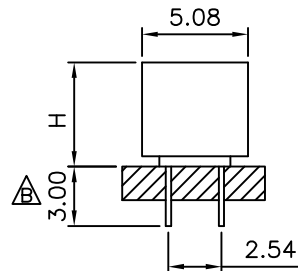
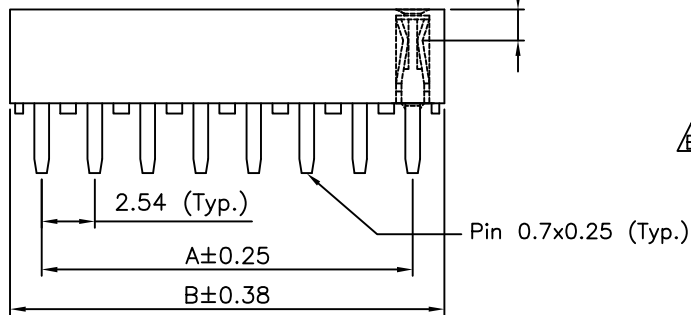


RECOMMENDED PCB LAYOUT

Height=5.00mm: Min. Insertion Depth = 1.49mm REF. M.I.D  
 Height=7.10mm: Min. Insertion Depth = 2.03mm REF.



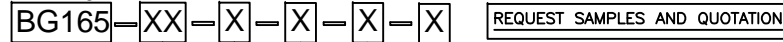
CONTACTS	DIMENSIONS	
	A	B
4	2.54	5.58
6	5.08	8.12
8	7.62	10.66
10	10.16	13.20
12	12.70	15.74
14	15.24	18.28
16	17.78	20.82
18	20.32	23.36
20	22.86	25.90
22	25.40	28.44
24	27.94	30.98
26	30.48	33.52
28	33.02	36.06
30	35.56	38.60
32	38.10	41.14
34	40.64	43.68
36	43.18	46.22
38	45.72	48.76
40	48.26	51.30
42	50.80	53.84
44	53.34	56.38
46	55.88	58.92
48	58.42	61.46
50	60.96	64.00
52	63.50	66.54
54	66.04	69.08
56	68.58	71.62
58	71.12	74.16
60	73.66	76.70
62	76.20	79.24
64	78.74	81.78
66	81.28	84.32
68	83.82	86.86
70	86.36	89.40
72	88.90	91.94
74	91.44	94.48
76	93.98	97.02
78	96.52	99.56
80	99.06	102.10

**SPECIFICATIONS 规格**

**CURRENT RATING 电流额定值:** 3 AMP  
**INSULATOR RESISTANCE 绝缘电阻值:** 1000 MEGOHMS MIN.  
**DIELECTRIC WITHSTANDING 耐电压:** AC 600 V  
**CONTACT RESISTANCE 接触电阻值:** 20mΩ Max.  
**OPERATING TEMPERATURE 工作温度:** -40°C TO +105°C  
**CONTACT MATERIAL 端子物料:** COPPER ALLOY  
**INSULATOR MATERIAL 绝缘体物料:**  
**STANDARD 标准物料:** POLYAMIDE 聚酰胺, NYLON 6T, UL 94-V0  
**OPTIONS 可选物料:** POLYESTER 聚酯, LCP, UL 94-V0  
**OR POLYESTER 聚酯, PBT, UL94-V0**  
**SOLDERING PROCESS 可焊性:**  
**NYLON 6T (STANDARD 标准物料) -**  
 IR REFLOW 回流焊: 260°C for 10 sec.  
 WAVE 波峰焊: 230°C for 5-10 sec.  
**MANUAL SOLDER 人工焊接: 350°C for 3-5 sec**  
**PBT (OPTION 可选物料) - MANUAL SOLDER 人工焊接: 330°C for 3-5 sec.**  
**(NOT SUITABLE FOR HI-TEMP PROCESS 不适合高温处理)**  
**LCP (OPTION 可选物料) -**  
 IR REFLOW 回流焊: 260°C for 10 sec.  $\Delta$   
 WAVE 波峰焊: 250°C for 5-10 sec.  
**MANUAL SOLDER 人工焊接: 350°C for 3-5 sec  $\Delta$**

**MATES WITH 配套之母座 (SUBJECT TO PIN LENGTH 在端子长度适合的条件下):**  
 BG025 BG040 BG045 BG050 BG065  
 BG070 BG085

**Ordering Grid**



No. of Contacts  
04 to 80

**Contact Plating**

A = Gold Flash All Over  
 B = Selective Gold Flash Contact Area/Tin On Tail  
 C = Tin All Over  
 G = 10μ" Gold Contact Area/Tin On Tail  
 I = 30μ" Gold Contact Area/Tin On Tail  
**Standard = Gold Flash All Over**

**Height H**

A = 5.0mm  
 B = 7.1mm  
**Standard = 5.00mm**

**Insulator Material  $\Delta$**

**N = Nylon 6T (Standard)**  
 P = PBT  
 L = LCP

**Packing Options  $\Delta$**

**D = Tube (Standard)**  
 E = Tube with Cap  
 F = Tube with Film  
 G = Plastic Box

By	LYH	PN	PN	CB	DR
DETAIL	DRAWING RELEASE	DIMENSION AMENDMENT	STANDARD INSULATOR MATERIAL CHANGED	PACKING OPTIONS CHANGED	CHANGE TO SOLDER TEMP. INFORMATION
REV DATE	A 30/10/06	B 09/03/09	C 12/03/09	D 27/04/09	E 05/08/09



Tolerances (Except as noted)		Part Number:-	Date:-
Dimensions in mm		BG165	30 OCT 06
X. ± 0.30	X. ± 5°	Description:- 2.54mm PITCH SOCKET, DUAL ROW, THROUGH-HOLE, VERTICAL	
X.X ± 0.20	X° ± 2°		
X.XX ± 0.15	XX° ± 1°		
X.XXX ± 0.10	XXX° ± 0.5°		
Third Angle Projection		© THIS DRAWING IS CONFIDENTIAL AND MUST NOT BE COPIED OR DISCLOSED WITHOUT WRITTEN CONSENT	

**Global Connector Technology**  
 www.globalconnectortechnology.com



Scale	Revision	Material	Drawn by	Sheet No.
NTS	E	See Note	LYH	E & OE 1/1