

LA100P Semiconductor Fuses

1000 VAC • Very Fast Acting • 15 – 1000 Amperes



Littelfuse LA100P semiconductor protection fuses are rated 1000V, extending the range of protection for UPS systems, AC and DC drives, reduced voltage motor starters and similar applications where lower I²t and superior reliability are needed. With ratings from 15-1000 amperes, a wide range of high voltage applications can be served.

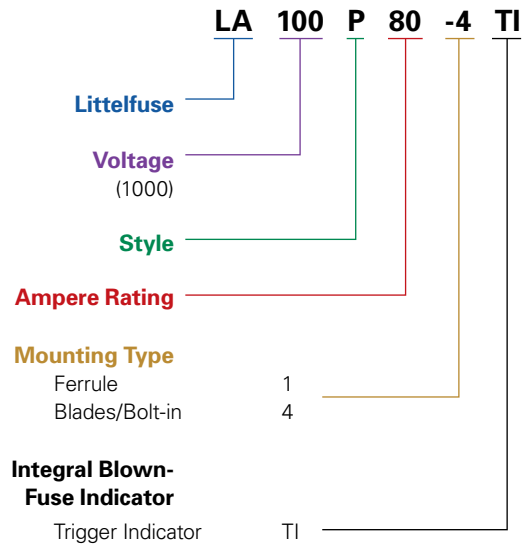
Features

- Low I²t minimizes damage to protected components on short-circuit.
- Controlled arc voltage reduces stress to circuit components during fuse clearing.

Applications

Protection of UPS systems, AC/DC drives, reduced voltage motor starters and other 1000V or less semiconductor devices.

Ordering Information



Note: Mounting types and integral blown fuse indicators are optional for specified ratings.

Specifications

- Voltage Rating:** AC: 1000 Volts
DC: 750 Volts
- Interrupting Rating:** 100,000 Amperes
- Ampere Range:** 15 – 1000 Amperes
- Approvals:** UL Recognized under the components program.

LA100P Semiconductor Fuses

1000 VAC • Very Fast Acting • 15 – 1000 Amperes

Catalog Numbers & Technical Data

Ampere Rating	Littelfuse Catalog Number	Mounting Type	Maximum Clearing I ² t @1000 VAC (A ² S x 10 ³)	Watts Loss @ Rated Current (W)
15	LA100P15-1	1	0.6	3.4
20	LA100P20-1	1	0.8	5.9
25	LA100P25-1	1	1.3	9
30	LA100P30-1	1	1.5	12.8
35	LA100P35-4	4	2.2	7.3
40	LA100P40-4	4	2.9	8.3
50	LA100P50-4	4	4.5	11
50	LA100P50-4TI	4TI	4.5	11
60	LA100P60-4	4	6.5	13
60	LA100P60-4TI	4TI	6.5	13
70	LA100P70-4TI	4TI	8.8	13
80	LA100P80-4	4	12	14
80	LA100P80-4TI	4TI	12	14
100	LA100P100-4	4	18	18
100	LA100P100-4TI	4TI	18	18
125	LA100P125-4	4	28	23
125	LA100P125-4TI	4TI	28	23
150	LA100P150-4	4	41	28
150	LA100P150-4TI	4TI	41	28

Ampere Rating	Littelfuse Catalog Number	Mounting Type	Maximum Clearing I ² t @1000 VAC (A ² S x 10 ³)	Watts Loss @ Rated Current (W)
200	LA100P200-4	4	72	36
200	LA100P200-4TI	4TI	72	36
225	LA100P225-4	4	91	40
250	LA100P250-4	4	110	46
300	LA100P300-4	4	160	55
300	LA100P300-4TI	4TI	160	55
350	LA100P350-4	4	220	65
350	LA100P350-4TI	4TI	220	65
400	LA100P400-4	4	290	70
400	LA100P400-4TI	4TI	290	70
500	LA100P500-4	4	450	90
500	LA100P500-4TI	4TI	450	90
600	LA100P600-4	4	650	110
600	LA100P600-4TI	4TI	650	110
650	LA100P650-4	4	780	120
700	LA100P700-4	4	880	125
800	LA100P800-4	4	1200	140
800	LA100P800-4TI	4TI	1200	140
1000	LA100P1000-4	4	1900	190

Figure 1

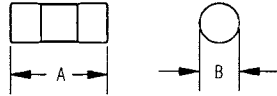


Figure 2

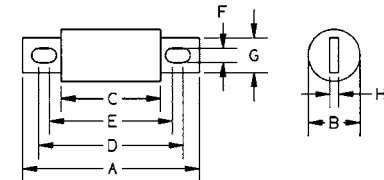


Figure 3

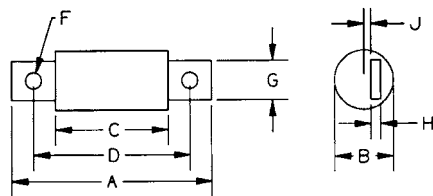
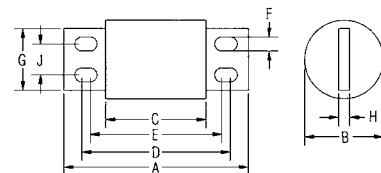


Figure 4



Dimensions

Dimensions for reference only.

Amperes	Mount. Type	Fig. No.	Dimensions in Inches (mm in parentheses)									
			A	B	C	D	E	F	G	H	J	
15 – 30	1	1	2.53 (66.8)	0.56 (14.2)	-	-	-	-	-	-	-	-
35 – 60	4, 4TI	2	5.00 (127)	1.00 (25.4)	3.50 (173)	4.31 (109)	4.19 (106)	0.31 (7.9)	0.75 (19.1)	0.13 (3.3)	-	-
65 – 100	4, 4TI	2	5.00 (127)	1.22 (31)	3.50 (173)	4.31 (109)	4.19 (106)	0.31 (7.9)	1.00 (25.4)	0.19 (4.8)	-	-
125 – 200	4, 4TI	2	5.72 (145)	2.00 (50.8)	3.47 (88.1)	4.78 (121)	4.16 (106)	0.41 (10.4)	1.00 (25.4)	0.25 (6.4)	-	-
225 – 400	4, 4TI	2	5.72 (145)	2.00 (50.8)	3.47 (88.1)	4.78 (121)	4.16 (106)	0.41 (10.4)	1.50 (38.1)	0.25 (6.4)	-	-
500 – 600	4, 4TI	2	7.72 (196)	2.50 (63.5)	3.47 (88.1)	5.88 (149)	5.56 (142)	0.53 (13.5)	2.00 (50.8)	0.38 (9.7)	-	-
650 – 800	4, 4TI	3	7.44 (189)	2.88 (73.2)	3.94 (100)	5.94 (151)	-	0.63 (16)	2.00 (50.8)	0.38 (9.7)	0.31 (7.9)	-
1000	4	4	8.22 (209)	3.50 (88.9)	4.47 (114)	6.59 (167)	5.84 (148)	0.63 (16)	2.75 (69.9)	0.50 (12.7)	1.38 (35.1)	-

Contact Littelfuse for characteristic curves.

Special Purpose Fuses